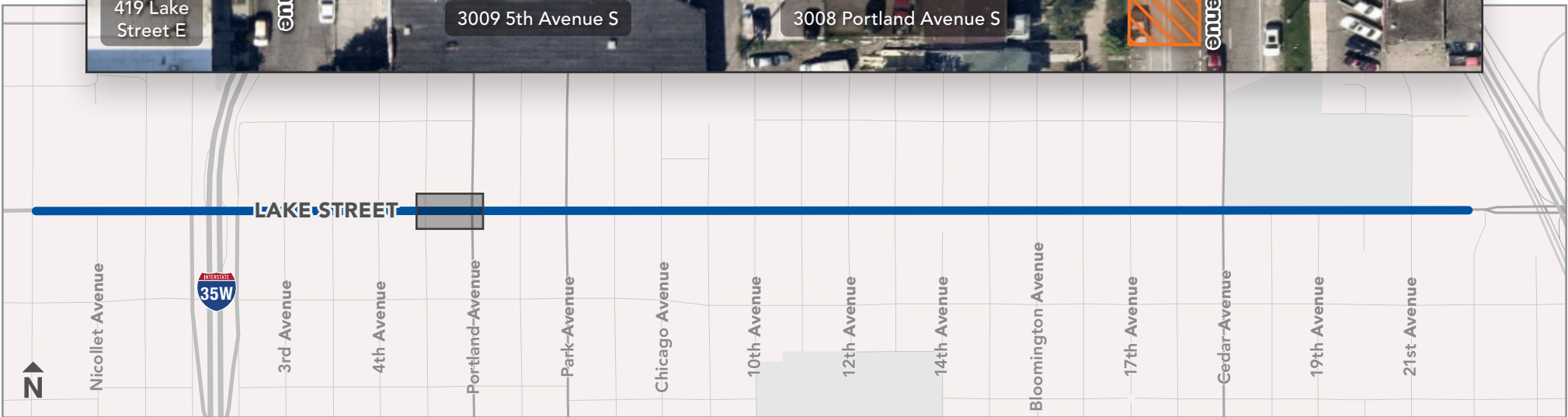


5th Avenue to Portland Avenue: Stage 1

🚧 South lanes and parking closed | Sidewalk and driveways open 🚧

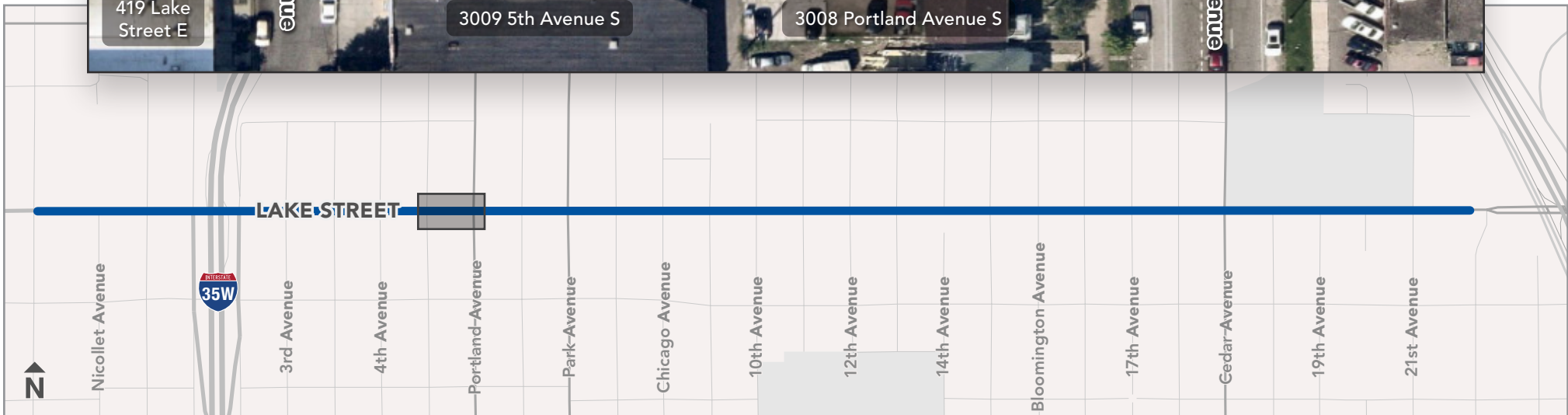
Legend:  Road Closure |  Direction of Traffic |  Existing Station Platform |  Station Platform to be Constructed



5th Avenue to Portland Avenue: Stage 2

🚧 North lanes and parking closed | Sidewalk and driveways open 🚧

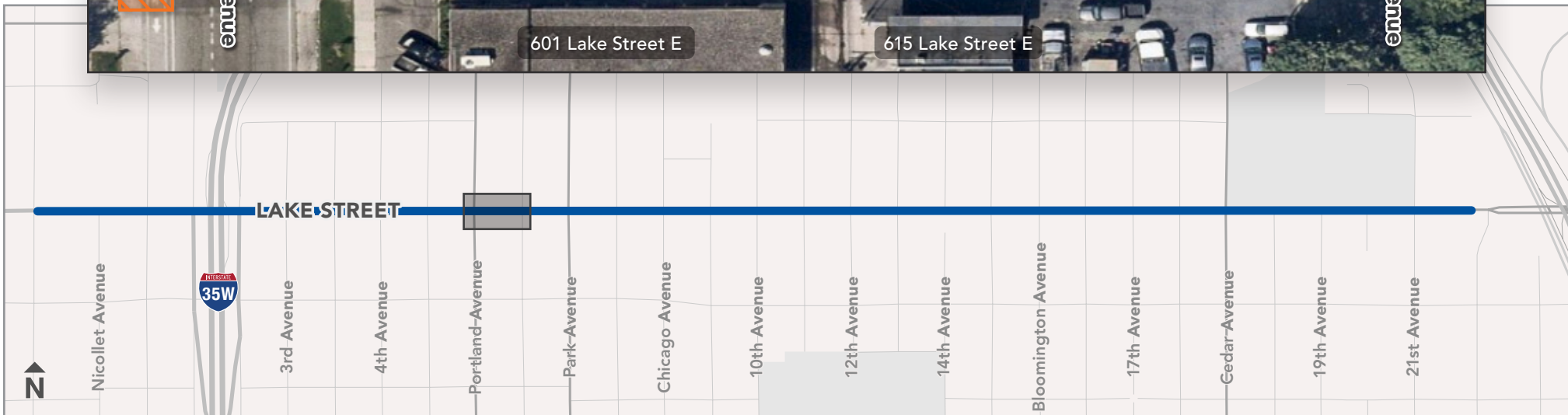
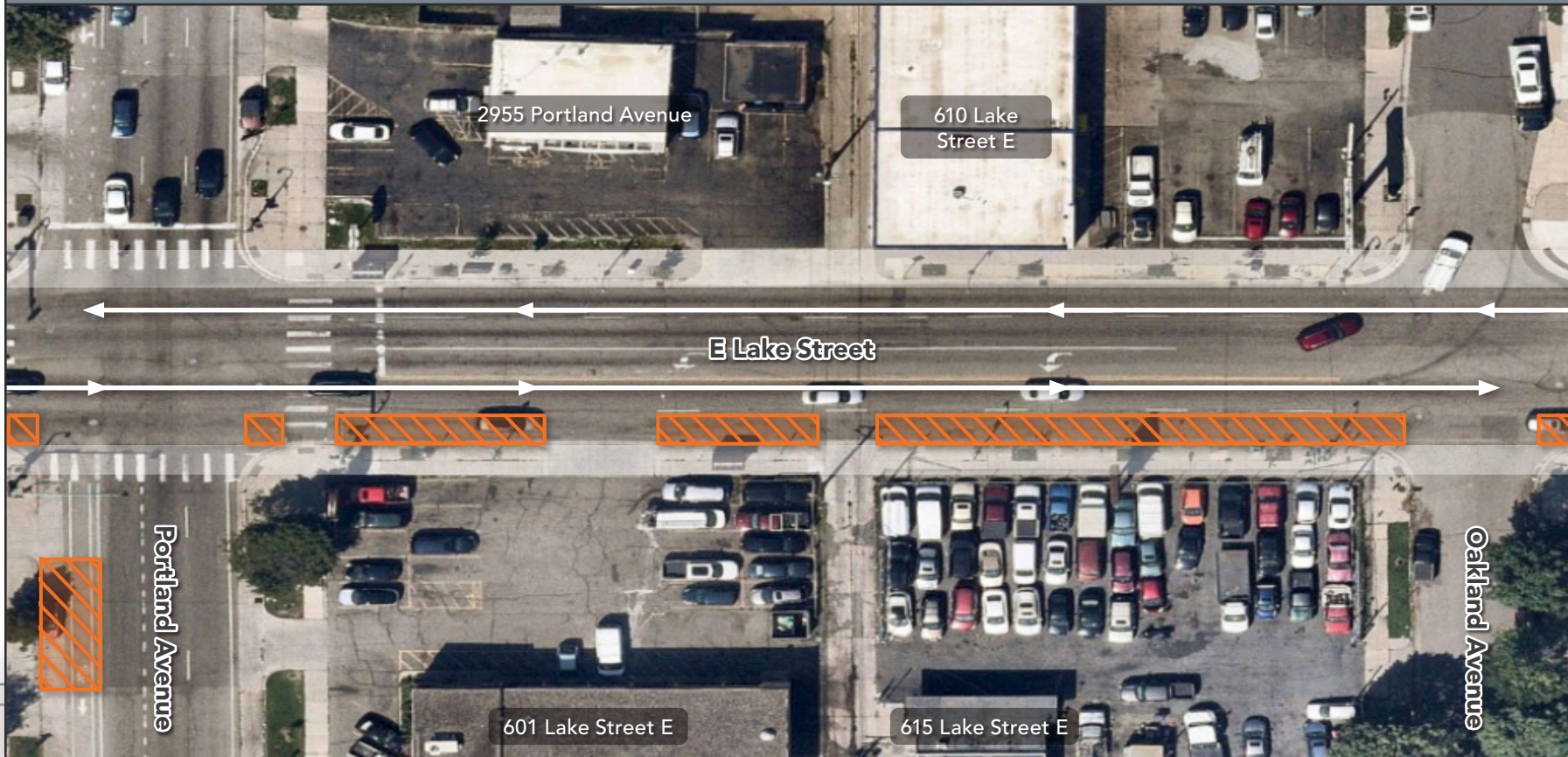
Legend: Road Closure Direction of Traffic Existing Station Platform Station Platform to be Constructed



Portland Avenue to Oakland Avenue: Stage 1

🚧 South lanes and parking closed | Sidewalk and driveways open 🚧

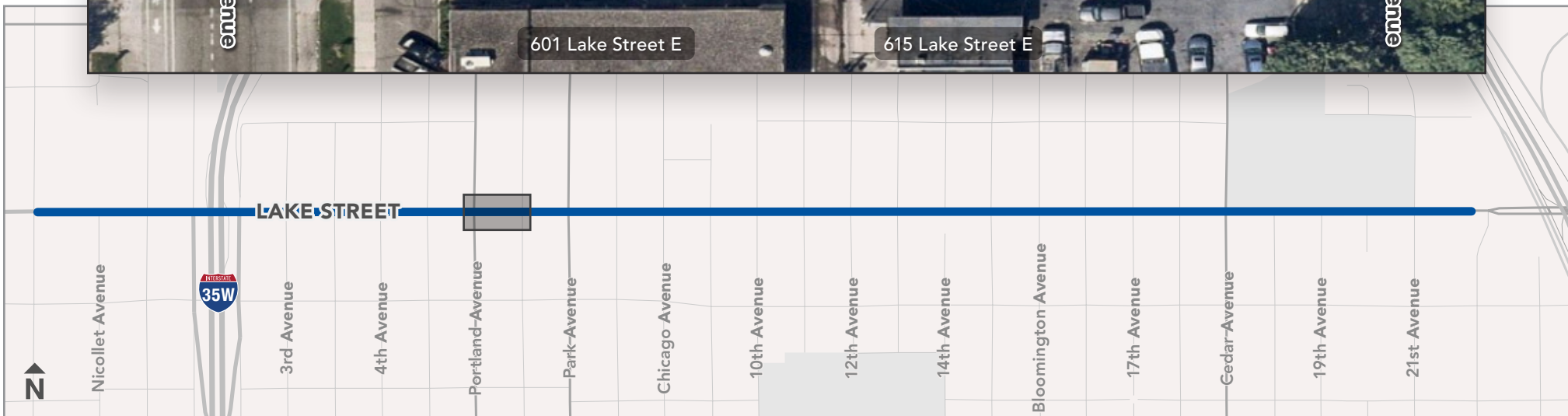
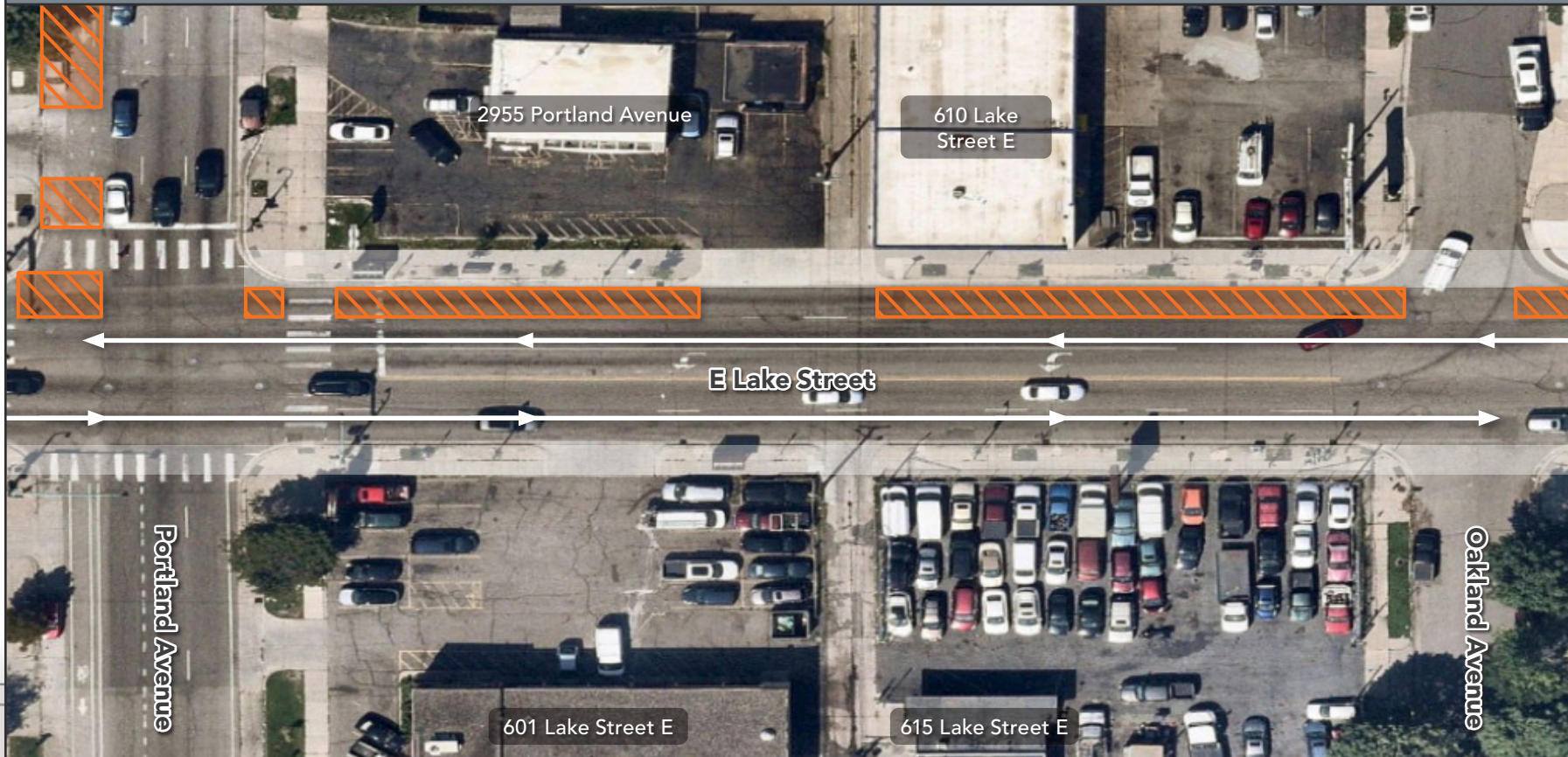
Legend:  Road Closure  Direction of Traffic  Existing Station Platform  Station Platform to be Constructed



Portland Avenue to Oakland Avenue: Stage 2

🚧 North lanes and parking closed | Sidewalk and driveways open 🚧

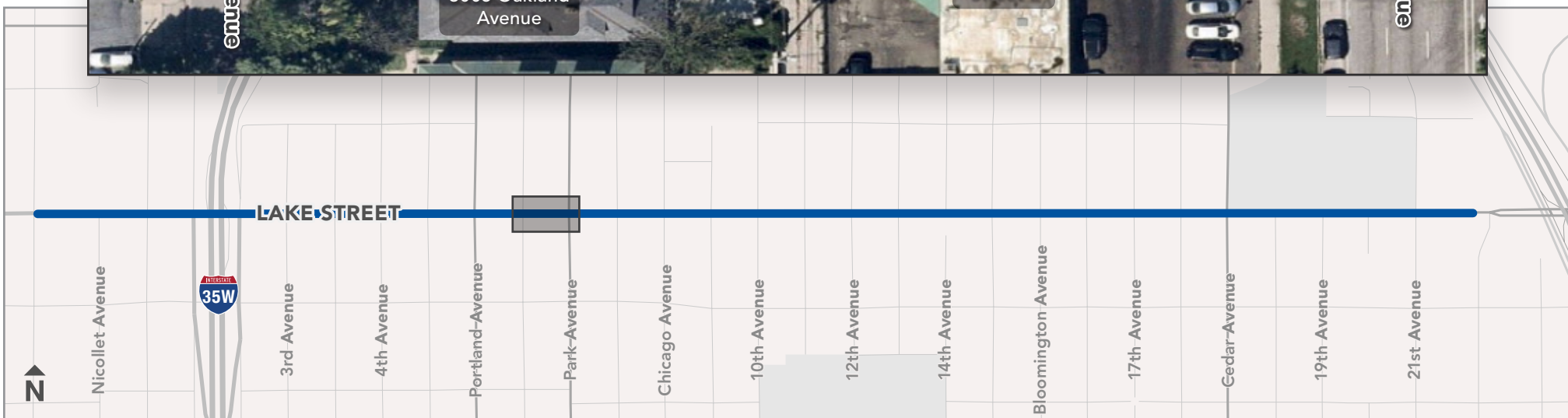
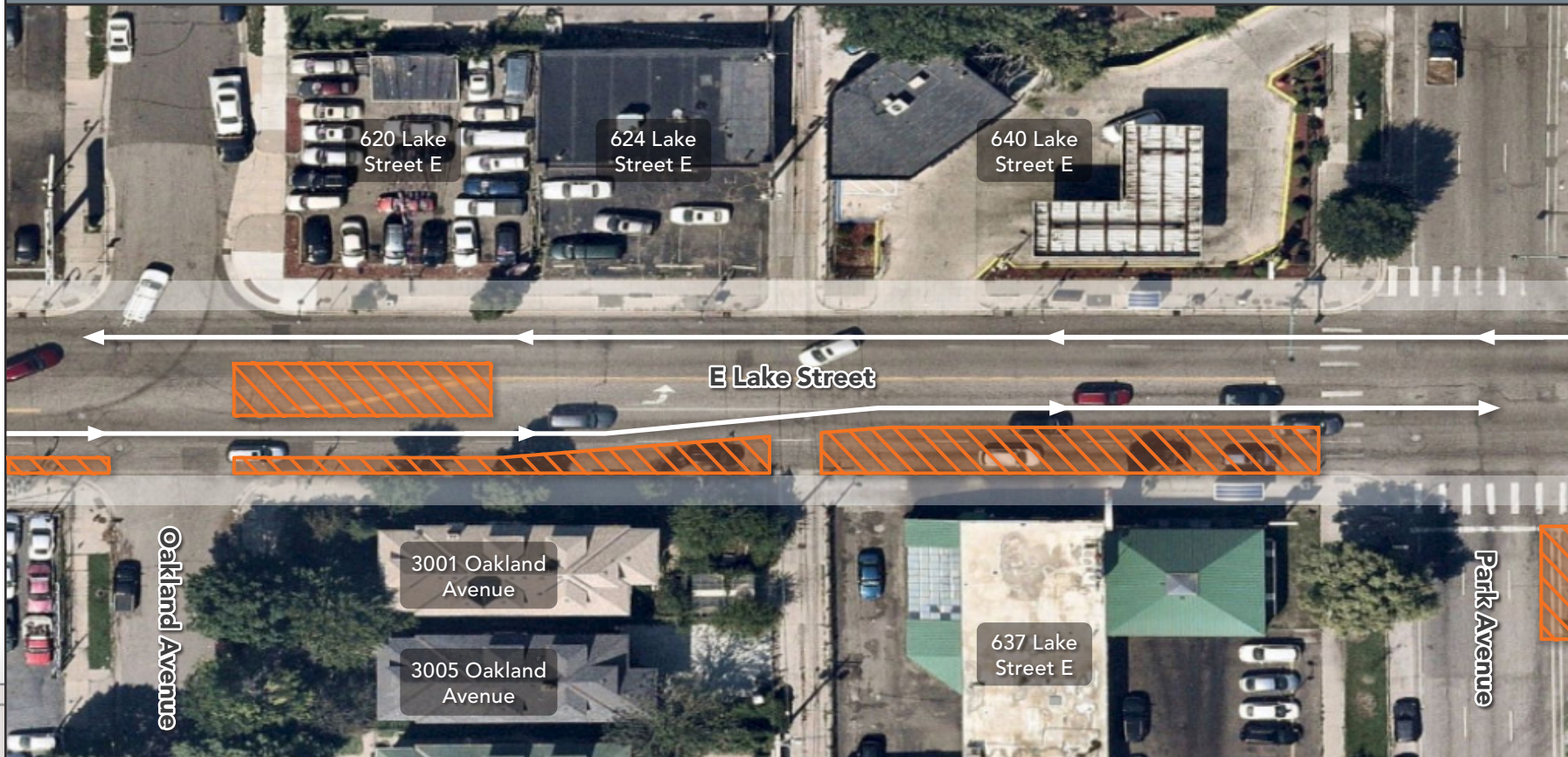
Legend:  Road Closure  Direction of Traffic  Existing Station Platform  Station Platform to be Constructed



Oakland Avenue to Park Avenue: Stage 1

🚧 South lanes and parking closed | Sidewalk and driveways open 🚧

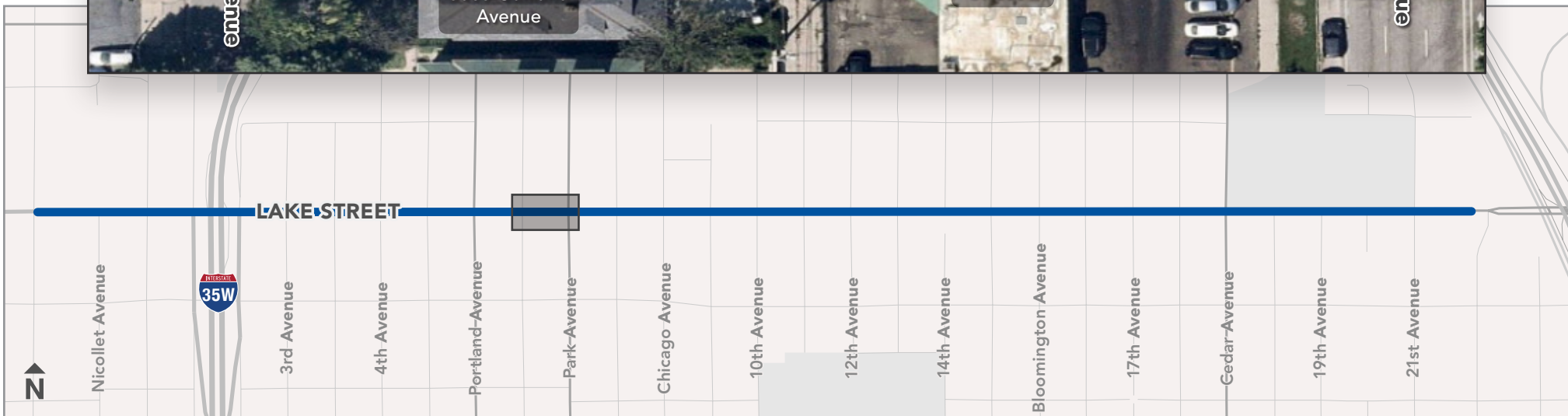
Legend:  Road Closure  Direction of Traffic  Existing Station Platform  Station Platform to be Constructed



Oakland Avenue to Park Avenue: Stage 2

🚧 North lanes and parking closed | Sidewalk and driveways open 🚧

Legend:  Road Closure  Direction of Traffic  Existing Station Platform  Station Platform to be Constructed



Park Avenue to Columbus Avenue: Stage 1

🚧 South lanes and parking closed | Sidewalk and driveways open 🚧

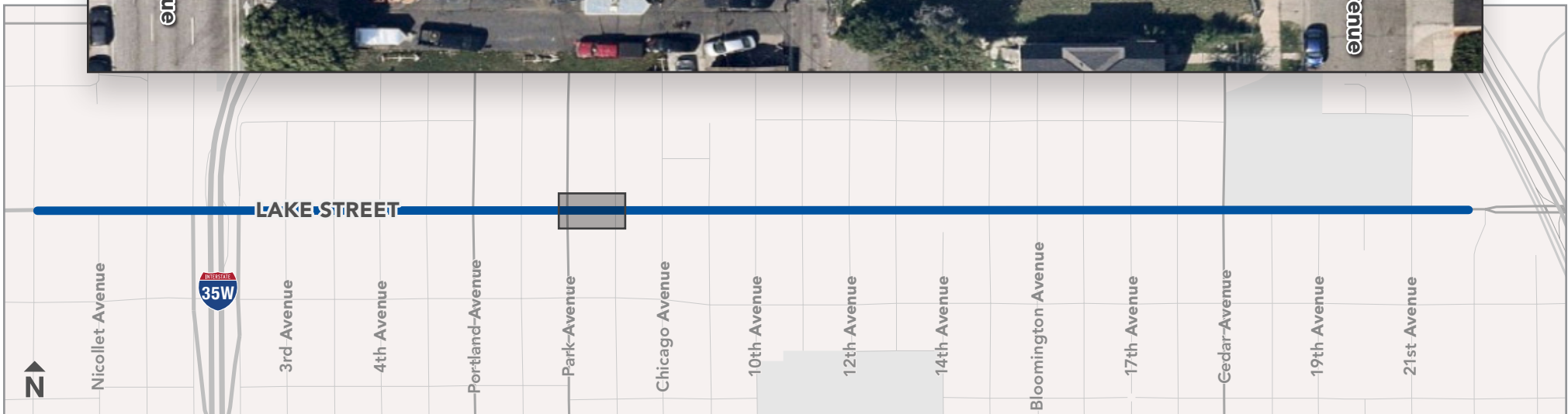
Legend:  Road Closure  Direction of Traffic  Existing Station Platform  Station Platform to be Constructed



Park Avenue to Columbus Avenue: Stage 2

🚧 North lanes and parking closed | Sidewalk and driveways open 🚧

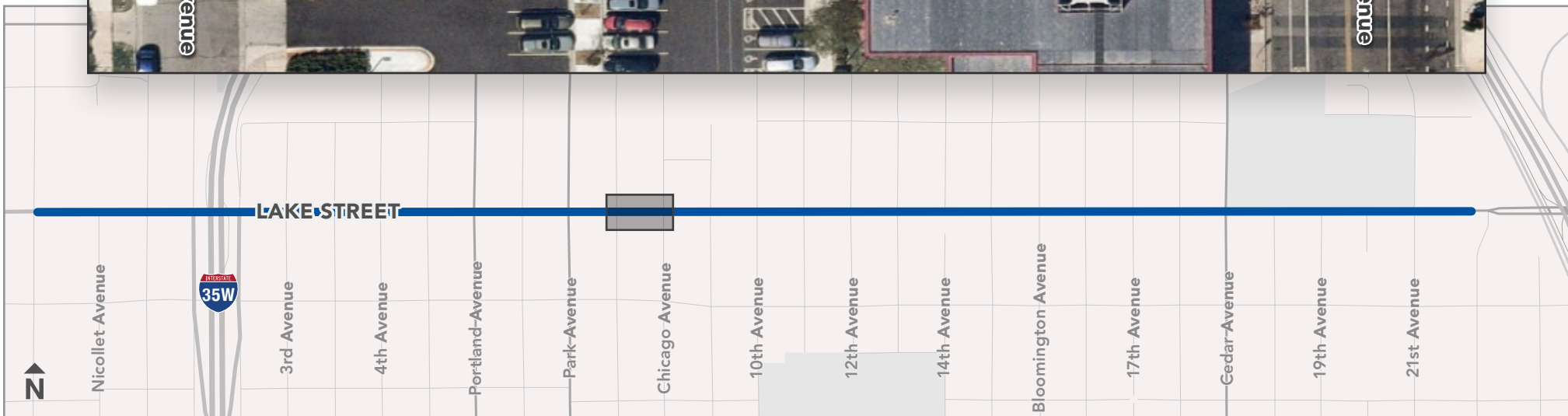
Legend:  Road Closure |  Direction of Traffic |  Existing Station Platform |  Station Platform to be Constructed



Columbus Avenue to Chicago Avenue: Stage 1

🚧 South lanes and parking closed | Sidewalk and driveways open 🚧

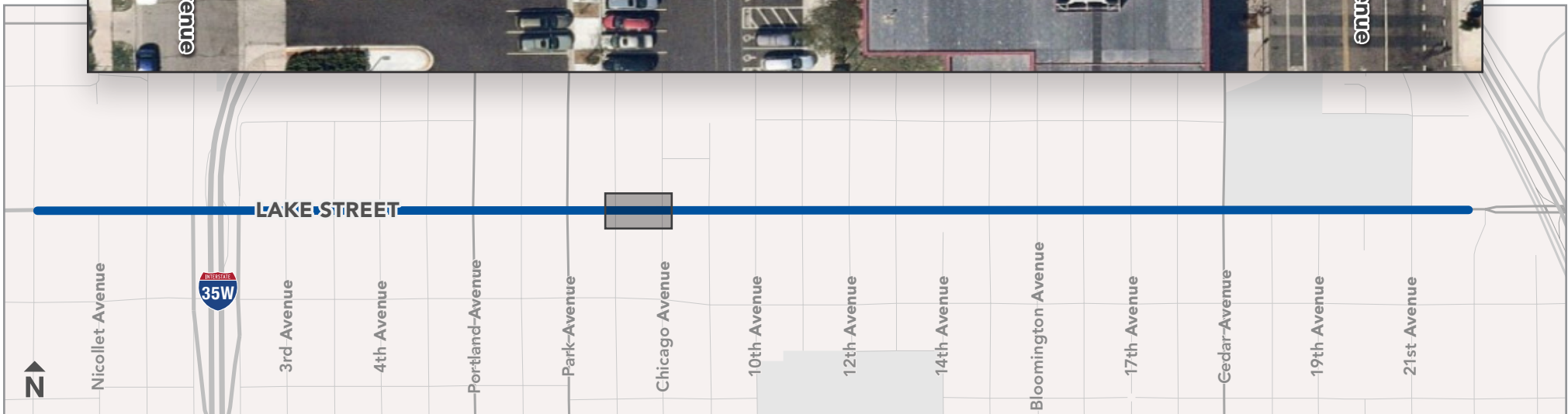
Legend:  Road Closure  Direction of Traffic  Existing Station Platform  Station Platform to be Constructed



Columbus Avenue to Chicago Avenue: Stage 2

🚧 North lanes and parking closed | Sidewalk and driveways open 🚧

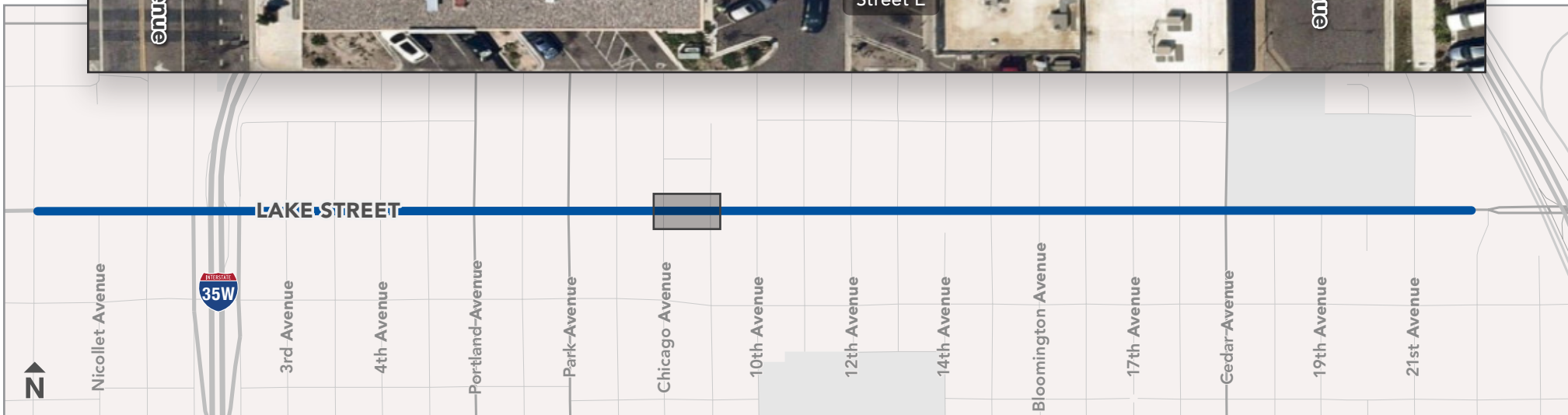
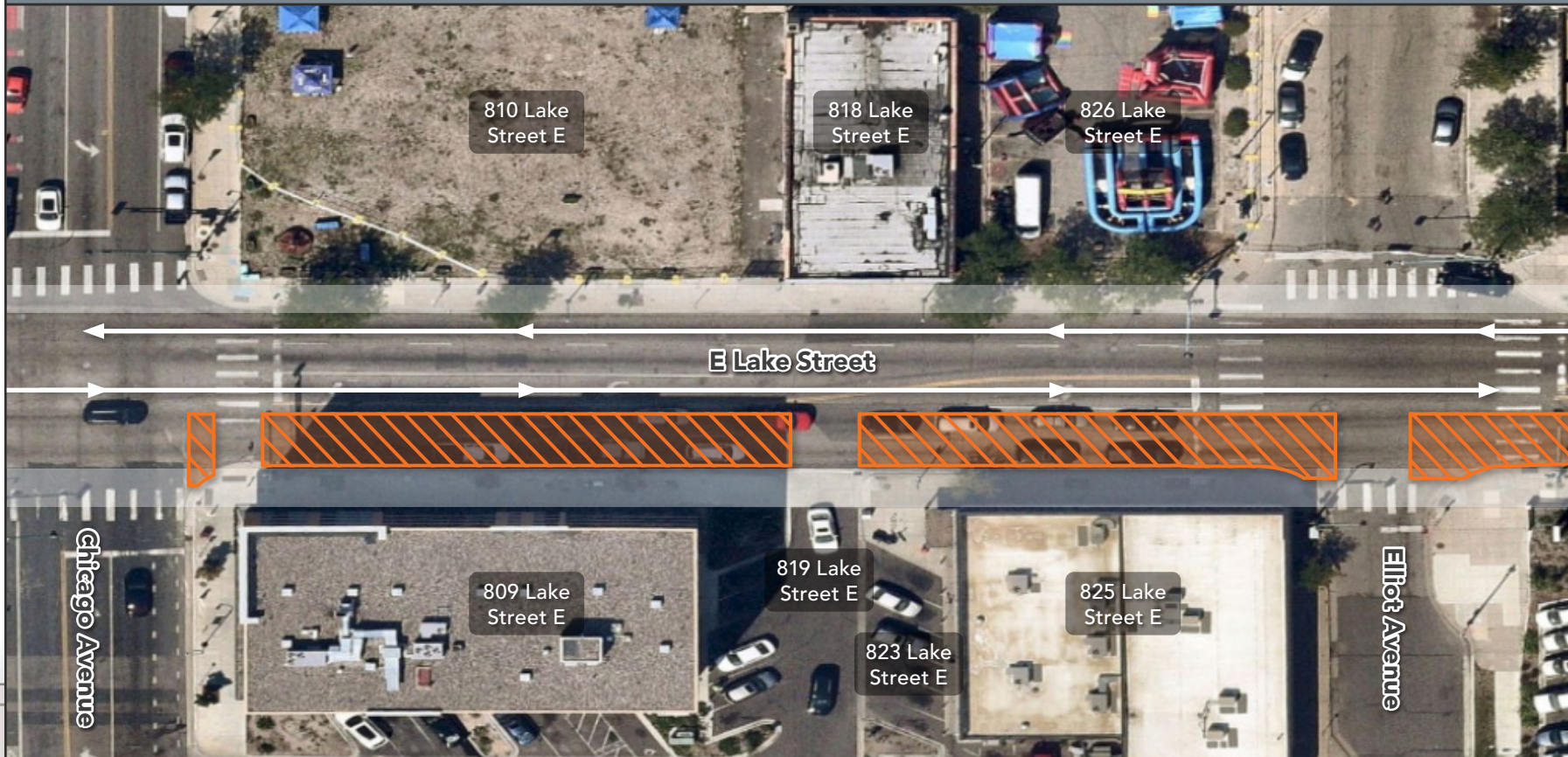
Legend:  Road Closure |  Direction of Traffic |  Existing Station Platform |  Station Platform to be Constructed



Chicago Avenue to Elliot Avenue: Stage 1

🚧 South lanes and parking closed | Sidewalk and driveways open 🚧

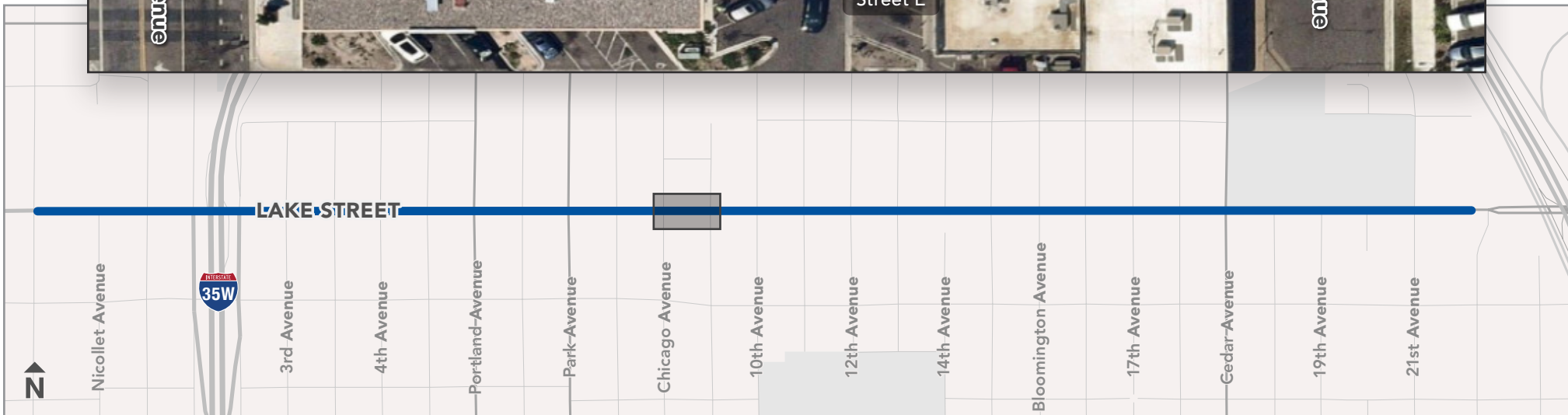
Legend:  Road Closure  Direction of Traffic  Existing Station Platform  Station Platform to be Constructed



Chicago Avenue to Elliot Avenue: Stage 2

🚧 North lanes and parking closed | Sidewalk and driveways open 🚧

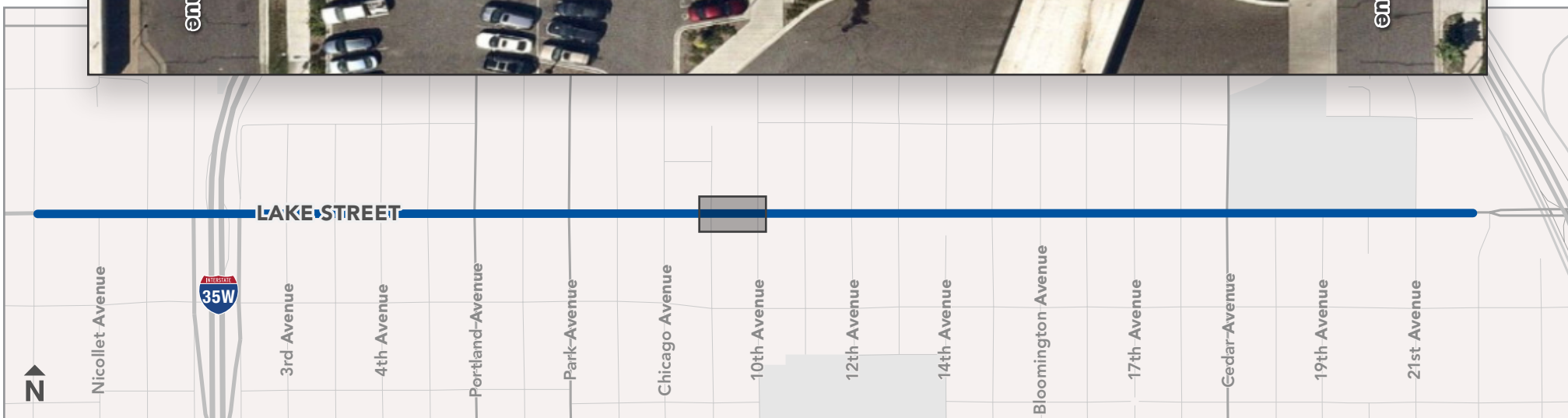
Legend:  Road Closure  Direction of Traffic  Existing Station Platform  Station Platform to be Constructed



Elliot Avenue to 10th Avenue: Stage 1

🚧 South lanes and parking closed | Sidewalk and driveways open 🚧

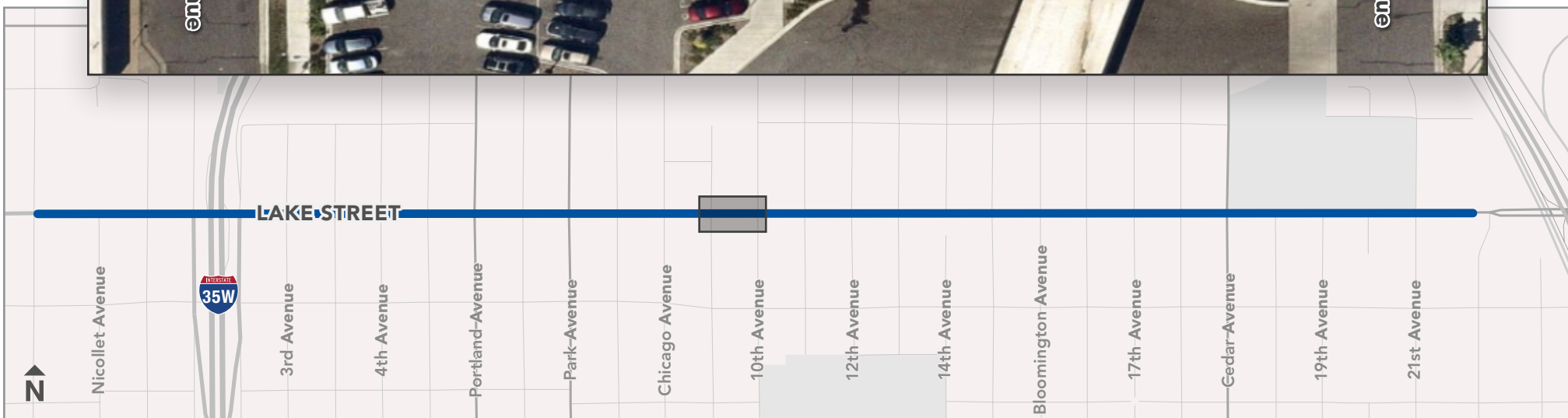
Legend:  Road Closure |  Direction of Traffic |  Existing Station Platform |  Station Platform to be Constructed



Elliot Avenue to 10th Avenue: Stage 2

🚧 North lanes and parking closed | Sidewalk and driveways open 🚧

Legend:  Road Closure |  Direction of Traffic |  Existing Station Platform |  Station Platform to be Constructed



10th Avenue to 11th Avenue: Stage 1

🚧 South lanes and parking closed | Sidewalk and driveways open 🚧

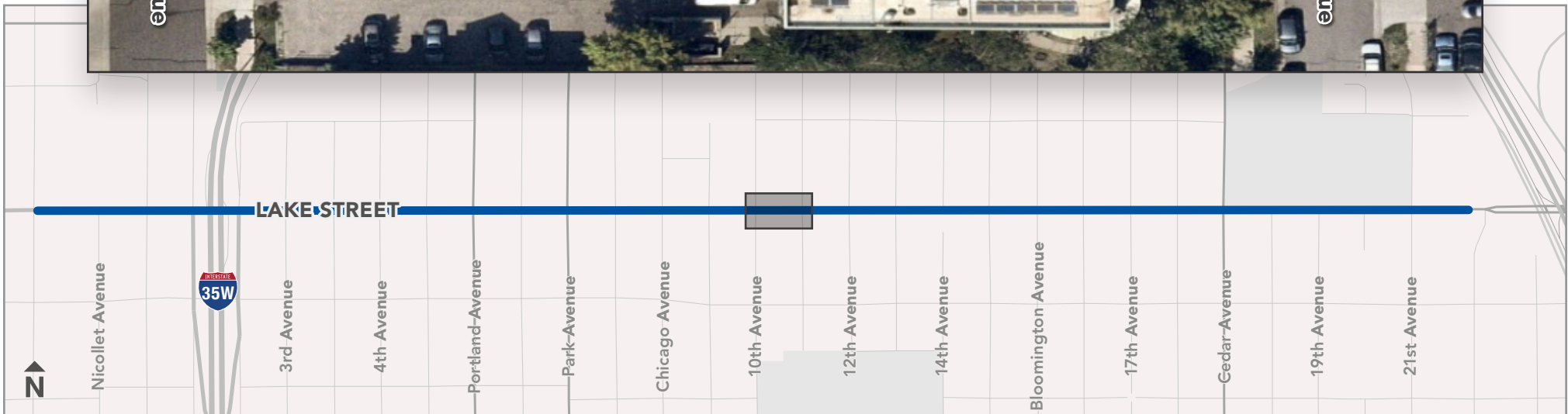
Legend:  Road Closure  Direction of Traffic  Existing Station Platform  Station Platform to be Constructed



10th Avenue to 11th Avenue: Stage 2

🚧 North lanes and parking closed | Sidewalk and driveways open 🚧

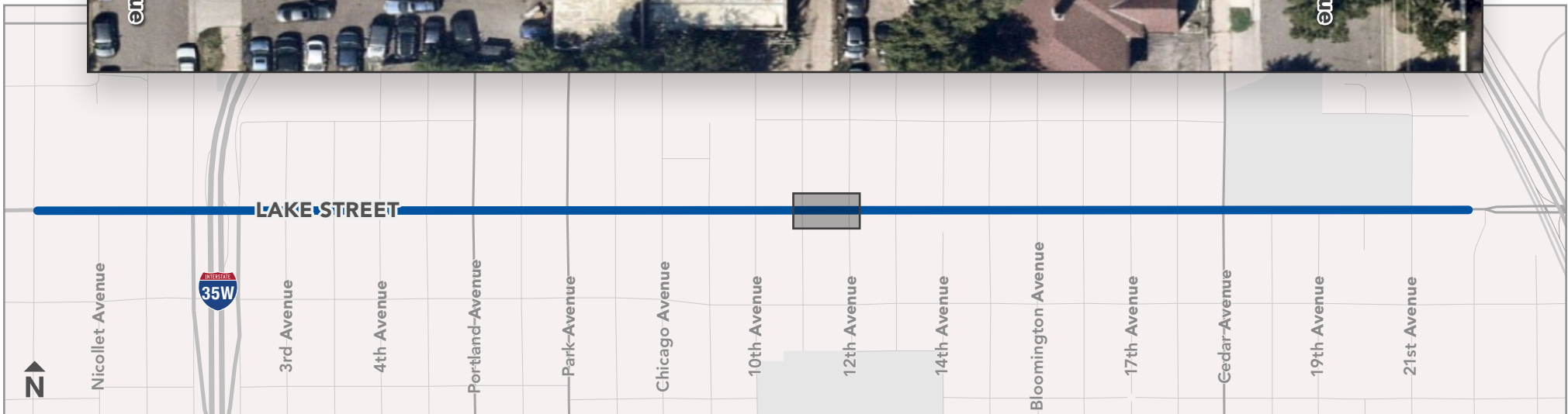
Legend:  Road Closure  Direction of Traffic  Existing Station Platform  Station Platform to be Constructed



11th Avenue to 12th Avenue: Stage 1

🚧 South lanes and parking closed | Sidewalk and driveways open 🚧

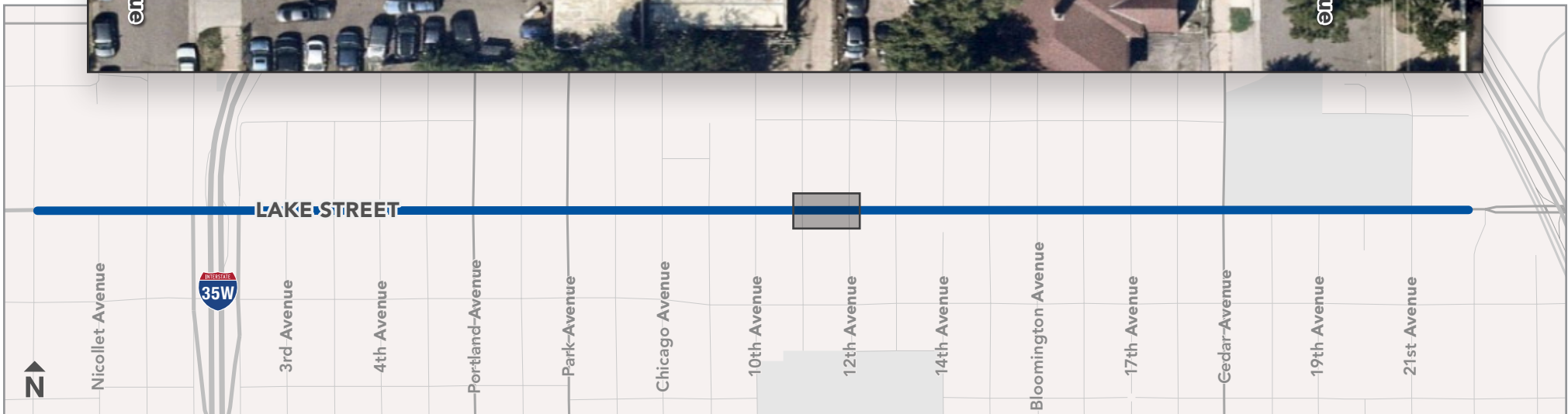
Legend:  Road Closure  Direction of Traffic  Existing Station Platform  Station Platform to be Constructed



11th Avenue to 12th Avenue: Stage 2

🚧 North lanes and parking closed | Sidewalk and driveways open 🚧

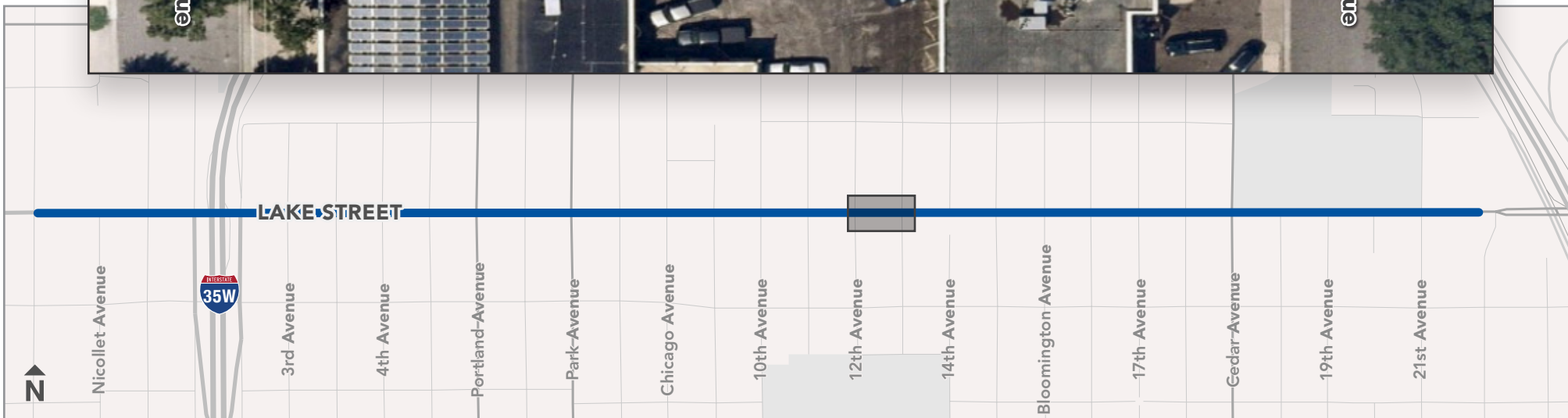
Legend:  Road Closure  Direction of Traffic  Existing Station Platform  Station Platform to be Constructed



12th Avenue to 13th Avenue: Stage 1

🚧 South lanes and parking closed | Sidewalk and driveways open 🚧

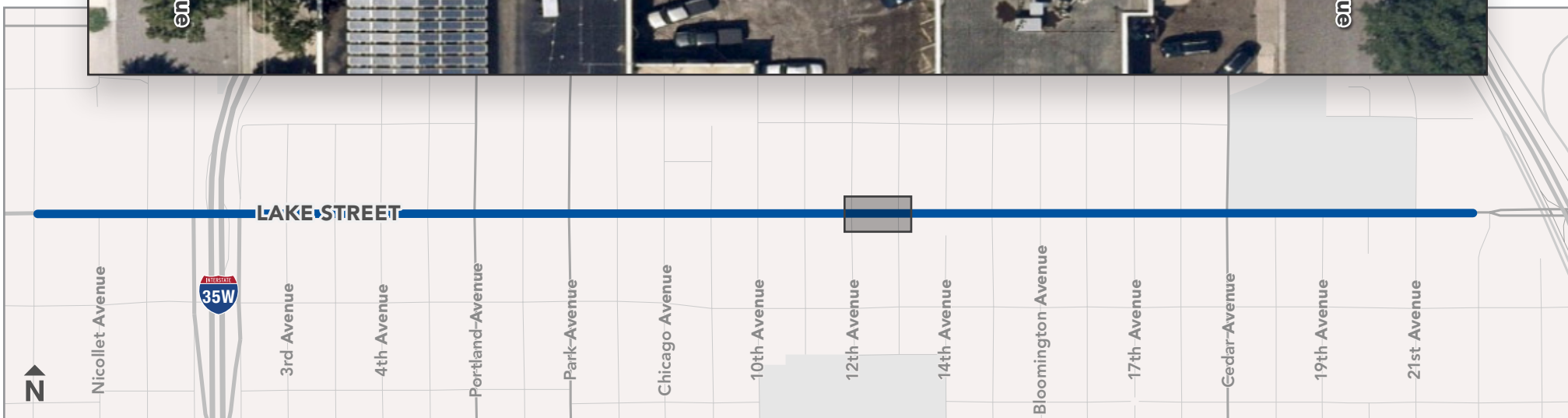
Legend:  Road Closure  Direction of Traffic  Existing Station Platform  Station Platform to be Constructed



12th Avenue to 13th Avenue: Stage 2

🚧 North lanes and parking closed | Sidewalk and driveways open 🚧

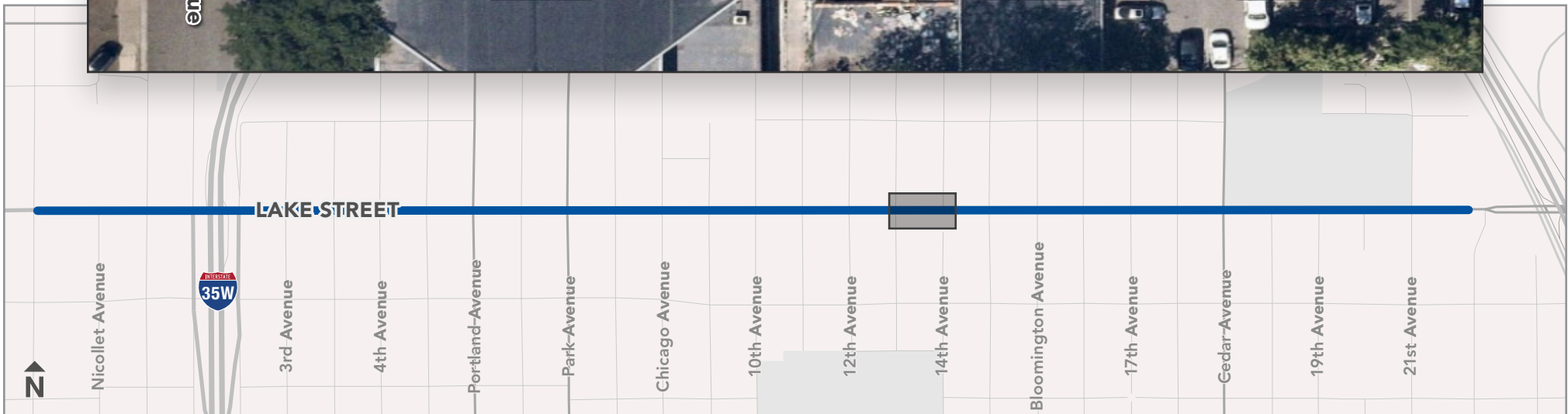
Legend:  Road Closure  Direction of Traffic  Existing Station Platform  Station Platform to be Constructed



13th Avenue to 14th Avenue: Stage 1

🚧 South lanes and parking closed | Sidewalk and driveways open 🚧

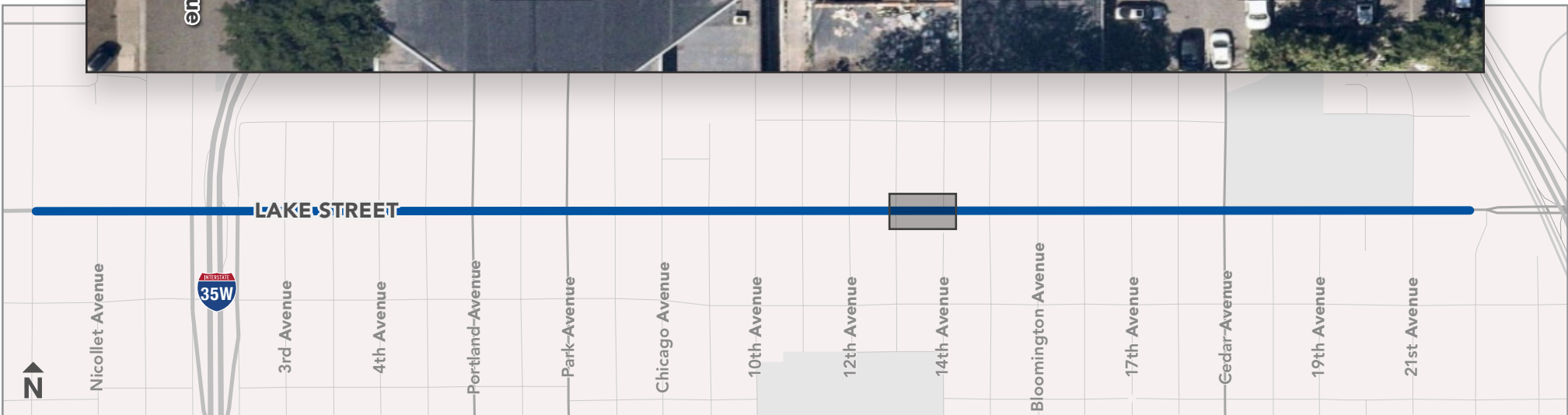
Legend:  Road Closure  Direction of Traffic  Existing Station Platform  Station Platform to be Constructed



13th Avenue to 14th Avenue: Stage 2

🚧 North lanes and parking closed | Sidewalk and driveways open 🚧

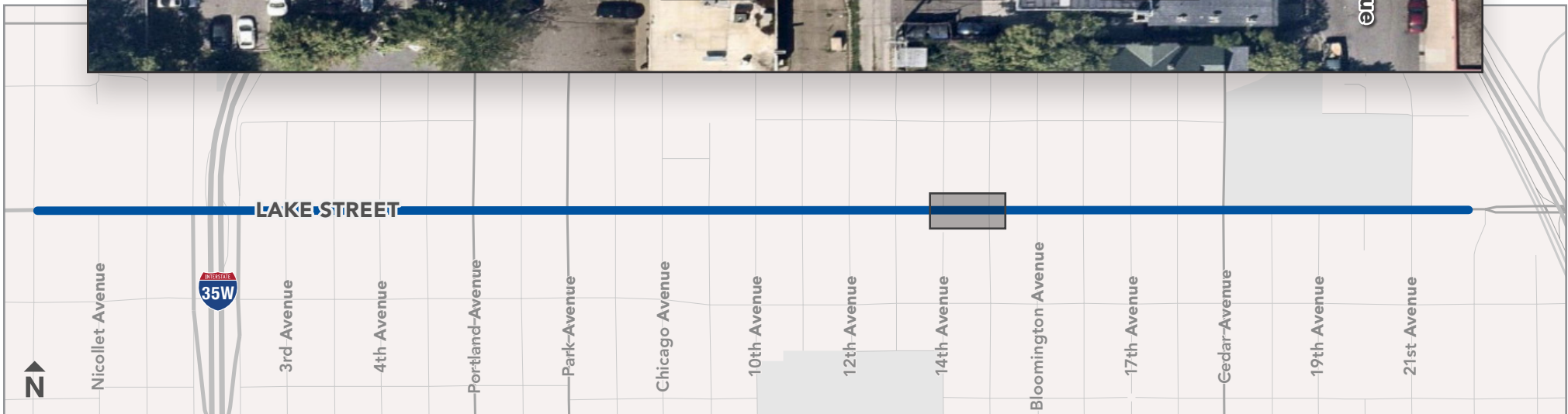
Legend:  Road Closure  Direction of Traffic  Existing Station Platform  Station Platform to be Constructed



14th Avenue to 15th Avenue: Stage 1

🚧 South lanes and parking closed | Sidewalk and driveways open 🚧

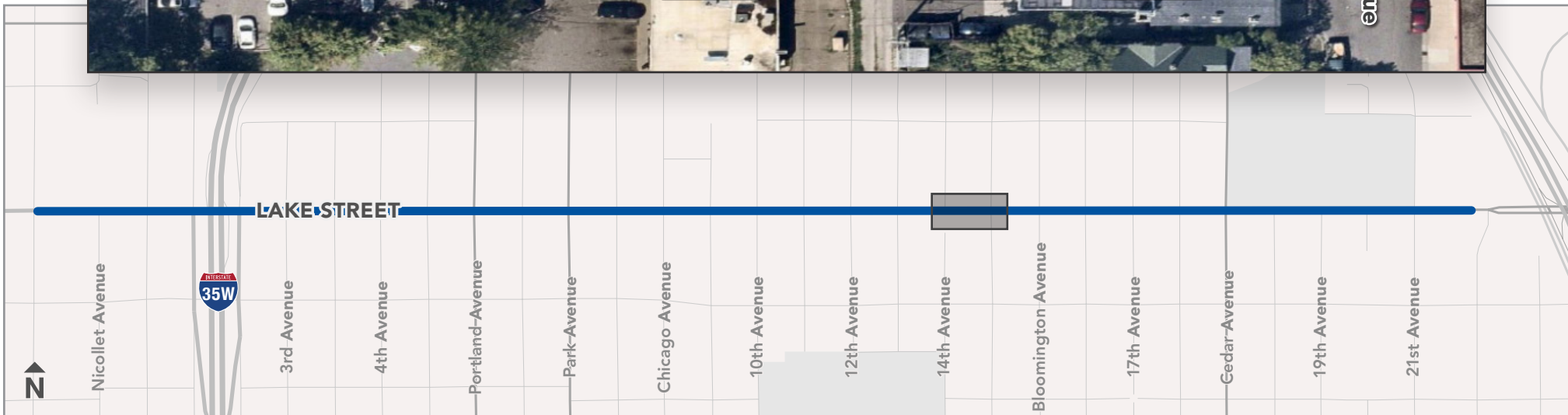
Legend:  Road Closure  Direction of Traffic  Existing Station Platform  Station Platform to be Constructed



14th Avenue to 15th Avenue: Stage 2

🚧 North lanes and parking closed | Sidewalk and driveways open 🚧

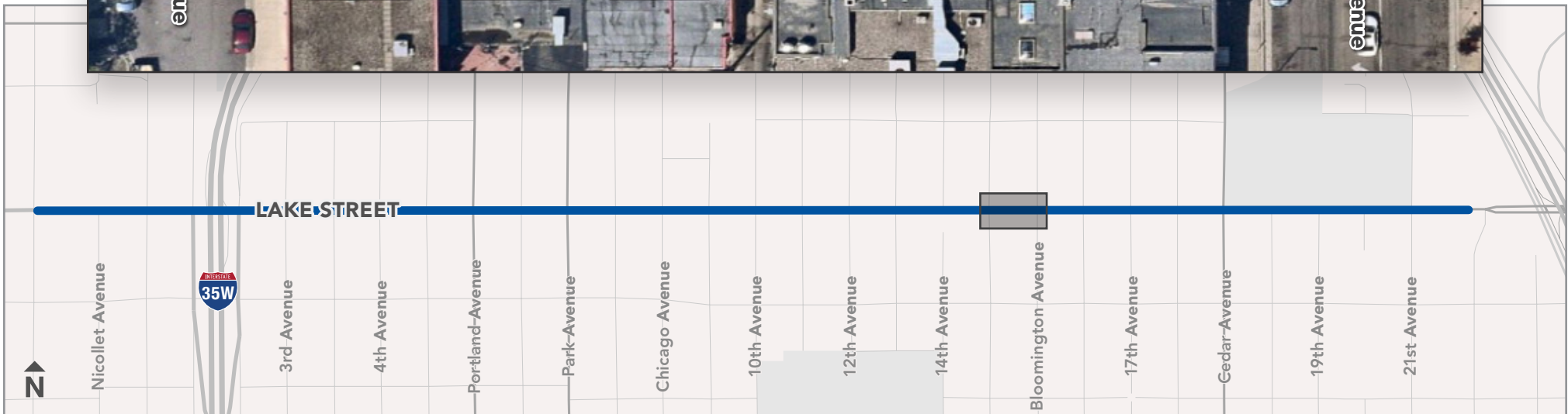
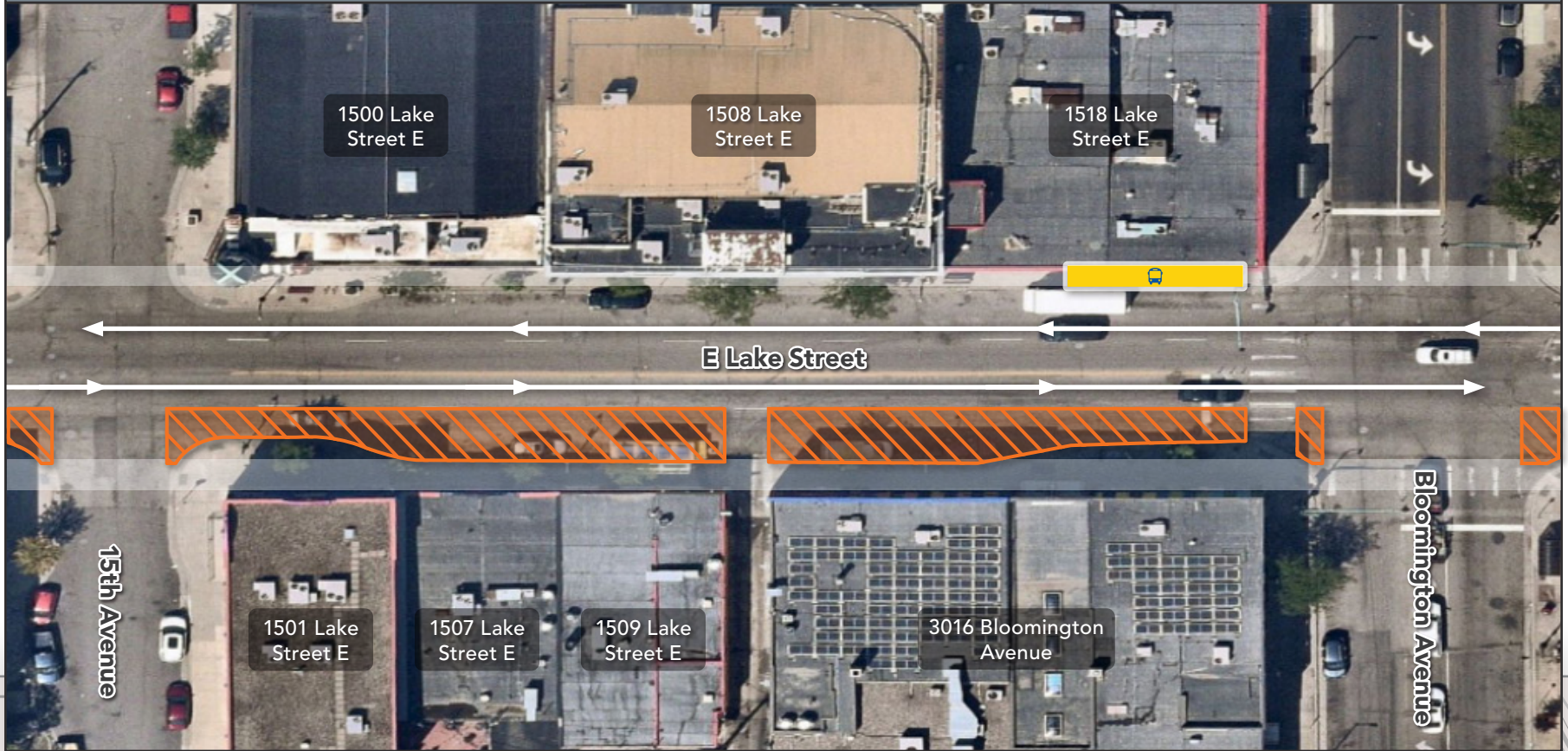
Legend:  Road Closure  Direction of Traffic  Existing Station Platform  Station Platform to be Constructed



15th Avenue to Bloomington Avenue: Stage 1

🚧 South lanes and parking closed | Sidewalk and driveways open 🚧

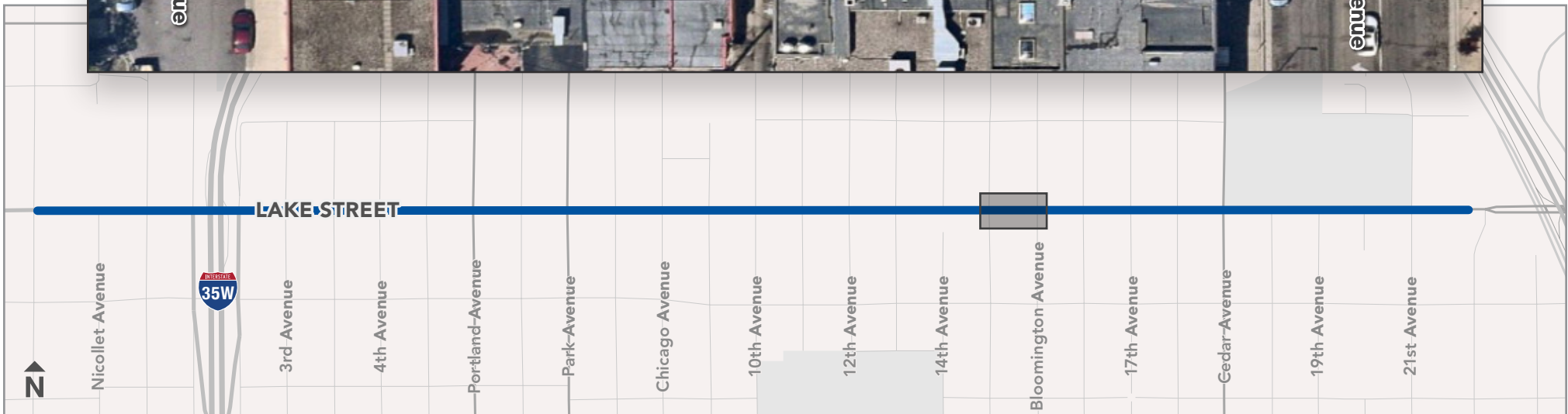
Legend:  Road Closure  Direction of Traffic  Existing Station Platform  Station Platform to be Constructed



15th Avenue to Bloomington Avenue: Stage 2

🚧 North lanes and parking closed | Sidewalk and driveways open 🚧

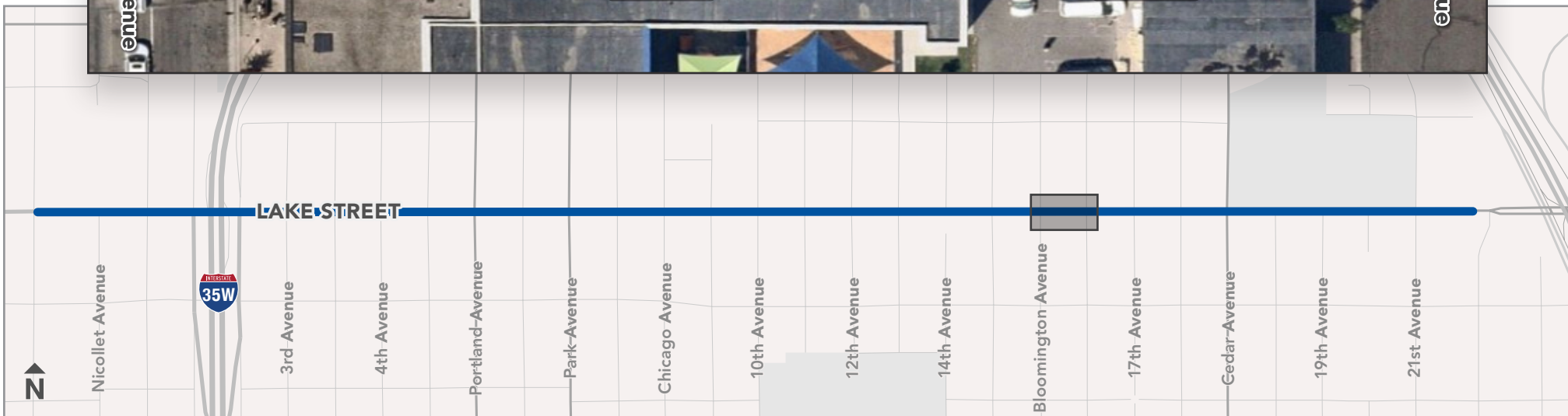
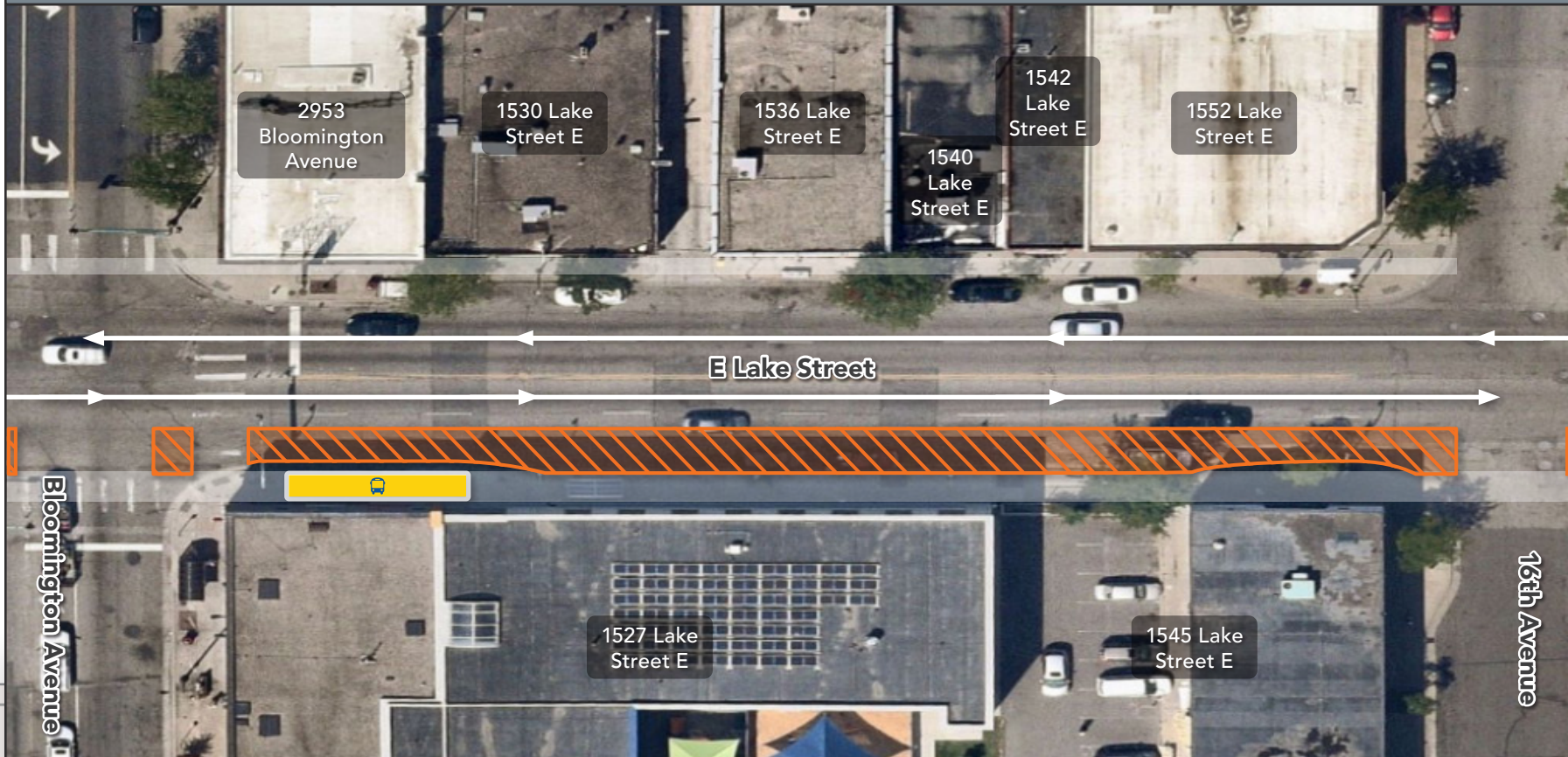
Legend:  Road Closure  Direction of Traffic  Existing Station Platform  Station Platform to be Constructed



Bloomington Avenue to 16th Avenue: Stage 1

🚧 South lanes and parking closed | Sidewalk and driveways open 🚧

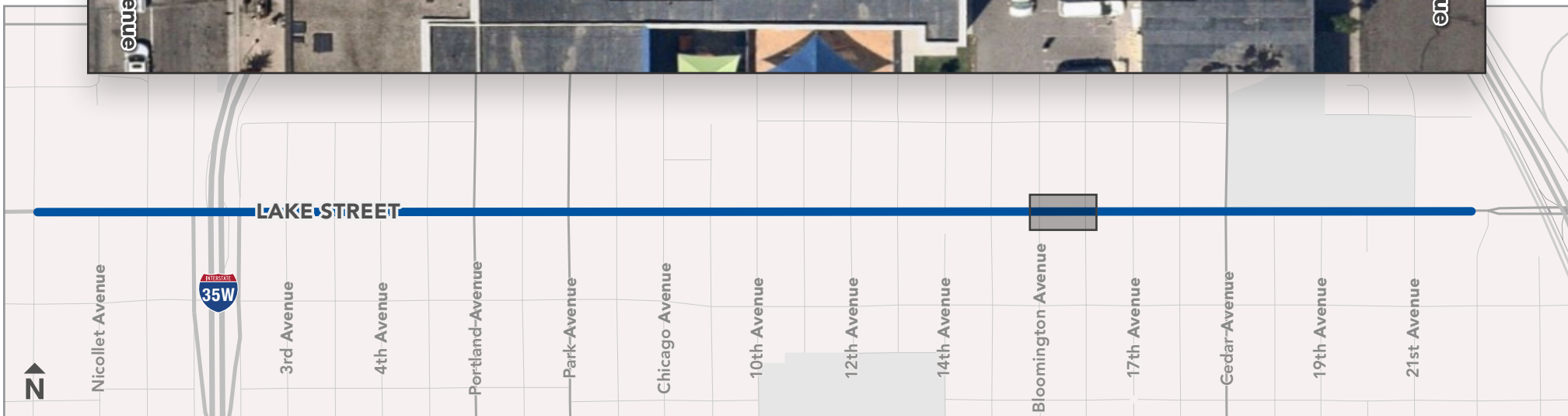
Legend:  Road Closure  Direction of Traffic  Existing Station Platform  Station Platform to be Constructed



Bloomington Avenue to 16th Avenue: Stage 2

🚧 North lanes and parking closed | Sidewalk and driveways open 🚧

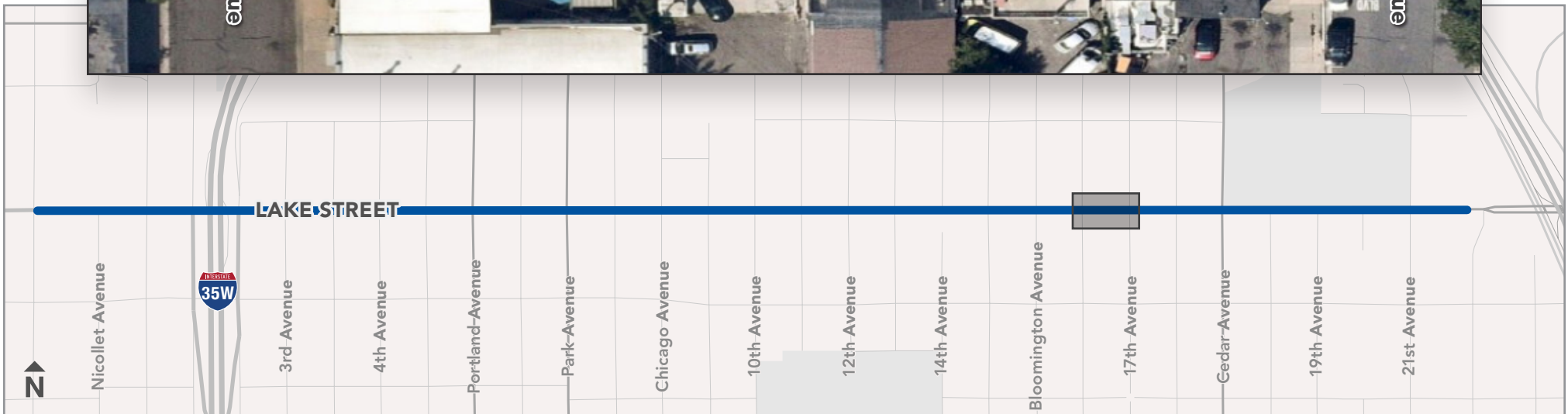
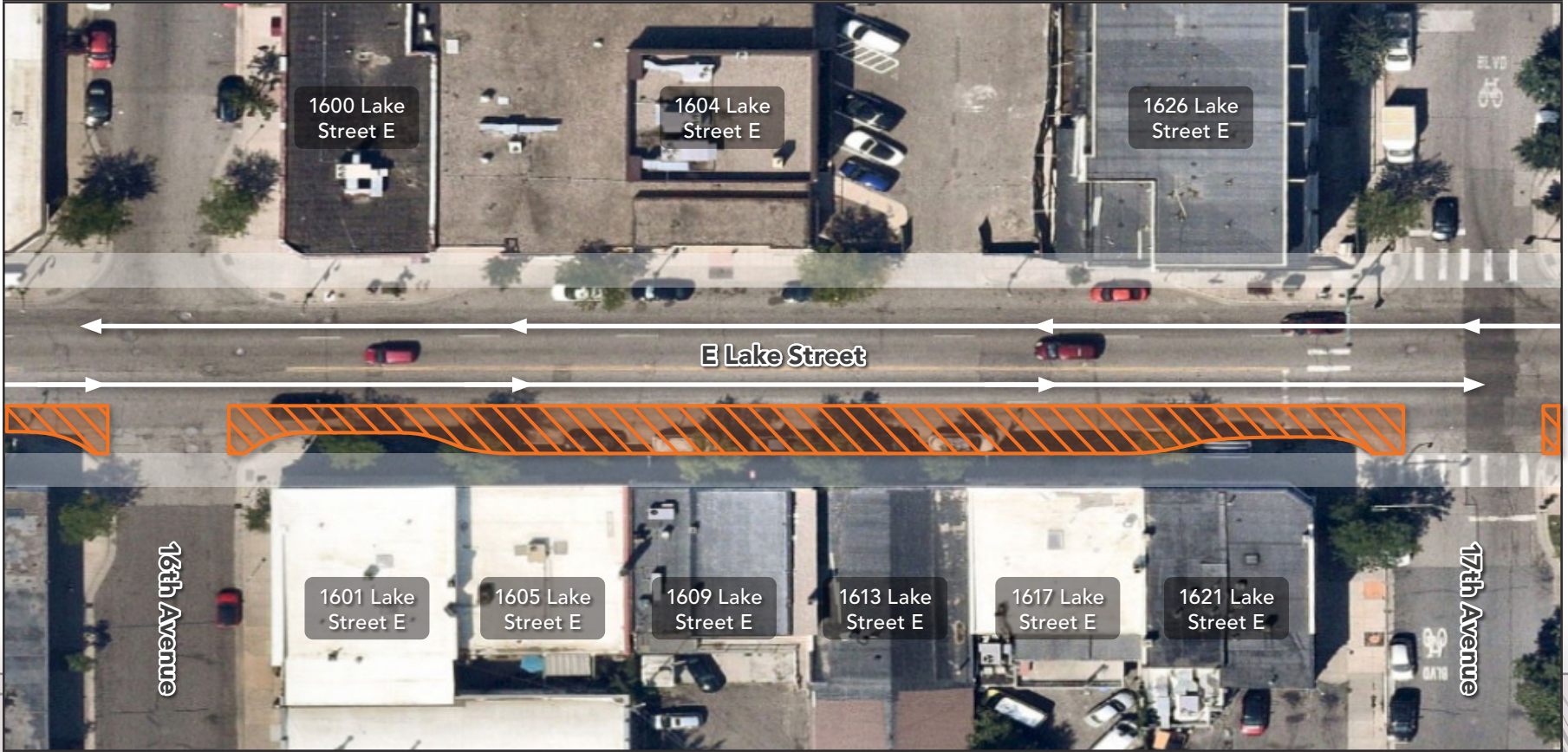
Legend:  Road Closure  Direction of Traffic  Existing Station Platform  Station Platform to be Constructed



16th Avenue to 17th Avenue: Stage 1

🚧 South lanes and parking closed | Sidewalk and driveways open 🚧

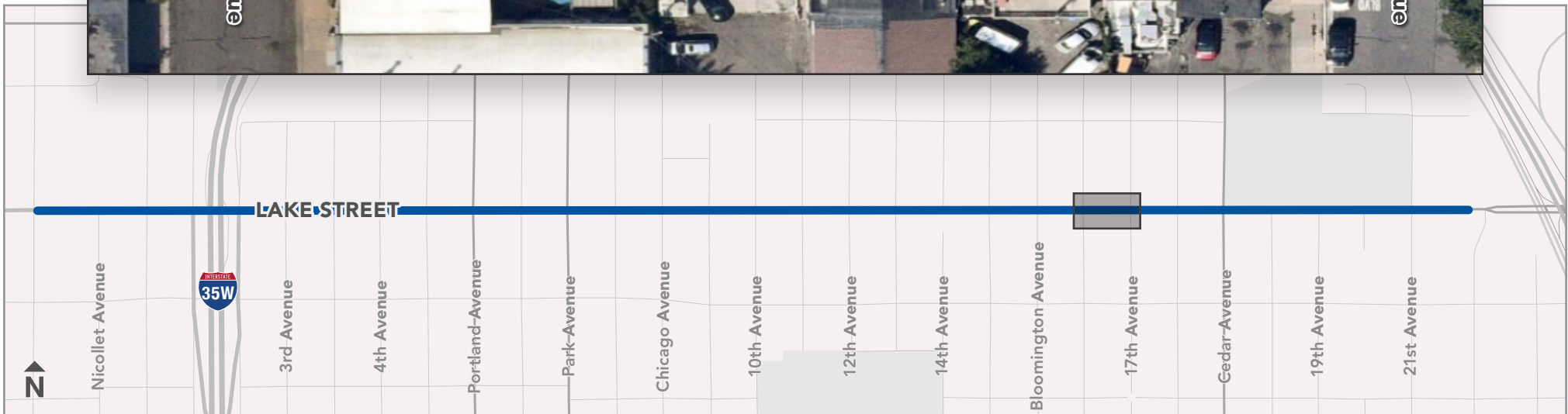
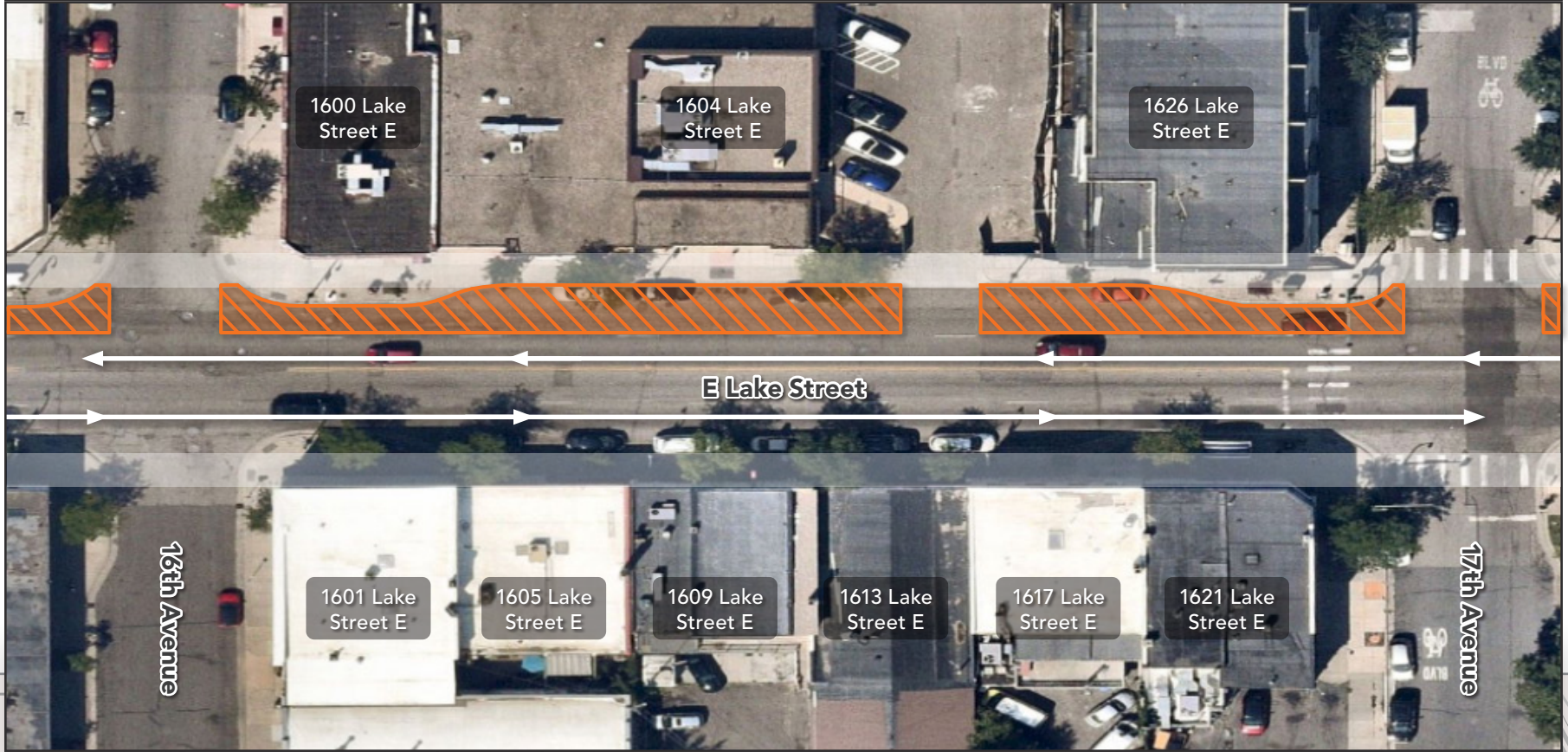
Legend:  Road Closure  Direction of Traffic  Existing Station Platform  Station Platform to be Constructed



16th Avenue to 17th Avenue: Stage 2

🚧 North lanes and parking closed | Sidewalk and driveways open 🚧

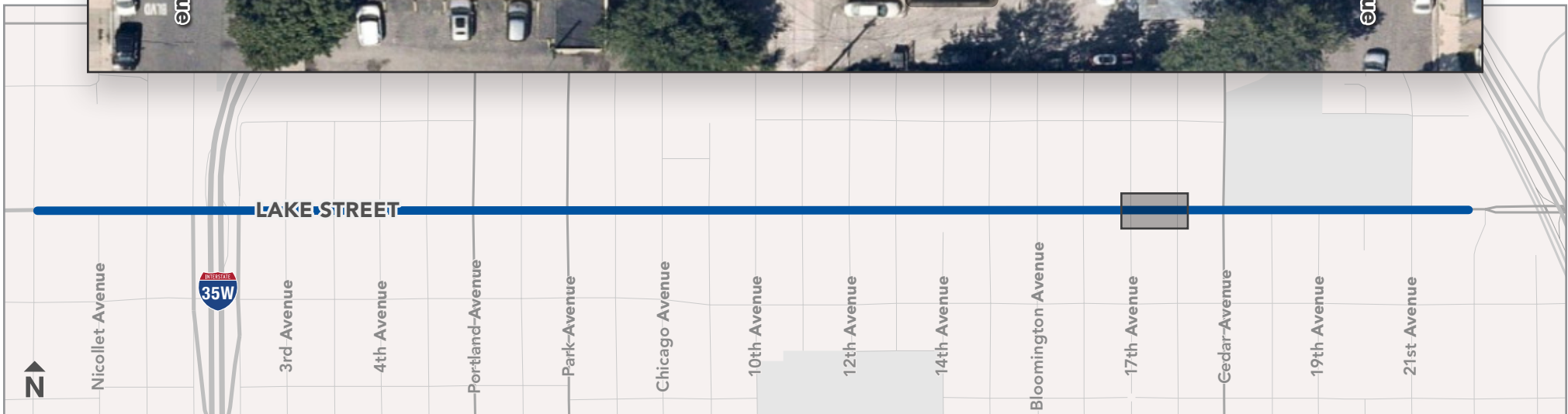
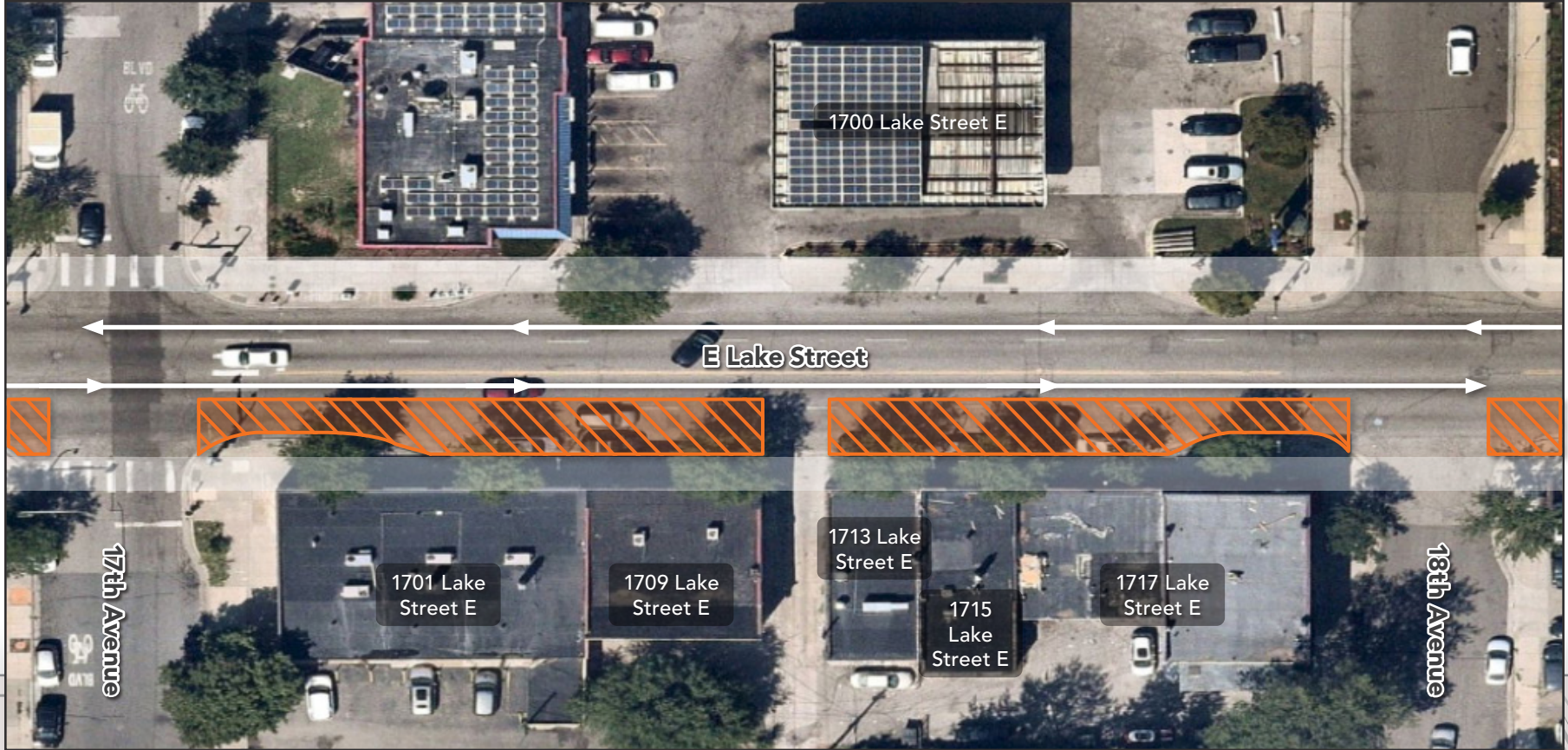
Legend:  Road Closure |  Direction of Traffic |  Existing Station Platform |  Station Platform to be Constructed



17th Avenue to 18th Avenue: Stage 1

🚧 South lanes and parking closed | Sidewalk and driveways open 🚧

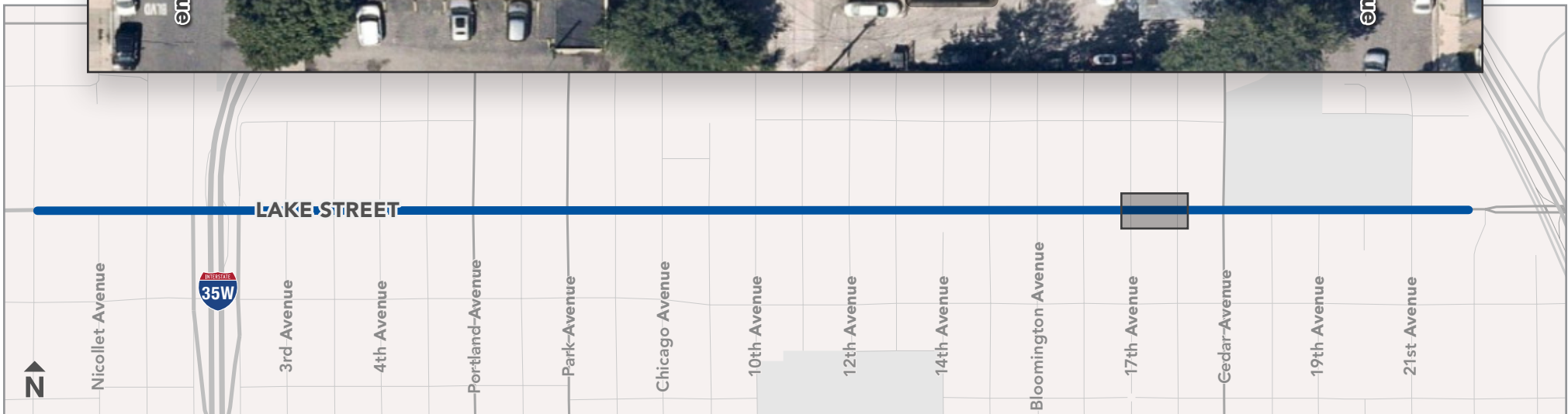
Legend:  Road Closure  Direction of Traffic  Existing Station Platform  Station Platform to be Constructed



17th Avenue to 18th Avenue: Stage 2

🚧 North lanes and parking closed | Sidewalk and driveways open 🚧

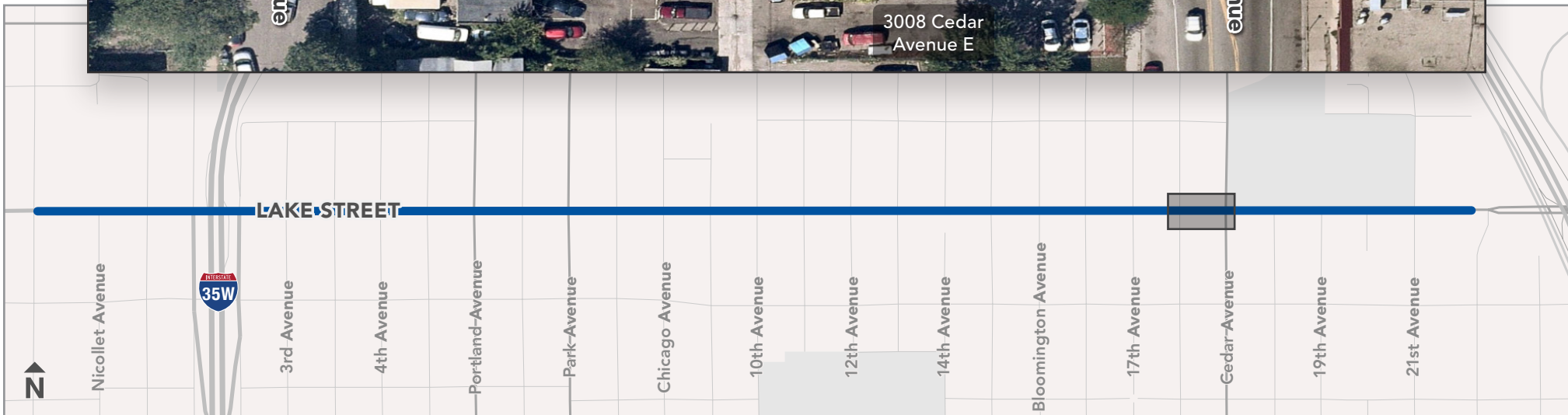
Legend:  Road Closure  Direction of Traffic  Existing Station Platform  Station Platform to be Constructed



18th Avenue to Cedar Avenue: Stage 1

🚧 South lanes and parking closed | Sidewalk and driveways open 🚧

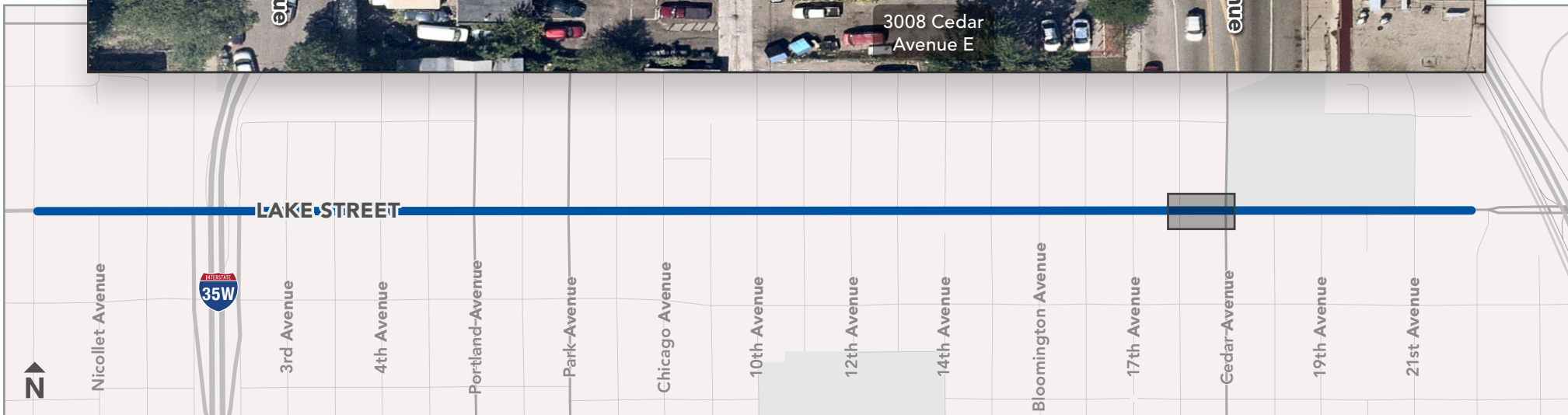
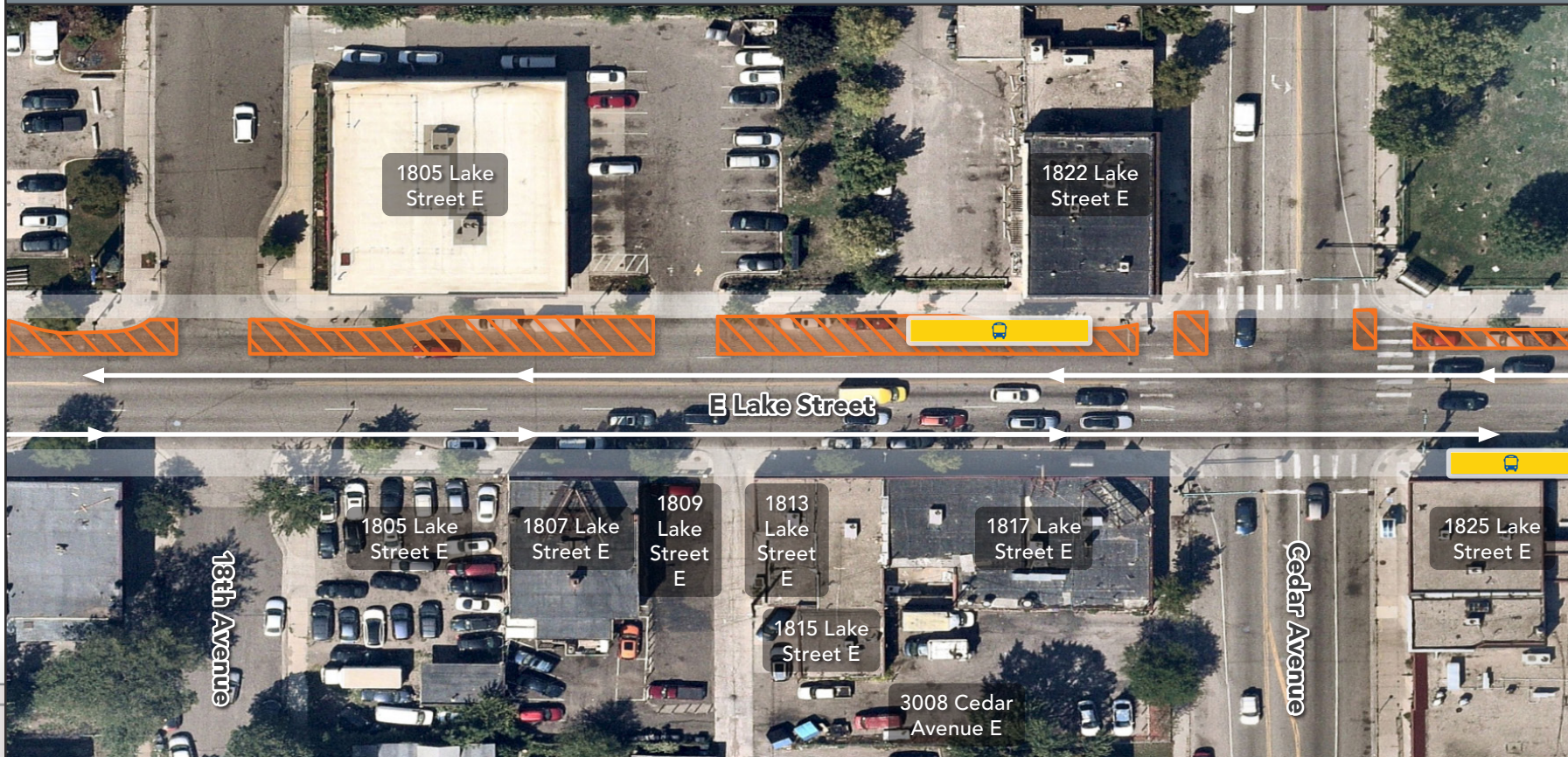
Legend:  Road Closure  Direction of Traffic  Existing Station Platform  Station Platform to be Constructed



18th Avenue to Cedar Avenue: Stage 2

🚧 North lanes and parking closed | Sidewalk and driveways open 🚧

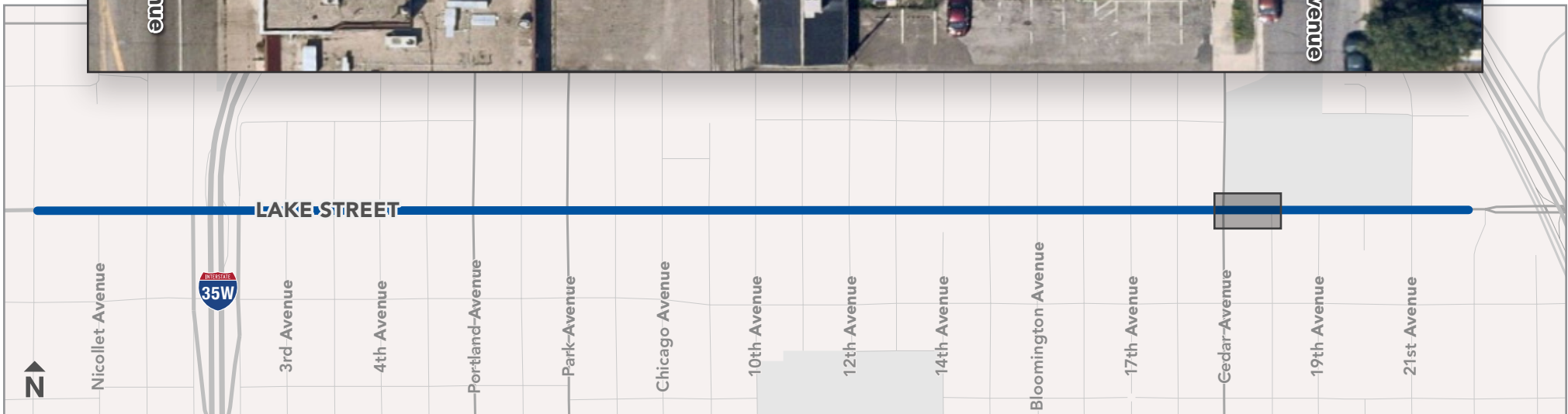
Legend:  Road Closure  Direction of Traffic  Existing Station Platform  Station Platform to be Constructed



Cedar Avenue to Longfellow Avenue: Stage 1

🚧 South lanes and parking closed | Sidewalk and driveways open 🚧

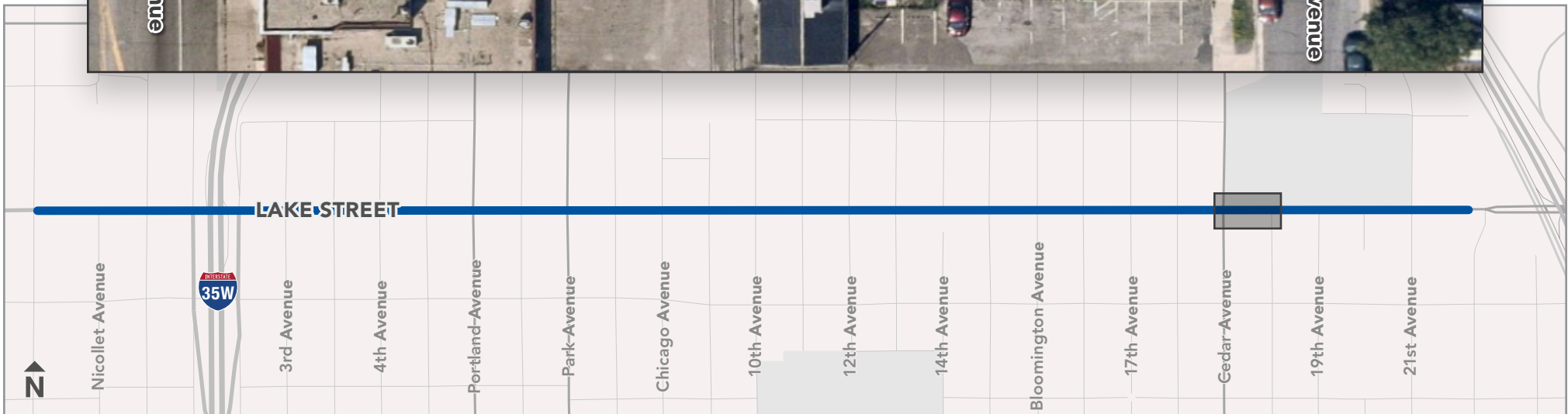
Legend:  Road Closure  Direction of Traffic  Existing Station Platform  Station Platform to be Constructed



Cedar Avenue to Longfellow Avenue: Stage 2

🚧 North lanes and parking closed | Sidewalk and driveways open 🚧

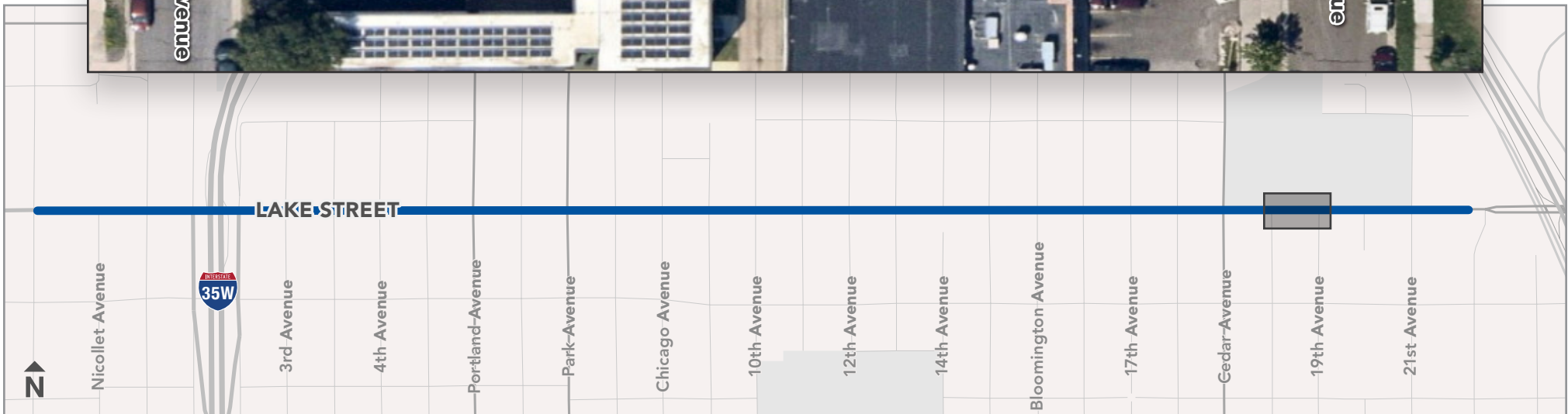
Legend:  Road Closure  Direction of Traffic  Existing Station Platform  Station Platform to be Constructed



Longfellow Avenue to 19th Avenue: Stage 1

🚧 South lanes and parking closed | Sidewalk and driveways open 🚧

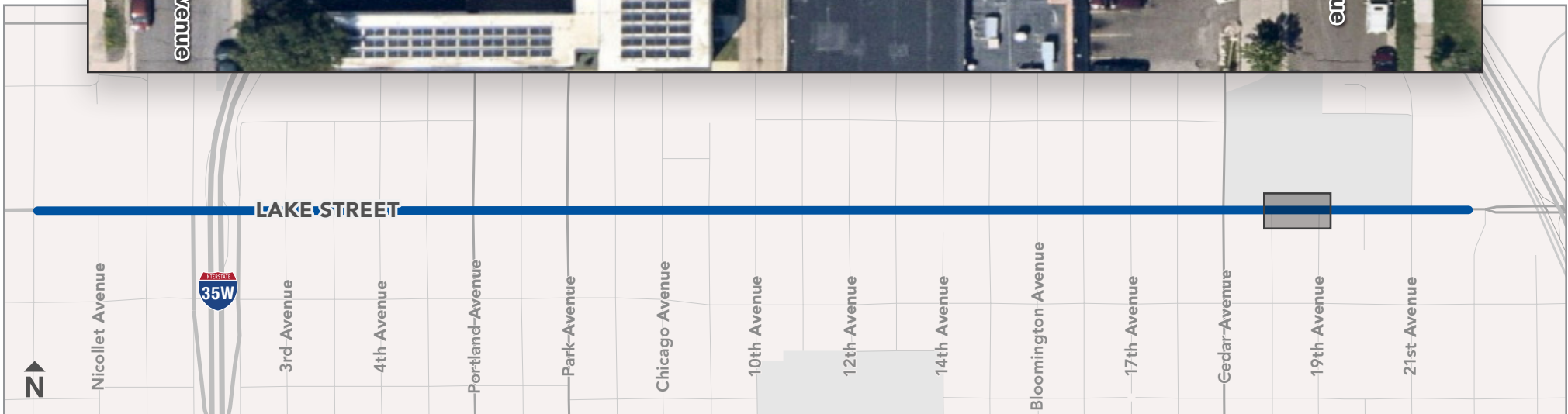
Legend:  Road Closure  Direction of Traffic  Existing Station Platform  Station Platform to be Constructed



Longfellow Avenue to 19th Avenue: Stage 2

🚧 North lanes and parking closed | Sidewalk and driveways open 🚧

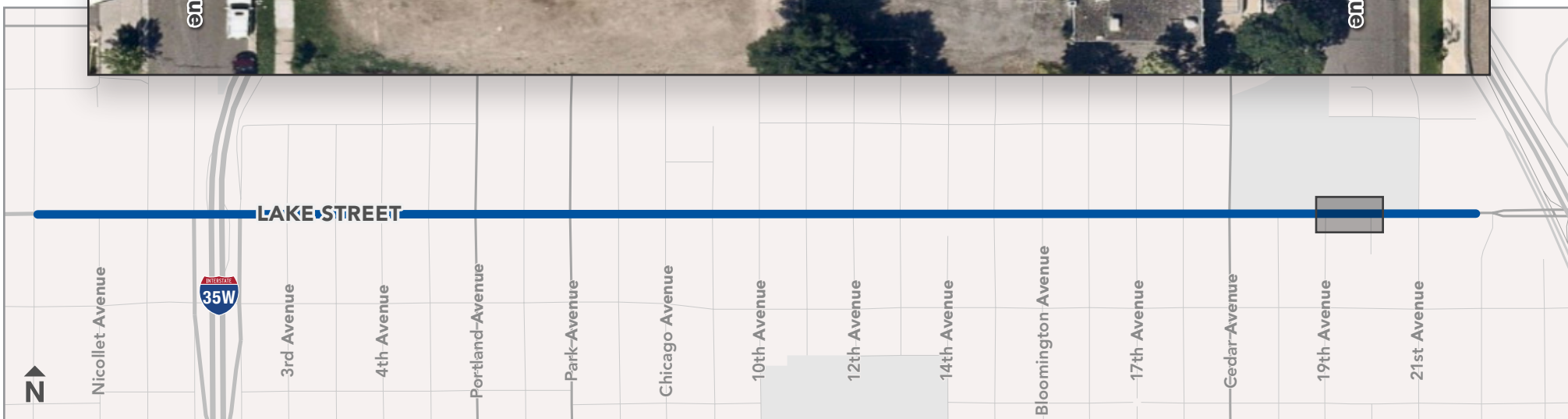
Legend:  Road Closure |  Direction of Traffic |  Existing Station Platform |  Station Platform to be Constructed



19th Avenue to 20th Avenue: Stage 1

🚧 South lanes and parking closed | Sidewalk and driveways open 🚧

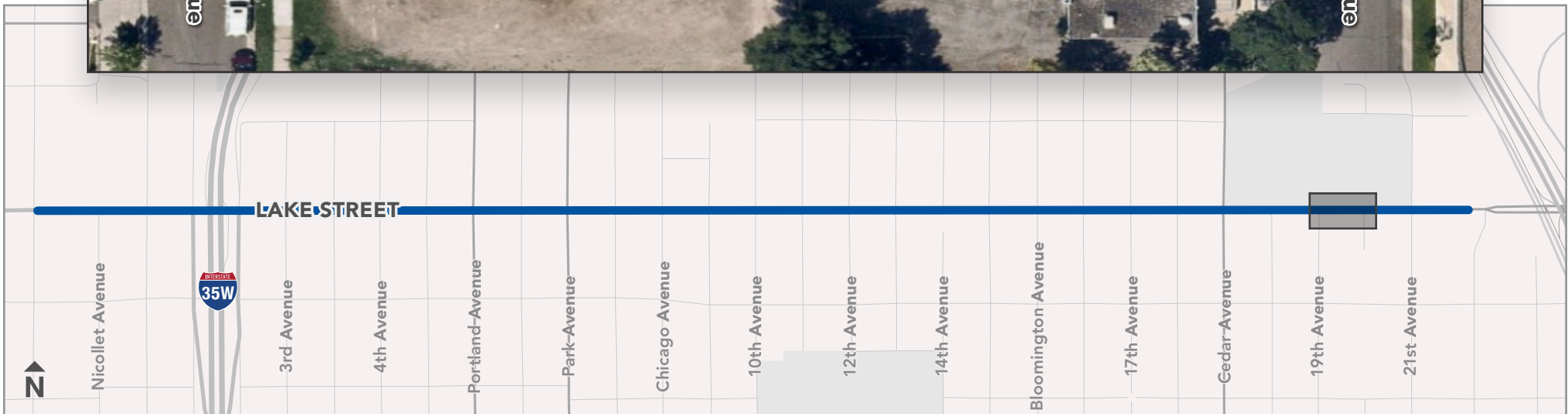
Legend:  Road Closure |  Direction of Traffic |  Existing Station Platform |  Station Platform to be Constructed



19th Avenue to 20th Avenue: Stage 2

🚧 North lanes and parking closed | Sidewalk and driveways open 🚧

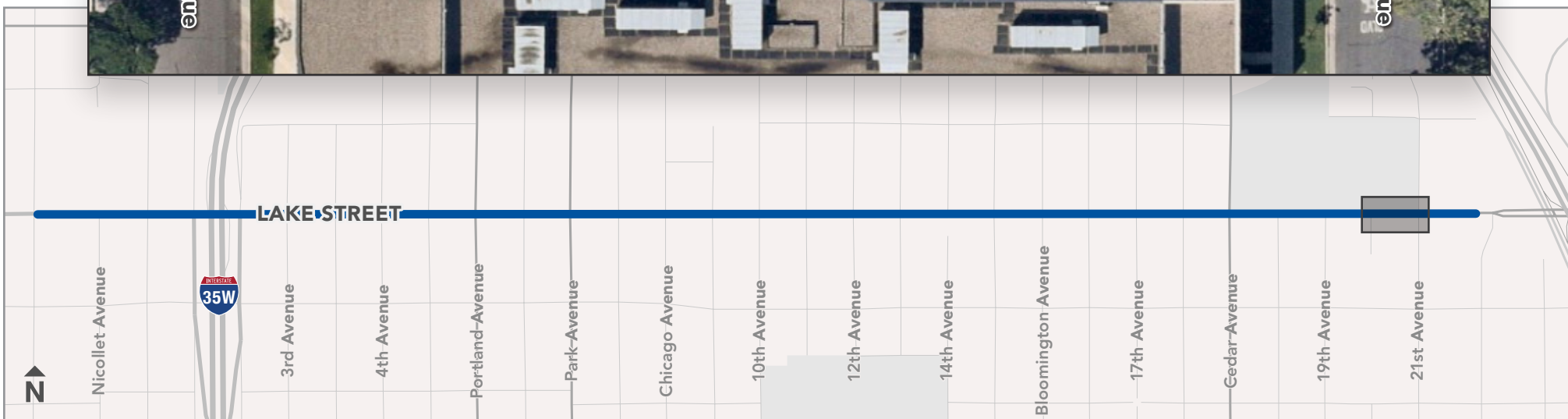
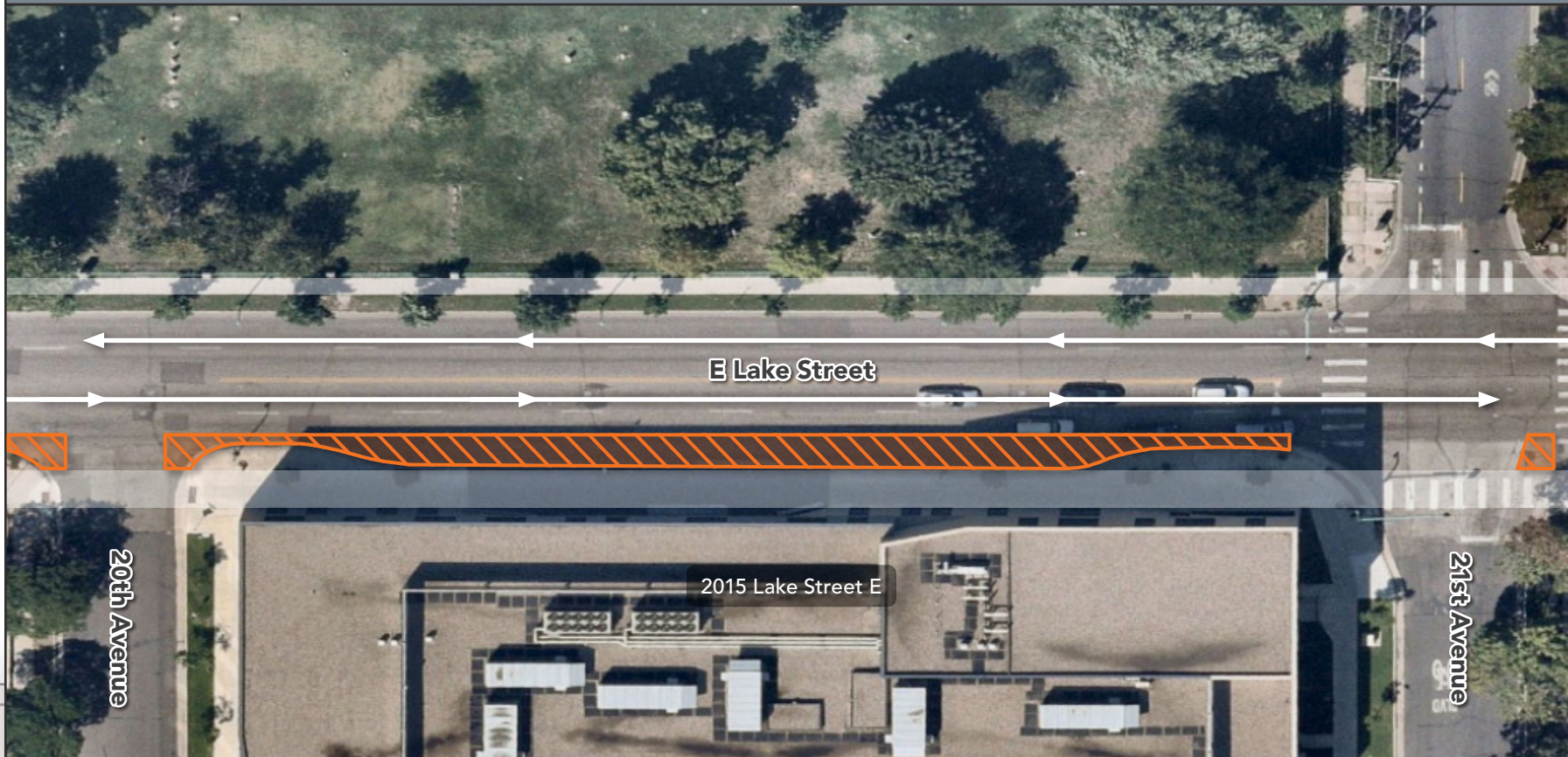
Legend:  Road Closure |  Direction of Traffic |  Existing Station Platform |  Station Platform to be Constructed



20th Avenue to 21st Avenue: Stage 1

🚧 South lanes and parking closed | Sidewalk and driveways open 🚧

Legend:  Road Closure |  Direction of Traffic |  Existing Station Platform |  Station Platform to be Constructed



20th Avenue to 21st Avenue: Stage 2

🚧 North lanes and parking closed | Sidewalk and driveways open 🚧

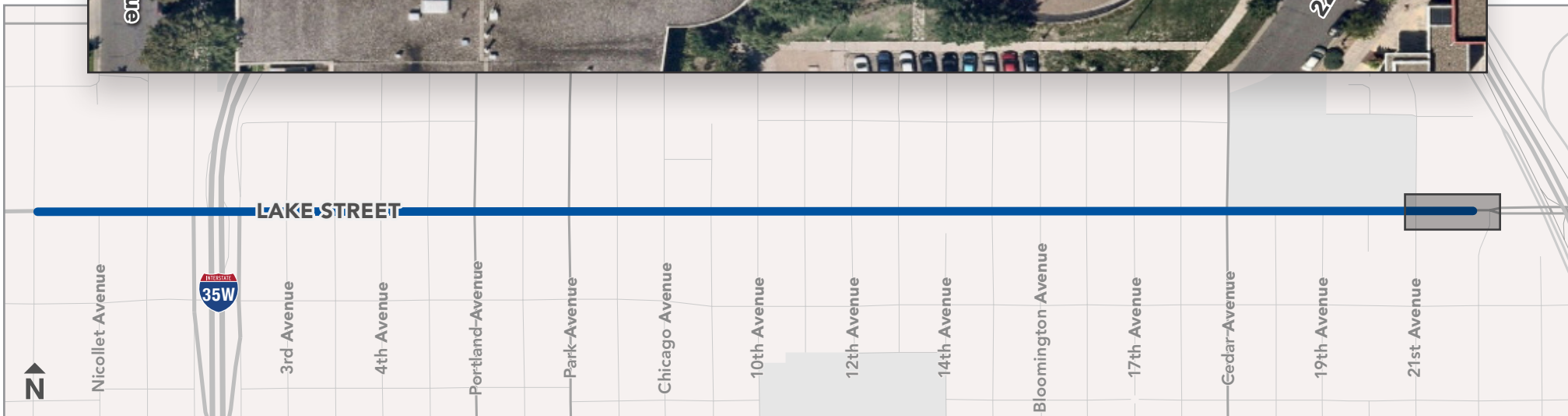
Legend:  Road Closure |  Direction of Traffic |  Existing Station Platform |  Station Platform to be Constructed



21st Avenue to 22nd Avenue: Stage 1

🚧 South lanes and parking closed | Sidewalk and driveways open 🚧

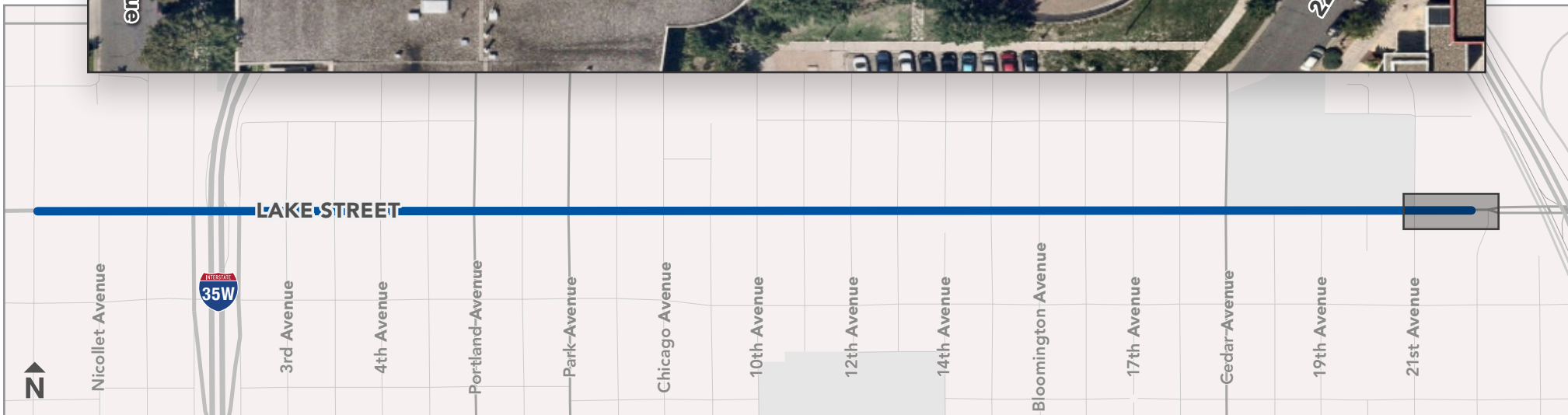
Legend:  Road Closure  Direction of Traffic  Existing Station Platform  Station Platform to be Constructed



21st Avenue to 22nd Avenue: Stage 2

🚧 North lanes and parking closed | Sidewalk and driveways open 🚧

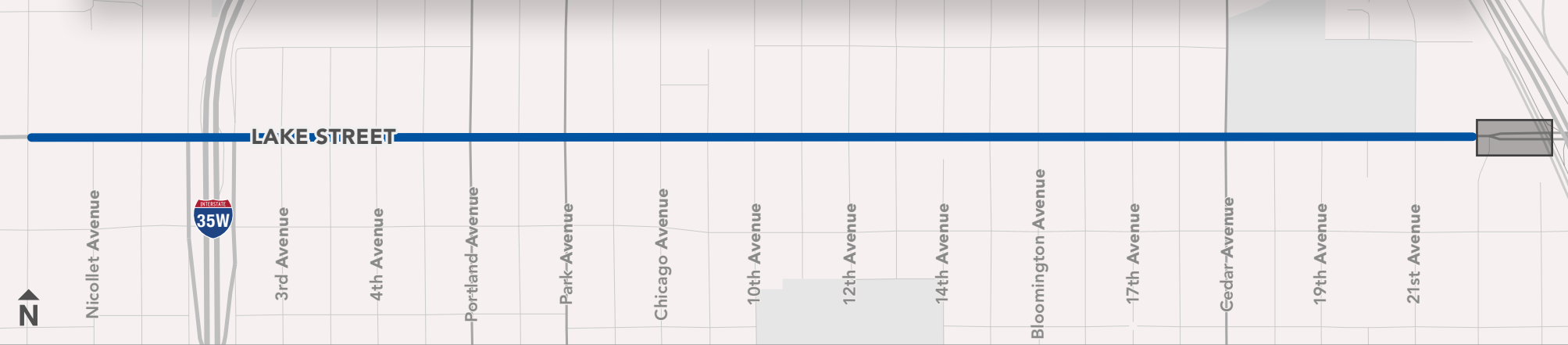
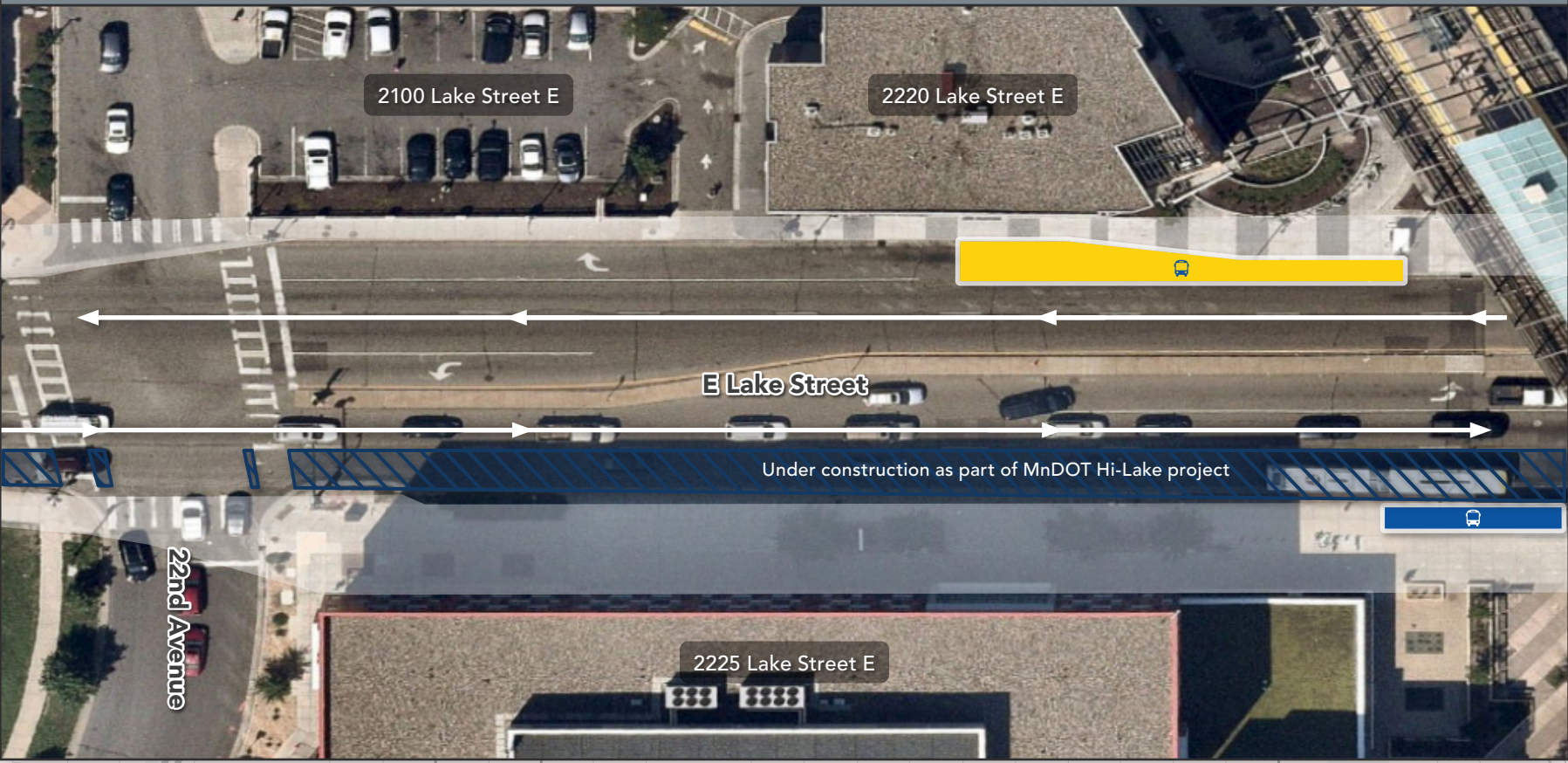
Legend:  Road Closure |  Direction of Traffic |  Existing Station Platform |  Station Platform to be Constructed



22nd Avenue to Lake Street Station: Stage 1

🚧 South lanes and parking closed | Sidewalk and driveways open 🚧

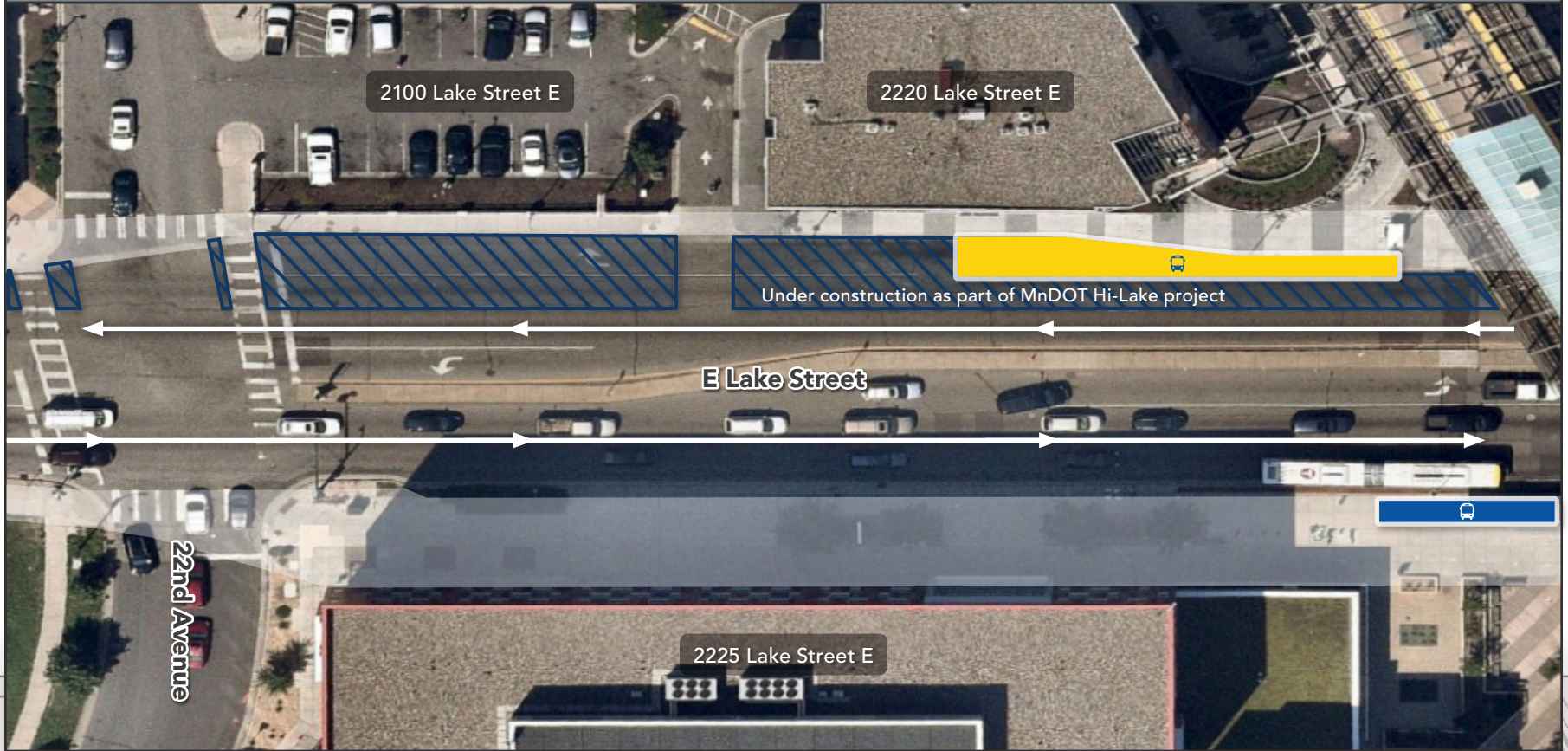
Legend:  Road Closure |  Direction of Traffic |  Existing Station Platform |  Station Platform to be Constructed



22nd Avenue to Lake Street Station: Stage 2

🚧 North lanes and parking closed | Sidewalk and driveways open 🚧

Legend:  Road Closure  Direction of Traffic  Existing Station Platform  Station Platform to be Constructed



Under construction as part of MnDOT Hi-Lake project

