

NetworkNOW Framework Executive Summary

MARCH 2025



[Network Now](#) is a vision for transit service that best meets the needs of our region through 2027. This framework guides improvements to grow ridership, enhance mobility, and meet travel needs.

The Network Now framework is designed to meet the needs of our customers and the communities that we serve today. The framework presented to the Metropolitan Council represents the region's top priorities for transit as represented in over 8,000 comments over multiple years, coupled with policy guidance, and technical evaluation.

A set of principles that was developed with our community guided decision-making.

Network Now Principles

Adapt	Adapt service to changes in transit markets and travel patterns.
Prepare	Prepare for new METRO and high-frequency routes.
Maintain	Maintain the reliability of our scheduled service consistently over time.
Build on success	Build on success to grow ridership adding service where people use transit the most.
Provide access	Provide access to opportunities and services with a focus on advancing equity and reducing regional disparities.

Changes made due to feedback from engagement for the concept plan

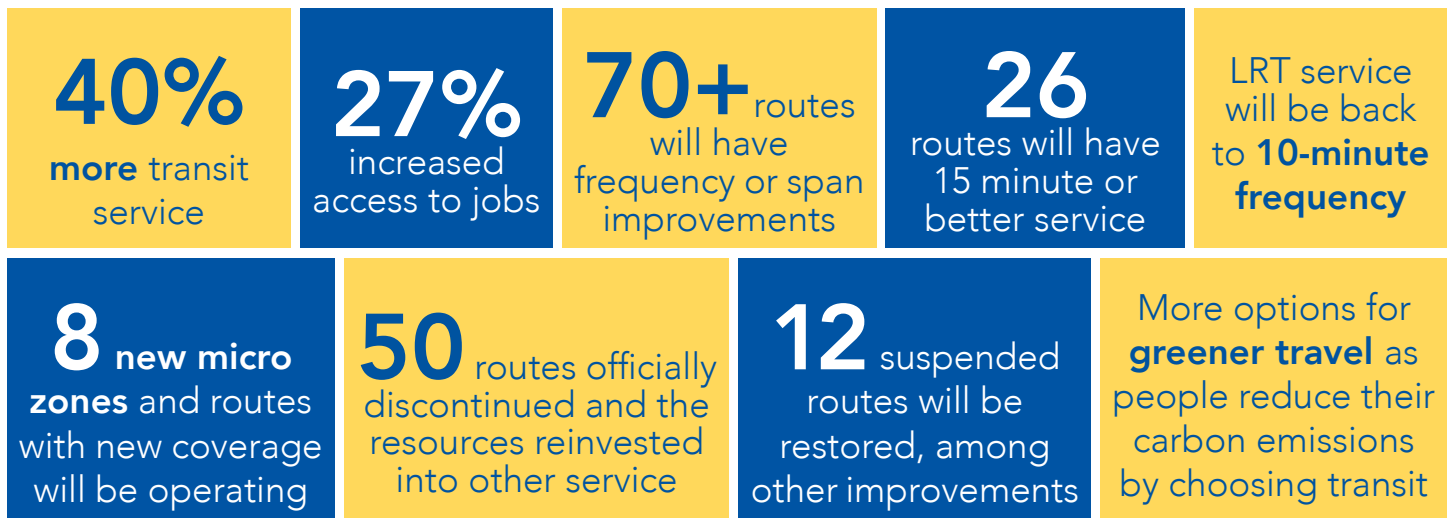
Changes from the concept plan include:

- Frequency improvements on 48 routes.
- Restoration of seven routes.
- Significantly new coverage on three routes.

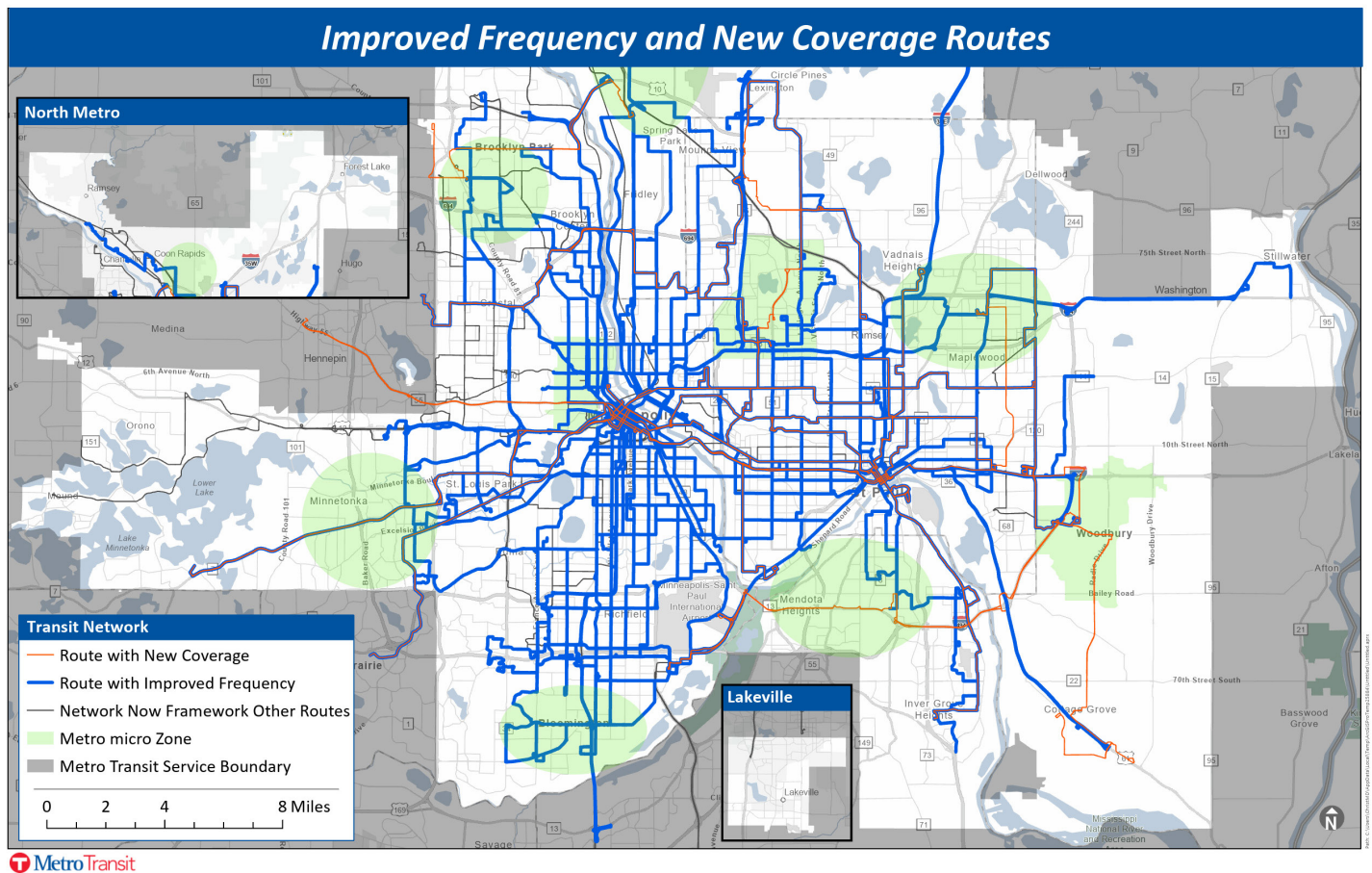
These modifications support the Network Now guiding principles and respond to the public comment period feedback in a variety of ways, including:

- Additional METRO lines and frequency improvements are ways to make investments in existing markets that already demonstrate strong ridership.
- More consistent mid-day service on the Key Express Network routes provides additional opportunities for travel outside the rush hour between downtown Minneapolis and some suburban areas.
- The frequency changes provide more service and improve transfer connections.
- Span of service improvements will benefit customers wanting to travel in the early morning and late-night hours.
- Modified route restructurings will make suburb-to-suburb trips easier.

When all the improvements in the Network Now framework are operating the Twin Cities will have:



Improved Frequency and New Coverage Routes



Metro Transit will transition toward implementing the Network Now framework. This includes making changes to reflect discontinued service such as removing signs, closing park-and-rides, and updating systems maps. It also includes implementing improved service and continuing to prepare for our METRO projects in development.

We thank our customers and communities for helping us develop this framework. We hope to see you on our transit system soon.