



## APPENDIX G. JOHNSON PARKWAY CROSSING ENGAGEMENT SUMMARY



# Johnson Parkway Public Engagement Summary

June 2024–July 2024

9/27/2024

# TABLE OF CONTENTS

- 1. Introduction ..... 1**
- 2. Engagement Methods..... 2**
  - 2.1. Community Events and Meetings..... 2**
    - 2.1.1 Stakeholder and District Council Meetings..... 2
    - 2.1.2 Canvassing..... 2
    - 2.1.3 Open House..... 3
  - 2.2. Materials..... 3**
    - 2.2.1 Handout ..... 3
    - 2.2.2 Survey..... 3
    - 2.2.3 Notices ..... 4
- 3. Feedback Results and Themes..... 5**
  - 3.1. Johnson Parkway Crossing Options Survey ..... 5**
  - 3.2. Ice Cream Social Open House Feedback..... 6**
  - 3.3. Canvassing Feedback ..... 7**
    - 3.3.1 Resident Canvassing..... 7
  - 3.4. Stakeholder and District Council Feedback ..... 7**
    - 3.4.1 District 4 Council–Dayton’s Bluff Community..... 7
    - 3.4.2 Elim Church ..... 7
    - 3.4.3 District 2 Council–Greater East Side Community Council ..... 8
    - 3.4.4 Wakan Tipi Awanyankapi..... 8
    - 3.4.5 Hmong Village ..... 9
    - 3.4.6 Realife Cooperative of Phalen Village..... 9
    - 3.4.7 Duluth and Case Recreation Center ..... 10
    - 3.4.8 District 5 Council–Payne–Phalen Community..... 10
- Appendix A. Project Handouts..... 13**
- Appendix B. Project Notices..... 14**
- Appendix C. Project Survey ..... 15**

**FIGURES**

Figure 1: Project staff at Johnson Parkway pop-up event..... 1

Figure 2: Johnson Parkway Crossing survey ..... 3

Figure 3: Spanish flyer advertising Johnson Parkway ice cream social..... 4

Figure 4: Letter from District 5 council members ..... 12

# 1. INTRODUCTION

Between June 2023 and July 2024, METRO Purple Line Bus Rapid Transit (BRT) project staff conducted engagement with the public, including residents, workers, business owners, and other stakeholders, to share Johnson Parkway Crossing design options for the White Bear Avenue Corridor, as a part of the Route Modification Study (RMS) Phase II. The White Bear Ave Corridor options involve BRT operating along Maryland, White Bear, and Beam avenues north of Cook Avenue Station to the Maplewood Mall area—as an alternative to co-locating BRT along the Bruce Vento Regional Trail, north of Maryland Avenue.

The goals and objectives of this engagement period included:

- Sharing general project information to inform the public about the project.
- Sharing updates on the RMS Phase II
- Informing the public and soliciting feedback about Johnson Parkway Crossing design options

Engagement methods included presenting at in-person meetings and tabling at community events; pop-up tabling at businesses and institutions; canvassing along the corridor; meetings with key stakeholders; conducting online and paper surveys; distributing handouts, display boards, and other translated materials; and communicating updates through the project website, social media, and email newsletters. Project staff reached approximately 500 to 600 people.

Project staff informed and received feedback from community groups, business representatives, municipal committees, organizations, corridor residents, municipal staff, elected officials, and other project partners.

This engagement summary report summarizes the engagement methods implemented, and the feedback received.



FIGURE 1: PROJECT STAFF AT JOHNSON PARKWAY POP-UP EVENT

## 2. ENGAGEMENT METHODS

This section outlines the approach and strategies implemented to gather input, insights, and feedback from community members, businesses, and stakeholders. Below, we provide an overview of the key elements and steps involved in our approach to engaging with the community.

### 2.1. Community Events and Meetings

Throughout June-July 2024, project staff attended various community meetings and open houses, as well as canvassed neighborhoods to inform the public and collect feedback on Johnson Parkway Crossing design options for the White Bear Ave Corridor, through the following:

#### 2.1.1 Stakeholder and District Council Meetings

Staff engaged with formal municipal, community organization, and project-hosted committees during this engagement period. Presentations to community organizations are listed below. These presentations discussed the Johnson Parkway Crossing design options, the project schedule, and any relevant RMS Phase II updates.

- Tuesday, Jun. 4 | 12:30–2:30 p.m. | District Council 4–Dayton’s Bluff Community
- Thursday, Jun. 6 | 12:30–2:30 p.m. | Elim Church
- Friday, Jun. 7 | 12:30–2:30 p.m. | District Council 2–Greater East Side
- Tuesday, Jun. 11 | 12:30–2:30 p.m. | Wakan Tipi Awanyankapi
- Wednesday, Jun. 12 | 4:30–6:30 p.m. | Hmong Village
- Friday, Jun. 14 | 12:30–2:30 p.m. | Realife Coop
- Tuesday, Jun. 18 | 12:30–2:30 p.m. | Duluth and Case Recreation Center
- Tuesday, Jun. 25 | 12:30–2:30 p.m. | District Council 5–Payne-Phalen Community

#### 2.1.2 Canvassing

Staff conducted door-knocking of residential areas and apartment buildings to spread awareness about the project, share information on Johnson Parkway Crossing design options, and invited residents to an Ice Cream Social held at Elim Church. Staff left behind flyers if no one answered.

- Wednesday, Jun. 12 | Mechanic Ave., Ames Ave., Etna St., Prosperity Ave St. Paul: 17 people
- Thursday, Jun. 13 | Magnolia Ave., Cook Ave., Atlantic St., Duluth St., Frank St., Earl St., St. Paul: 18 people
- Thursday, Jun. 20 | Rose Ave., Geranium Ave., Jessamine Ave., Earl St., Burnquist St., St. Paul: 15 people

- Friday, Jun. 21 | Burnquist St., Lane Pl., Rose Ave., Geranium Ave., Frank St., Duluth St., St. Paul: 15 people
- Tuesday, Jun. 25 | Lason Ave., Jenks Ave., and Case Ave., Duluth St., Earl St., Frank St., St. Paul: 5 people

### 2.1.3 Open House

Project staff hosted an Ice Cream Social open house at the end of June. This open house was held in a location convenient to residents along the corridor near Johnson Parkway, at Elim Church. The open house shared updates on RMS Phase II, Johnson Parkway Crossing design options, schedule updates, and solicited feedback from residents.

- Thursday, Jun. 27 | 6–8 p.m. | Elim Church: 40 Attendees

## 2.2. Materials

A variety of resources were created to inform the public and solicit feedback, including handouts, display boards, notices, property impact letters, comment form, and webpage content.

### 2.2.1 Handout

#### Factsheet

Project Staff developed a factsheet handout for the Johnson Parkway Crossing design options. The handout included background on the Purple Line BRT project, descriptions of the three Johnson Parkway Crossing design options, ways to provide feedback, and how to stay connected. The factsheet was translated in Spanish, Somali, Hmong, and Karen.

The factsheet is provided in Appendix A.

### 2.2.2 Survey

Staff implemented a survey to solicit feedback on the Johnson Parkway Crossing design options. Participants were asked to select their top option for the reconsideration of the Johnson Parkway Crossing and provide an explanation for their preference.

The Johnson Parkway Crossing design options included Cook Avenue extension options, close Magnolia access option, and modified Magnolia access option.

The comment form is hosted online with SurveyMonkey and was translated into Spanish.



**FIGURE 2: JOHNSON PARKWAY CROSSING SURVEY**

The comment form is available in Appendix C.

### 2.2.3 Notices

#### Flyers

Staff developed a flyer advertising the Johnson Parkway Crossing design options ice cream social open house. It provided location and time, images Purple Line BRT corridor map, project contact information, and a QR code to visit the project website for the latest information and an opportunity to share feedback. The flyer was translated in Spanish, Hmong, and Karen.

The flyers are available in Appendix B.



FIGURE 3:SPANISH FLYER ADVERTISING JOHNSON PARKWAY ICE CREAM SOCIAL



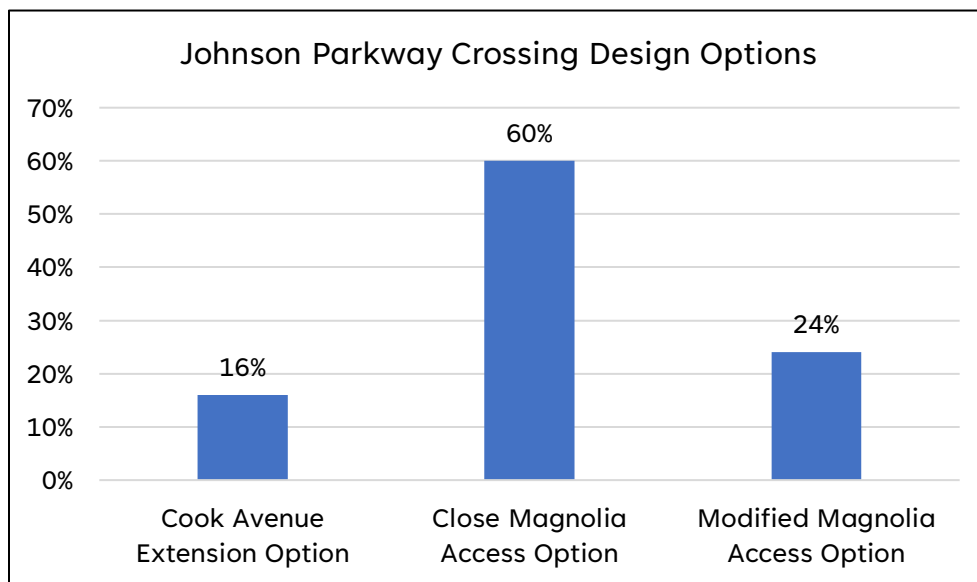
### 3. FEEDBACK RESULTS AND THEMES

This section presents the feedback staff have received from the public through the engagement methods described above. Feedback is grouped by feedback and comments received regarding the Johnson Parkway Crossing design options from the June–July 2024 community events, comments from the resident canvassing, and stakeholder meetings.

#### 3.1. Johnson Parkway Crossing Options Survey

This section describes the results of the Johnson Parkway Crossing design options survey described in Section 2.2.2. The survey was open from June 12 through July 23, 2024, and project staff received 28 responses.

TABLE 1: JOHNSON PARKWAY CROSSING DESIGN OPTIONS SURVEY RESULTS



Survey respondents were also asked why they selected their design option preference. Below are common themes based on design preference

##### Cook Avenue Extension Option

Respondents that chose this option felt it would be safer from Hmong Village and pedestrians crossing at Phalen Boulevard, it would facilitate better transportation and seemed to provide overall better options and access for the community.

##### Close Magnolia Access Option

Those who chose this option stated they felt it seemed the safest and most effective option, didn't think the Magnolia Avenue to Johnson Parkway was heavily used, had fewest stop lights, would be the fastest option for buses, would be less disruptive to the existing neighborhood and green space, and seemed most feasible. One respondent felt that this option would prevent children from being able to enjoy being outside in their neighborhoods and another felt the Purple Line BRT is not necessary.

### **Modified Magnolia Access Option**

Respondents that chose this option stated they wish to maintain current traffic patterns in the neighborhood, seemed to be the safest option, did not want more traffic through Burnquist Street. Of the six community members that selected this option, all but one pointed out they would prefer the original plan from 2017 or that they did not want the Purple Line BRT at all.

### **Other Responses**

Three community members did not select an option but provided feedback that included lack of support for any Johnson Parkway Crossing design options and Purple Line BRT as a whole, preference to stick with the original design option that includes the bridge over Johnson Parkway, and that a safer crossing to Hmong Village would be to open Cook Avenue.

## **3.2. Ice Cream Social Open House Feedback**

At the June 27 Ice Cream Social open house, project staff engaged with about 40 community members that were in attendance. A common theme included general opposition to changes to traffic patterns in the neighborhood. Many residents expressed concerns over existing traffic issues and did not see the options as an improvement. A few community members expressed that they would like to have seen a detailed traffic analysis and proposed neighborhood mitigation measures with these options. Most were not opposed to Purple Line BRT but were opposed to anything that changed traffic patterns in the neighborhood. If the original bridge option was still available, many said they would support that.

There were also concerns over safety/operation at the intersection of Johnson Parkway, with Maryland Avenue, and uncertainty on how a new signal would work on Johnson Parkway since the intersection with Phalen Boulevard backs up to Maryland Avenue today. Other common concerns included taking green space to create a new roadway connection, how larger traffic flow has the potential to impact safety, closing off Magnolia completely.

Project staff brought Johnson Parkway Crossing design options roll plots for community members to leave comments. Below are common themes from residents:

### **Close Magnolia Access Option**

- No, Magnolia access is essential
- No left turns at Duluth St. or Burnquist St. due to safety concerns

### **Modified Magnolia Access Option**

- Suggestion for streetlight

- Not ideal for neighborhood
- Support if signal was timed properly

### **Cook Avenue Extension Option**

- No, Magnolia access is essential
- Dangerous intersection at Magnolia Ave.
- Extension of Cook Ave. is unhelpful and potentially a dangerous intersection at Magnolia

### **Original Bridge Option**

- Better than other options
- Supportive of no traffic changes
- Safer for traffic and pedestrians/children in the neighborhood

## **3.3. Canvassing Feedback**

### **3.3.1 Resident Canvassing**

Residential canvassing entailed door-knocking in multi-family buildings or public housing complexes. Staff conducted about 70 conversations and left Johnson Parkway crossing design options flyers at about 400 houses in the residential canvassing effort. There was varying levels of project awareness; however, most people supported the project. Most people we spoke to were transit users. People were appreciative of the design and the increased transit service they will have, as well as project staff efforts to canvass in the neighborhoods.

Many concerns that were shared with project staff included increased traffic, safety of children in the neighborhood due to the potential increase of traffic, noise levels, and crime.

## **3.4. Stakeholder and District Council Feedback**

### **3.4.1 District 4 Council–Dayton’s Bluff Community**

**Meeting Date:** June 4, 2024

**Location:** East Side Enterprise Center

#### **Summary of Feedback Received:**

For District 4 Council, questions members had included square footage for the Cook Ave. Extension acquisition, how would construction impact residents and businesses, and in what ways would project staff inform and engage the public before, during, and after construction. Members of the council preferred the Close Magnolia Access option.

### **3.4.2 Elim Church**

**Meeting Date:** June 6, 2024

**Location:** Elim Church

**Summary of Meeting and Feedback Received:**

For the church, the Cook Avenue Extension was their preferred option citing the following reasons:

- Existing conditions are dangerous to cross over at Hmong village and for the church.
- Sometimes the apartment residents park in the church parking lot. likes the idea of added street parking on the new roads to help with traffic buildup. Have had issues with residents in the area parking at the church parking lot.

The church expects a 10% increase in vehicle traffic over the next few years. Congregants come from St. Paul, Cottage Grove, East Side, and Minneapolis. The second option the church liked was the Modified Magnolia Access option. They did not see an issue with the mixed traffic buses if the road is wider. The church stated a main issue was to preserve the door access to Magnolia Avenue and the loop on Magnolia Avenue for their congregation. The loop is used for funerals, and they would like to have more length on the Magnolia Avenue to maintain the loop. Other concerns include loitering and drug use near the church with a station nearby. In the future, they would like to put a fence when the Purple Line BRT is completed.

### 3.4.3 District 2 Council–Greater East Side Community Council

**Meeting Date:** June 7, 2024

**Location:** 1365 Prosperity Avenue, St. Paul, MN

**Summary of Feedback Received:**

Project staff met with District 2 Council Executive Director Lisa Theis and Board Chair Ianni Houmas. Lisa and Ianni were both in favor of the Cook Avenue Extension option. Ianni was also in favor of the Close Magnolia Access option. They were happy to hear of our ongoing and upcoming engagement overall, especially with Elim Church as well as the other District Councils.

### 3.4.4 Wakan Tipi Awanyankapi

**Meeting Date:** June 11, 2024

**Location:** 332 Minnesota Street, St. Paul, MN; Microsoft Teams

**Summary of Feedback Received:**

Purple Line staff met with Gabby Menomin to follow-up on at-grade design options for the Johnson Parkway/Phalen Blvd area and share the final options that the project planned to go out for public engagement on. Gabby shared that Wakan Tipi would like to daylight in the same area as the Cook Avenue Extension option (greenspace SPRWS property), which is at a 10% design (see further details from below email). Confirmed that the portion of Creek daylighting off of Johnson Parkway and Maryland Avenue that is at 60% design, is not impacted by the Close Magnolia Access and Modified Magnolia

options. Gabby was going to share designs from the meeting with Interfluve and follow-up with further questions and feedback.

Gabby was present at the June 25 District 5 board meeting and expressed concerns about the Cook Avenue Extension option, that it would directly impact the ability to daylight the Creek and there would not be room for both projects.

Additionally, prior to this meeting there was email correspondence with Gabby and Maren Hansell, Senior Water Resources Engineer with Interfluve, also working with Wakan Tipi Awanyankapi on daylighting the Phalen Creek.

Email from Maren:

I agree it would be great to meet sooner than later. We have been working with Amrish and Kimley Horn on coordination for these projects for about 2 years, but this area hasn't been discussed in detail relative to the Purple Line alternatives. I believe last time we talked about the Johnson tie-in we understood that one alternative included a crossing of the parcel in question at Magnolia, but not running north south on the parcel in question.

Our project is only at 10% design for reaches downstream of Jessamine and further design has not been funded. This is one of the tightest corridors for us and there are several constraints (e.g. crossing a stormwater Beltline, the sanitary sewer that occupies that corridor, grades etc.) and unknowns. However, our 10% concept does have the creek corridor running roughly along the alignment below. At this point, we recognize that portions of this reach may need to be piped, but our goal would be to have a surface water channel throughout the corridor.

### 3.4.5 Hmong Village

**Meeting Date:** June 12, 2024

**Location:** Hmong Village Shopping Center, 1001 Johnson Parkway, St. Paul, MN

#### **Summary of Feedback Received:**

Project staff met with Hmong Village representatives to share Johnson Parkway Crossing design options. Those in attendance preferred the Cook Avenue Extension design option because it adds a signal for access to the parking lot. Safety concerns were addressed since many vendors live in the apartments across Phalen Boulevard and cross to get to the mall. There were also concerns with the Cook Avenue Extension options regarding about people parking in the Hmong Village parking lot to use the bus during peak hours during the day. The representatives were not worried about the other options as they do not have a large effect on the Hmong Village.

### 3.4.6 Realife Cooperative of Phalen Village

**Meeting Date:** June 14, 2024

**Location:** Realife Cooperative of Phalen Village, 1355 Phalen Boulevard., St. Paul, MN

### **Summary of Feedback Received:**

Project staff meet with 25 residents at Realife Cooperative of Phalen Village to share Johnson Parkway Crossing design options and solicit feedback. There was an overwhelming amount of opposition of the Bruce Vento Trail corridor and Johnson Parkway bridge option, with some support of the White Bear Ave Corridor. Residents also opposed an extension/connect to the Bruce Vento trail because many believed there isn't enough separation between the trail and guideway so they wouldn't feel safe walking. Many were not supportive of changes to Magnolia Avenue due to construction of the guideway. Residents expressed concern about vibration from bridge construction and potential impacts to structural integrity of the building due to vibration from bridge construction. Residents asked project staff questions about updated ridership, reasoning behind station locations, coordination with Elim Church, and requested for more frequent engagement as a building.

Project staff brought comment cards to the meeting. Below are common themes:

- Preference for the White Bear Ave Corridor, not Bruce Vento Trail
- No raised bridge crossing; at grade option due to concerns regarding structural damage
- Concern regarding walkability along a bus route
- Understanding that even though many will not utilize the bus, construction of the Purple Line BRT will still impact them personally
- Support for preservation of green space and the Bruce Vento Trail

### **3.4.7 Duluth and Case Recreation Center**

**Meeting Date:** June 18, 2024

**Location:** 1020 Duluth Street, St. Paul, MN

#### **Summary of Feedback Received:**

Project staff met with Duluth and Case Recreation Center representatives to share design options and solicit feedback. There was a preference to have a connection to Palen Blvd and Cook Ave. Extension option.

### **3.4.8 District 5 Council–Payne–Phalen Community**

**Meeting Date:** June 25, 2024

**Location:** 567 Payne Avenue, St. Paul, MN

#### **Summary of Feedback Received:**

Project staff met with District 5 Council to share Johnson Parkway Crossing design options and solicit feedback from council members. Many members shared support for moving the Cook Avenue station and for the full signalized intersection at the adjusted Cook Avenue station location, as well as for safe pedestrian crossings across Phalen Boulevard. Members shared concerns regarding the new roadway

through SPRWS property with Cook Avenue Extension concept, space for Wakan Tipi's efforts to daylight the creek, taking green space to create a new roadway connection, larger traffic flow impacts and safety, and vehicle/bus interactions.

Two actions occurred after the meeting and District 5 Council members sent a follow-up letter with the board's actions and position. These actions included a lack of support for the Cook Avenue Extension option, the need for enhancements for a safer pedestrian crossing at Phalen Boulevard to the Cook Avenue station, and a request to have further engagement on the Close Magnolia and Modified Magnolia access options.

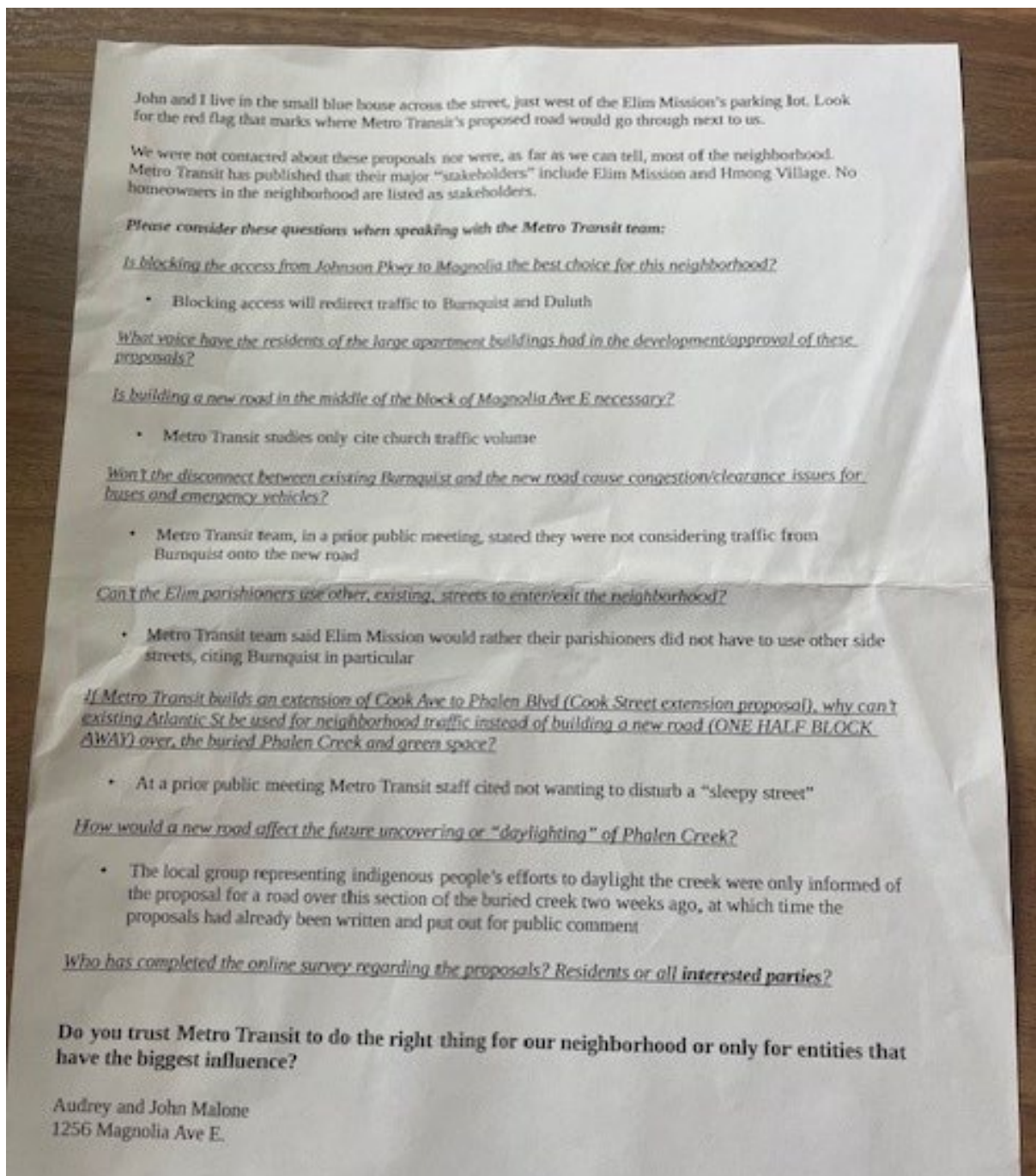


FIGURE 4: LETTER FROM DISTRICT 5 COUNCIL MEMBERS





## APPENDIX A. PROJECT HANDOUTS

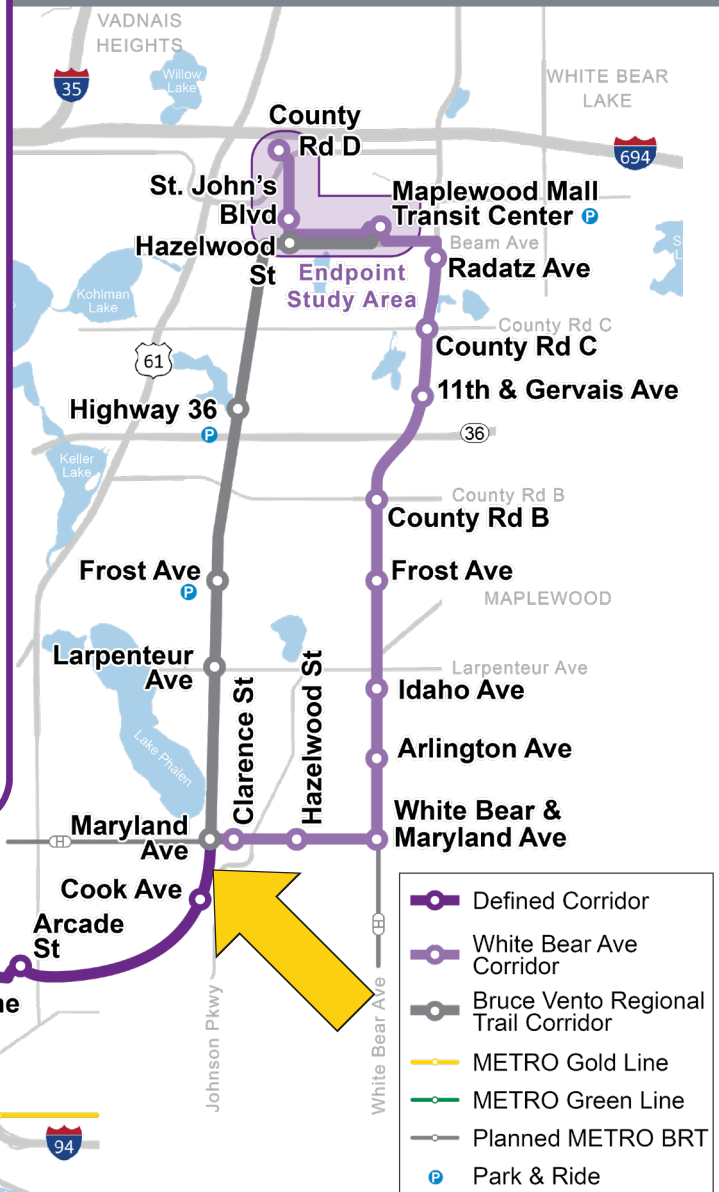
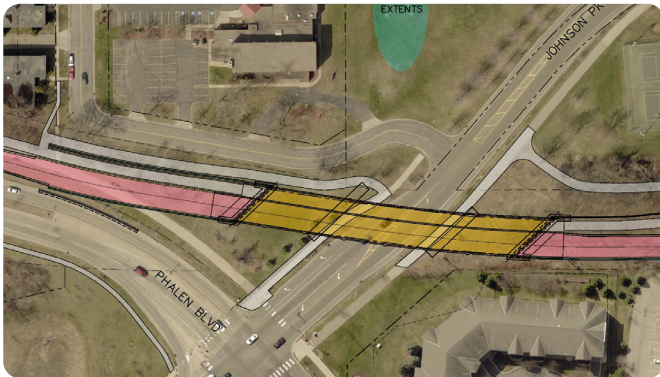
## WHAT IS THE PURPLE LINE BRT?

The Purple Line is a proposed bus rapid transit (BRT) line in Ramsey County that will connect with expanding light rail and BRT service of the METRO system. The line will increase accessibility to jobs, housing, and services, improving the appeal and competitiveness of the east metro area. Purple Line will be one of the region's first BRT lines to operate primarily in exclusive or semi-exclusive lanes, providing for a more reliable and faster transit trip. Project staff are studying Maryland and White Bear avenues as an alternate route to using the Bruce Vento Regional Trail Corridor. Project decisionmakers will determine if Purple Line runs in the White Bear Ave Corridor in fall 2024.

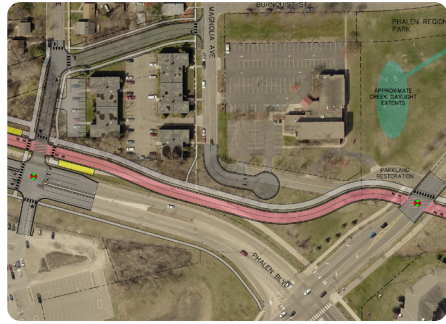
## JOHNSON PARKWAY CROSSING OPTIONS

Project staff are currently reconsidering the Johnson Parkway crossing design options for the Purple Line project in the White Bear Ave Corridor.

The previous design plans from 2017 (see image below) included a bridge over Johnson Parkway to connect to the Bruce Vento Trail. However, staff are now considering alternative options due to the reduced travel time savings when the Purple Line runs along Maryland Avenue in the White Bear Avenue Corridor.

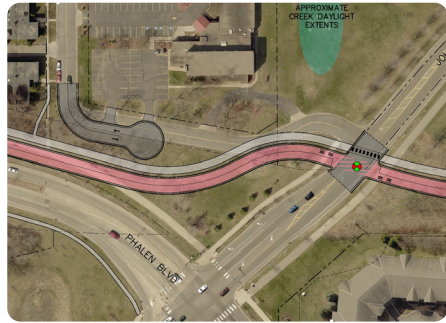


We are looking for community feedback on **3 new options** to help determine how Purple Line will cross Johnson Parkway.



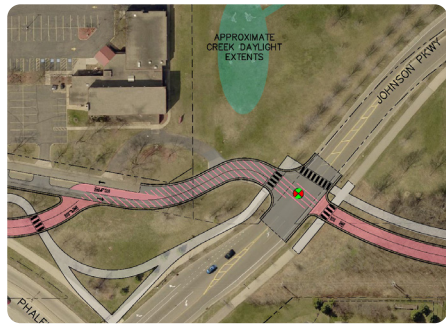
**Cook Ave Extension Option**

- Provides direct connection across Johnson Pkwy for trail users.
- Provides fast and reliable bus travel times.
- Provides safer traffic movements to Hmong Village and the Magnolia area with the new traffic signal.
- Changes access to the neighborhood by extending Cook Ave.
- Changes the parking lot of 1267 Cook Ave Apartments.
- Adds 2 new traffic signals in the area.
- Cook Avenue Station would shift north from its planned location to the new intersection at Cook Ave.



**Close Magnolia Access Option**

- Removes existing access between Magnolia Ave and Johnson Pkwy.
- Shifts traffic to Burnquist St and Duluth St for neighborhood access.
- Provides the fastest, most reliable route for buses
- Provides one new traffic signal in the area, only for bus and trail crossings.



**Modified Magnolia Access Option**

- Increases the number of potential conflict points between general traffic, pedestrians, and buses.
- Existing access between Magnolia Ave and Johnson Pkwy is maintained. No neighborhood access or traffic changes.
- Provides the slowest, least reliable route for buses.
- Adds one new traffic signal.



**PROVIDE YOUR FEEDBACK**

- Tell us what design option for crossing Johnson Parkway you'd like to see advanced by **June 28**:
- Take a short online survey [surveymonkey.com/r/ZVSJGLB](https://surveymonkey.com/r/ZVSJGLB)
- Join us at a community ice cream social on Thursday, June 27 from 6-8 p.m. at Elim Church's Upper Parking Lot (1275 Magnolia Ln, St Paul, MN 55106)
- Call or email us at **612-618-0495** or [colin.owens@metrotransit.org](mailto:colin.owens@metrotransit.org)

*If you are interested in having Purple Line staff come to your neighborhood group, community organization, business, or event, please reach out.*

**STAY CONNECTED**



Sign up for email updates:  
[metrotransit.org/purple-line](https://metrotransit.org/purple-line)



Call us:  
612-618-0495



Email us:  
[purpleline@metrotransit.org](mailto:purpleline@metrotransit.org)



Follow us:  
[@PurpleLineBRT](https://twitter.com/PurpleLineBRT)

**If you need this information in an alternative format or language, contact:**

Si necesita esta información en un formato o idioma alternativo, póngase en contacto con:  
Yog koj xav tau cov lus no txhais uas lus hmoob lossis xav tau ib tus neeg pab txhais cov lus no rau koj, tiv tauj:

Haddii aad dooneyso in aad macluumaadkan ku hesho siyaabo kale ama afaf kale, la xiriir:  
နမ့်သးအိညို : နွါဘဉ်တၢ်စ့တၢ်ကျိတဖဉ်အံၤလၢတၢ်ခံမံၤအကျါလၢတၢ်ကယုထၢတံၤအံၤအနီၤမ့တမ့ၢ်ကျိၣ်.ဆဲးကျါ

**Colin Owens**  
Community Outreach  
Coordinator  
612-618-0495  
[colin.owens@metrotransit.org](mailto:colin.owens@metrotransit.org)

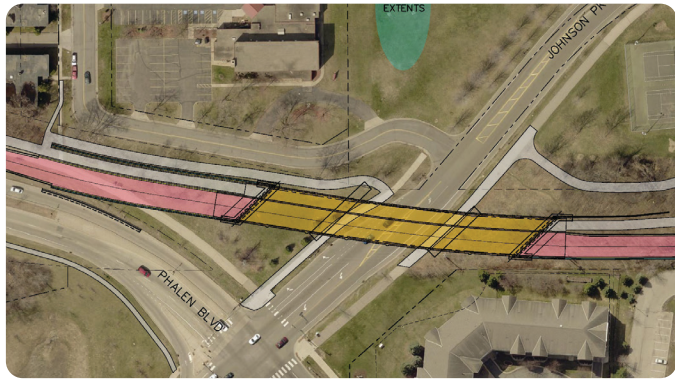
**PURPLE LINE BRT (BRT TXOJ KEV XIM NTSHAV) YOG DAB TSI?**

Lub Khoos Kas Txoj Kev Xim Ntshav yog lub khoos kas lab npauv kev thauj khoom nrog lub tshab npav (BRT) hauv Cheeb Tsam Nroog Ramsey uas yuav txuas nrog kev nthuav dav tshab ciav hlau thiab BRT tab tom nthuav dav lab npauv METRO. Txoj kev no yuav ua rau kom muaj kev nkag mus tau rau kev ua hauj lwm, vaj tse, thiab kev pab cuam, txhim kho kev thov kom rov txiav txim dua thiab kev sib tw ntawm thaj chaw tshab ciav hlau qab av nyob sab hnub tuaj. Txoj Kev Xim Ntshav yuav yog ib txoj kev ntawm cheeb tsam thawj txoj kev BRT uas qhib muab kev pab cuam hauv txoj kev tshwj xeeb los sis tshwj xeeb ib nrab yog qhov tseem ceeb, pab kom kev taug kev nrog lub lab npauv thauj khoom rau pej xeem uas muaj kev ntseeg siab thiab nrawm dua. Cov neeg ua hauj lwm hauv lub khoos kas tab tom kawm txoj kev Maryland thiab White Bear uas yog ib txoj hauv kev rau kev siv Txoj Kev Taug Bruce Vento Regional Trail. Cov neeg muaj hwj chim txiav txim siab txog lub khoos kas yuav txiav txim siab seb Txoj Kev Xim Ntshav puas khiav hauv Txoj Kev Taug Ntawm Txoj Kev White Bear thaum lub caij nplooj zeeg xyoo 2024.

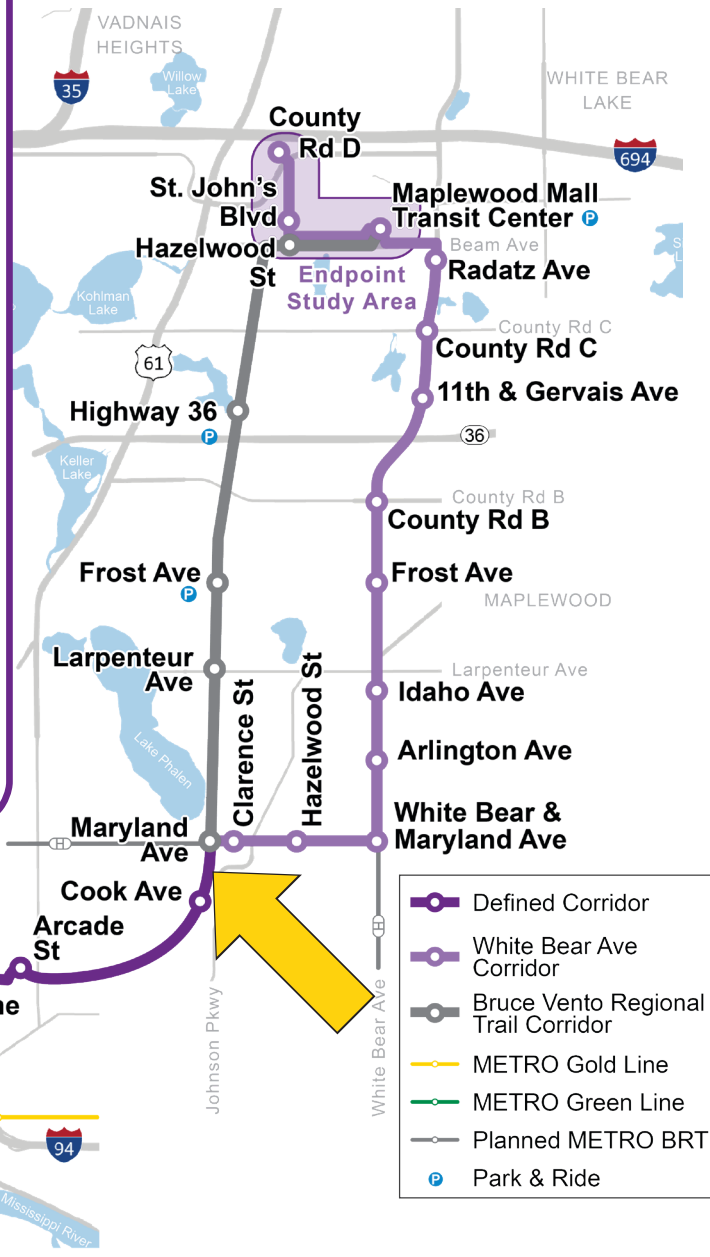
**COV KEV XAIV RAU KEV SIB TSHUAM NTAWM JOHNSON PARKWAY**

Tam sim no cv neeg ua hauj lwm hauv lub khoos kas tab tom rov xav txog cov kev xaiv rau kev tsim qauv cov kev sib tshuam ntawm Johnson Parkway rau lub khoos kas Txoj Kev Xim Av hauv Txoj Kev Taug Ntawm Txoj Kev White Bear.

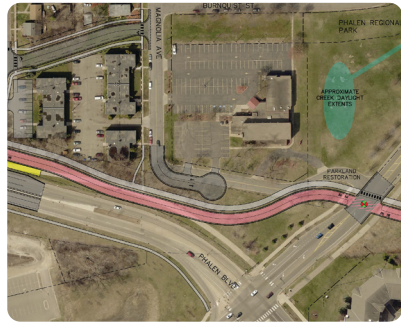
Cov phiav xwm tsim qauv yav dhau los thaum xyoo 2017 (saib duab hauv qab) suav nrog tus choj hla Johnson Parkway txuas mus rau Bruce Vento Trail. Txawm li cas los xij, tam sim no cov neeg ua hauj lwm tab tom txiav txim siab cov kev xaiv lwm txoj hauv kev vim tias tau txo qis kev txuag lub sij hawm mus ncig thaum Txoj Kev Xim Ntshav khiav ntawm Txoj Kev Maryland hauv Txoj Kev Taug Ntawm Txoj Kev White Bear.



Peb tab tom nrhiav kev tawm tswv yim hauv zej zog ntawm **3 txoj kev xaiv tshiab** los pab txiav txim siab txoj hauv kev uas Txoj Kev Xim Ntshav yuav hla Johnson Parkway.

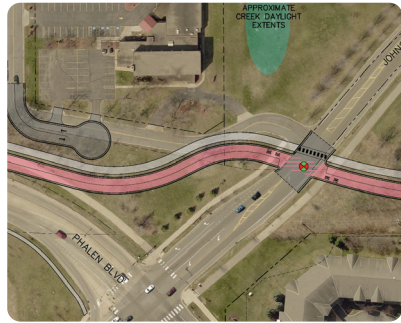


- Defined Corridor
- White Bear Ave Corridor
- Bruce Vento Regional Trail Corridor
- METRO Gold Line
- METRO Green Line
- Planned METRO BRT
- Park & Ride



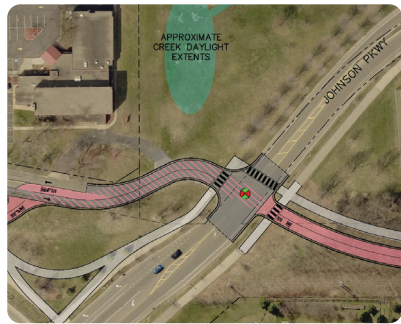
**Qhov Kev Xaiv Nthuav Dav Ntxiv Ntawm Txoj Kev Cook**

- Muab kev sib txuas ncaj qha hla Johnson Pkwy rau cov neeg siv taug txoj kev.
- Muab sijhawm taug kev nrog kev caij tsheb npav uas ceev thiab ntseeg siab tau.
- Ntxiv kev nyab xeeb rau tsheb khiav mus rau Lub Zos Hmoob thiab thaj chaw Magnolia nrog cov xam nyas teeb liab tsheb tshiab.
- Hloov kev nkag mus tau rau hauv zej zog los ntawm kev nthuav dav Txoj Kev Cook.
- Hloov chaw nres tsheb ntawm Cov Chav Tsev Xauj Ntawm Txoj Kev 1267 Cook Ave.
- Ntxiv 2 lub xam nyas teeb liab tshiab hauv thaj chaw.
- Qhov Chaw Nres Tsheb Ntawm Txoj Kev Cook yuav hloov mus rau sab qaum teb ntawm nws qhov chaw uas tau npaj mus rau txoj kev sib tshuam tshiab ntawm Txoj Kev Cook.



**Kaw Qhov Kev Xaiv Nkag Mus Tau Rau Magnolia**

- Tshem tawm kev nkag mus uas twb muaj lawm ntawm Txoj Kev Magnolia thiab Johnson Pkwy.
- Hloov kev khiav tsheb mus rau Txoj Kev Burnquist thiab Txoj Kev Duluth rau kev nkag mus tau rau hauv zej zog.
- Muab kev pab cuam txoj kev taug tsheb npav uas ceev tshaj plaws thiab ntseeg siab tshaj plaws
- Muaj cov xam nyas lub teeb liab tsheb khiav tshiab nyob rau hauv cheeb tsam, tsuas yog qhov chaw hla rau tsheb npav thiab txoj kev.



**Qhov Kev Xaiv Nkag Mus Tau Rau Magnolia Uas Tau Hloov Kho**

- Nce tus naj npawb ntawm cov ntsiab lus tsis sib haum xeeb ntawm cov tsheb khiav feem dav, cov neeg taug taw, thiab cov tsheb npav.
- Kev nkag mus uas twb muaj lawm ntawm Txoj Kev Magnolia thiab Johnson Pkwy tau txais kev tswj xyuas. Tsis muaj kev nkag mus rau hauv zej zog los sis kev hloov tsheb khiav.
- Muab kev pab cuam txoj kev taug tsheb npav uas qeeb tshaj plaws thiab ntseeg siab qis tshaj plaws.
- Ntxiv ib lub xam nyas teeb liab tsheb khiav tshiab.

**MUAB KOJ QHOV KEV TAWM TSWV YIM**

Qhia rau peb paub qhov kev xaiv rau kev tsim qauv txoj kev hla Johnson Parkway uas koj xav pom ua ntej **Lub Rau Hli Ntuj Tim 28:**

- Tteb qhov kev soj ntsuam hauv oos lais luv-luv [surveymonkey.com/r/ZVSJGLB](https://www.surveymonkey.com/r/ZVSJGLB)
- Koom nrog peb ntawm lub koom txoos ice cream hauv zej zog rau Hnub Thursday, Lub Rau Hli Ntuj 27 thaum 6-8 teev tsaus ntuj ntawm Qhov Chaw Nres Tsheb Sab Saum Toj Ntawm Elim Church (1275 Magnolia Ln, St Paul, MN 55106)
- Hu los sis email rau peb ntawm **612-618-0495** los sis [colin.owens@metrotransit.org](mailto:colin.owens@metrotransit.org)

*If you are interested in having Purple Line staff come to your neighborhood group, community organization, business, or event, please reach out.*

**STAY CONNECTED**



Sign up for email updates:  
[metrotransit.org/purple-line](https://metrotransit.org/purple-line)



Call us:  
612-618-0495



Email us:  
[purpleline@metrotransit.org](mailto:purpleline@metrotransit.org)



Follow us:  
[@PurpleLineBRT](https://www.facebook.com/PurpleLineBRT)



**If you need this information in an alternative format or language, contact:**

Si necesita esta información en un formato o idioma alternativo, póngase en contacto con:  
Yog koj xav tau cov lus no txhais uas lus hmoob lossis xav tau ib tus neeg pab txhais cov lus no rau koj, tiv tauj:

Haddii aad dooneyso in aad macluumaadkan ku hesho siyaabo kale ama afaf kale, la xiriir:  
နမ့်သးအိၣ်းန့ၣ်ဘၣ်တၢ်စ့ၢ်တၢ်ကျိၣ်တဖၣ်အံၤလၢတၢ်ခံၣ်အကျိၣ်လၢတၢ်ကယုၤထၢတံၢ်အံၤအနီၣ်မ့ၢ်တမ့ၢ်ကျိၣ်.ဆဲးကျဲ

**Colin Owens**  
Community Outreach  
Coordinator  
612-618-0495  
[colin.owens@metrotransit.org](mailto:colin.owens@metrotransit.org)

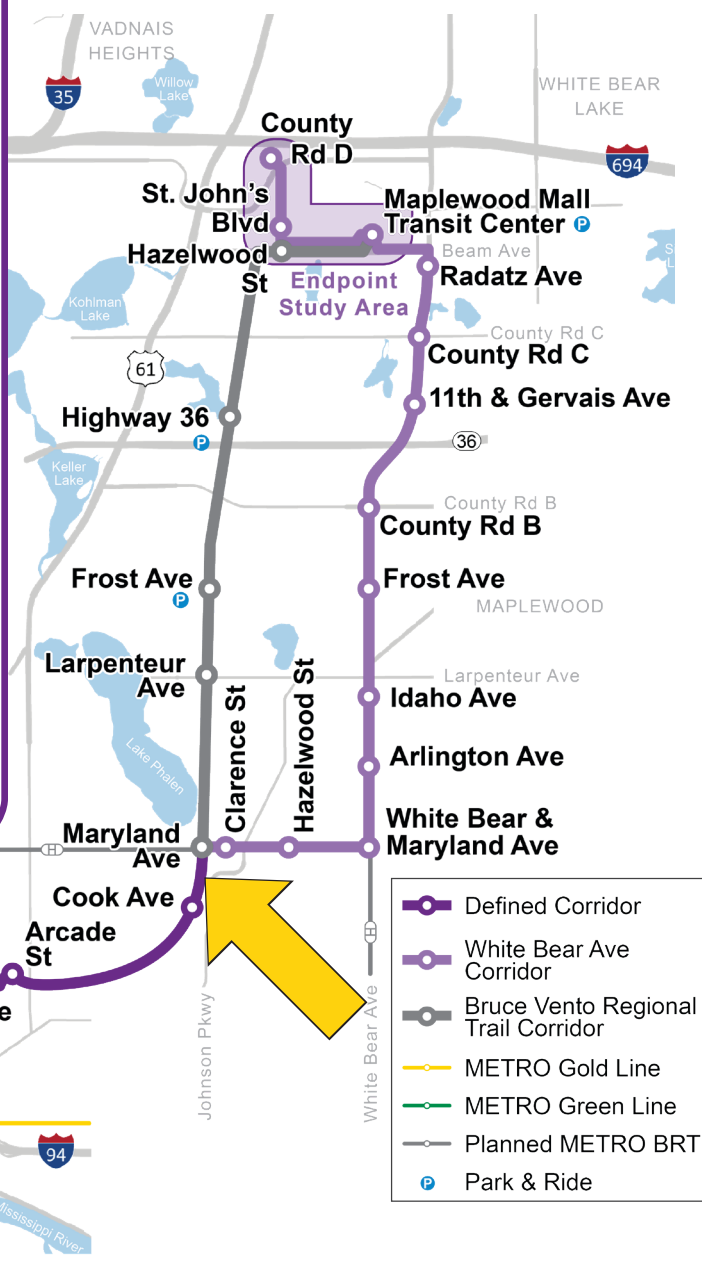
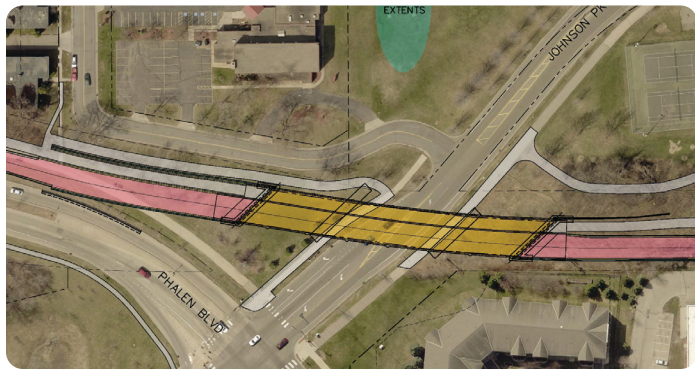
**BRT တာ်ကျါအလွာ်လါလုး မှါမနုာ်လဲာ်**

တာ်ကျါအလွာ်လါလုး မှါတာ်ဟ်ပနီာ် သါလုာ်ဘးအချ (BRT) အကျါ လာ Ramsey County ပူ လာကဆဲးလိာ်သးဒီး တာ်မလါာ်ထီာ်လုာ်မှါအူကျါ ဒီး BRT တာ်ဖဲတာ် မလါ METRO တာ်မကျါကျဲန့ာ်လါ ကျဲကျါကမအါထီာ် တာ်ဒီး န့ာ်ဘာ်တာ်ဖဲတာ်မတဖာ် တာ်အိာ်တာ်ဆိးလါကျဲ ဒီး တာ်မစါတဖာ် တာ်မဂ့ထီာ် တာ်ပတံသ ကွာ်ကညး ဒီး မှါထီာ်စွာ်တာ်လိာ်ကဝါလါပုာ်ဒီးတာ်ဂဲလိာ်န့ာ်လါ တာ်ကျါအလွာ်လါလုး ကမာ်ဝဲ ဟီာ်ကဝါ BRT ကျဲအဆိကတာ် တဘိ လာကမတာ်လာကျဲဂါခိာ်ထံး အလါဆိကတာ် မုတမာ် ကျဲဘိလါဆိအဆဲးတဖာ် ဟ့ာ်ဘာ်ဝဲ တာ်လဲတာ်ကျါ လာန့ာ်သ့ဒီးချထီာ်န့ာ်ဒီးအလါန့ာ်လါ တာ်တာ်ကျါအပုာ်ဘာ်မှါဘာ်ဒါတဖာ် ယုသ့ာ်ညါ မလါ Maryland ဒီး White Bear ကမာ်ဟီာ်ကဝါတဖာ် လာသါလုာ်ကျဲလာတာ်အကျါကျဲအဂါခိာ်ဖျါတာ်စုးကါ Bruce Vento ဟီာ်ကဝါ လုာ်မှါအူတာ်လဲကျဲ န့ာ် လါ ပုာ်ဆာ်တာ်တာ်ကျဲတဖာ် ကဆာ်တာ်ဝဲလါ မှါ တာ်ကျါအလွာ်လါလုး ကလဲန့ာ် White Bear Ave Corridor လာ တာ်ယါထီာ် 2024 ဓါန့ာ်လါ

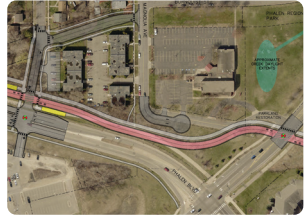
**JOHNSON PARKWAY တာ်ခါကျဲအတာ်ယုထာ်တဖာ်**

တာ်တာ်ကျဲအပုာ်ဘာ်မှါဘာ်ဒါတဖာ် လာအခဲအံာ် ကွာ်ထံဆိကမိာ်ဝဲ Johnson Parkway တာ်ခါကျဲအတာ်ယုထာ်တဖာ် လာ တာ်ကျါအလွာ်လါလုး တာ်တာ်ကျဲအဂါ လာ White Bear Ave Corridor ပူန့ာ်လါ

တာ်ကွာ်ဂါလါအပုာ်ကွာ် ရဲာ်ကျဲဟ်လါသးလါန့ာ် 2017 (ကွာ်တာ်ဂါလါလါ) ပာ်ယုာ် ဒီး တါတဘိလါခါကျဲ Johnson Parkway လဲဆူ Bruce Vento လုာ်မှါအူကျဲ န့ာ်လါ ဒဲလဲာ်ပုာ်ဘာ်မှါဘာ်ဒါတဖာ် လာအခဲအံာ်ကွာ်ထံဆိကမိာ် ကျဲလာအဂါတဖာ် ခိဖျါလာ တာ်မစုာ်လါတာ်လဲတာ်ကျဲအဆါကတာ် ဖဲ တာ်ကျါအလွာ်လါလုး လဲ သယဲကျဲ Maryland Avenue ဒီဘိ လာ White Bear Avenue Corridor ပူ အယိန့ာ်လါ

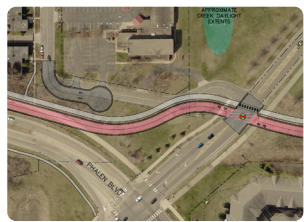


ပကွာ်လါဘာ် ပုာ်တဝါအတာ် ထံာ်ဟ်ဖျါတဖာ် ဘာ်သးတာ် ယုထာ် 3 ထံာ် လာကဆာ်တာ် စါ တာ်ကျါအလွာ်လါလုး ကခါ ကာ်ဘာ် Johnson Parkway ဒဲ လဲာ်န့ာ်လါ



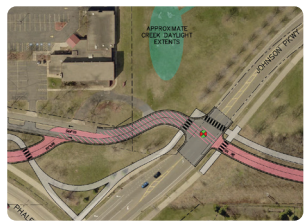
**တာ်မလံာ်ထီာ် Cook Ave အတာ်ယုထာ်**

- ဟ့ာ်ကျဲဆဲးလါလါဆူ Johnson Pkwy လါပုဒါးလုာ်မုာ်အူတဖာ်အဂီာ်
- ဟ့ာ်သိလုာ်ဘါးတာ်လဲကျဲအဆါကတီာ်လါအချဲဒါးန့ာ်န့ာ်သ့
- ဟ့ာ်သိလုာ်တာ်လံာ်ထီာ်လုာ်လါပုဒါးဒါးတာ်လါဘာ်ယုာ် ဆူ Hmong Village ဒါး Magnolia တာ်လါတဖာ် လါအိာ်ဒါး သိလုာ်တာ်လဲတာ်ကျဲအမုာ်အူတာ်ပနီာ်
- ဆီတလဲ တာ်န့ာ်ကါဘာ်ဆူလါဘူးခိာ်ယုာ် ဒါဖျါတာ်မလံာ်ထီာ် Cook Ave န့ာ်လါ
- ဆီတလဲ 1267 Cook Ave ဟံာ်ဒါးဖျါာ် အတာ်ဟံာ်သိလုာ်အလါ
- မါအါထီာ် သိလုာ်တာ်လဲတာ်ကျဲအမုာ်အူတာ်ပနီာ် အသီ 2 တါလါတာ်လါပု
- Cook Avenue သန့ ကသုးကွံာ်အလါဆူကလံာ်ထံး ဒါအတာ်လါတာ်ကျဲလါရဲာ်ကျဲဟံာ်လါဝဲ ဆူ ကျဲစါခါကံာ် လုာ်ဆဲး ဖဲ Cook Ave န့ာ်လါ



**ပံးကွံာ် Magnolia Access တာ်ယုထာ်**

- ထုးကွံာ်ကျဲဟးထီာ်လါတာ်န့ာ်လါကျဲစါာ် လါ Magnolia Ave ဒါး Johnson Pkwy အဘာ်စါာ်
- သုးကွံာ်သိလုာ်တာ်လဲကျဲဆူ Burnquist St ဒါး Duluth St လါလါဘူးခိာ် ယုာ်န့ာ်ကါအဂီာ်
- ဟ့ာ် သိလုာ်တာ်ကျဲအဆါကတီာ် လါအချဲ လါတာ်န့ာ်န့ာ်သ့ဒိာ်ကတါာ်
- ဟ့ာ် သိလုာ်တာ်လဲတာ်ကျဲအမုာ်အူတာ်ပနီာ် အသီတခါလါဟီာ်ကတီာ်ပု ထဲ ဒါာ်လါ ကျဲခါကံာ် သိလုာ်ဘါး ဒါး လုာ်မုာ်အူအဂီာ်



**Magnolia Access တာ်ယုထာ်လါဘာ်တာ်ဘျီဘာ်ဆီတလဲ**

- မါအါထီာ် တာ်လါလါပုလုာ်ထီာ်လုာ်လါအါအလါအနီာ်ဂါ လါ ထီရီသိလုာ်တာ်လဲတာ်ကျဲ တာ်ခါကျဲတဖာ် ဒါး သိလုာ်တဖာ်အဂီာ်
- ကျဲဟးထီာ်န့ာ်လါ Magnolia Ave ဒါး Johnson Pkwy အဘာ်စါာ်န့ာ်ဘာ်တာ်ဟံးဃာ်ဂါကျဲပဲန့ာ်လါ န့ာ်ကါလါခိာ်ယုာ် မ့တမ့ာ် တာ်ဆီတလဲ သိလုာ်ကျဲ တအိာ်ဘာ်န့ာ်လါ
- ဟ့ာ် သိလုာ်တာ်လဲကျဲ လါကယီကတါာ် လါတာ်န့ာ်န့ာ်စါကတါာ်
- မါအါထီာ် သိလုာ်တာ်လဲတာ်ကျဲအမုာ်အူတာ်ပနီာ် အသီတခါ

**ဟ့ာ်န့ာ်ထံာ်ဟံာ်ဖျါ**

တဲဘာ်ဆီပုတာ်ယုထာ်ကွံာ်ဂါပနီာ်လါ ကျဲခါကံာ် Johnson Parkway လါန့ာ်ထံာ်ဘာ်အါ ဖဲလါယု 28 သီ-

- မါဘာ် တာ်ယုသ့ာ်ညါတာ်ဂါလါဟံာ်ယဲဖီခိာ်တခါ  
[surveymonkey.com/r/ZVSJGLB](https://surveymonkey.com/r/ZVSJGLB)
- န့ာ်လါပုာ်ဃာ်သကါး ပုတတါကိာ်ထံာ်ခါဖီ လါတာ်ရဲလါာ်မုာ်လါာ် ဖဲ မုာ်လုာ်လါ လါယု 27 သီ စးထီာ် ဟါ 6-8 န့ာ်ရံာ် ဖဲ Elim Church အတာ်ဟံာ်သိလုာ်လါလါတာ်ဖီခိာ် (1275 Magnolia Ln, St Paul, MN 55106)
- ကါးလါတဲစါ မ့တမ့ာ် ဆုာ်ပုလါပရါ ဖဲ **612-618-0495** or [colin.owens@metrotransit.org](mailto:colin.owens@metrotransit.org)

If you are interested in having Purple Line staff come to your neighborhood group, community organization, business, or event, please reach out.

**STAY CONNECTED**



Sign up for email updates:  
[metrotransit.org/purple-line](https://metrotransit.org/purple-line)



Call us:  
612-618-0495



Email us:  
[purpleline@metrotransit.org](mailto:purpleline@metrotransit.org)



Follow us:  
[@PurpleLineBRT](https://www.facebook.com/PurpleLineBRT)



**If you need this information in an alternative format or language, contact:**

Si necesita esta información en un formato o idioma alternativo, póngase en contacto con:  
Yog koj xav tau cov lus no txhais uas lus hmoob lossis xav tau ib tus neeg pab txhais cov lus no rau koj, tiv tauj:

Haddii aad dooneyso in aad macluumaadkan ku hesho siyaabo kale ama afaf kale, la xiriir:  
နမ့ာ်သးအိာ်န့ာ်ဘာ်တာ်စါာ်ကျဲတဖာ်အါလါတာ်ခဲမံအကျဲလါတာ်ကယုထာ်တဖာ်အါအဂီာ်မ့တမ့ာ်ကျဲဆဲးကျဲ

**Colin Owens**  
Community Outreach  
Coordinator  
612-618-0495  
[colin.owens@metrotransit.org](mailto:colin.owens@metrotransit.org)

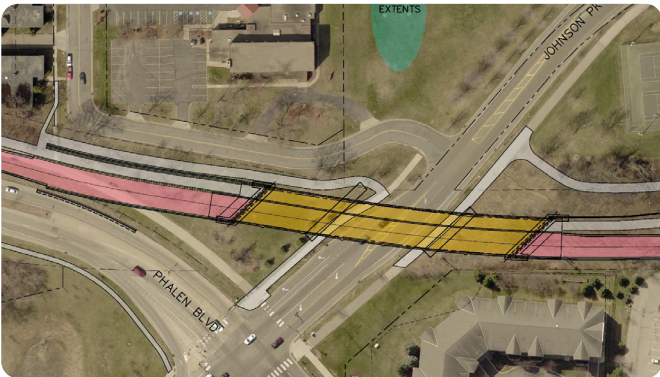
## ¿QUÉ ES PURPLE LINE BRT?

La Purple Line es una línea propuesta de tránsito rápido en autobús (BRT) en el condado de Ramsey que se conectará con el servicio en expansión de tren ligero y BRT del sistema METRO. La nueva línea aumentará la accesibilidad a empleos, viviendas y servicios, mejorando el atractivo y la competitividad del área este del área metropolitana. La Purple Line será una de las primeras líneas de BRT de la región en operar principalmente en carriles exclusivos o semi-exclusivos, lo que permitirá un viaje en tránsito más confiable y rápido. El personal del proyecto está estudiando las avenidas Maryland y White Bear como una ruta alternativa para utilizar el Corredor del Sendero Regional Bruce Vento. La decisión del proyecto determinará si la Purple Line funciona en el Corredor de la avenida White Bear en otoño de 2024.

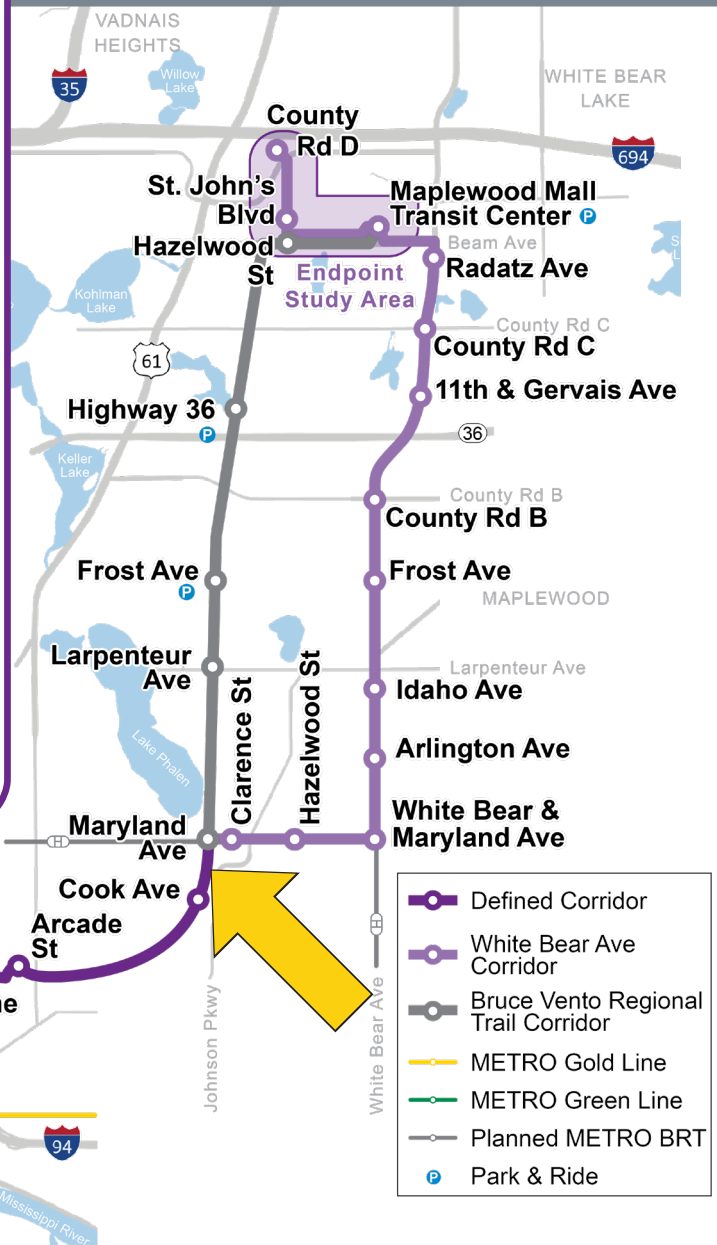
## OPCIONES DE CRUCE DE JOHNSON PARKWAY

El personal del proyecto está reconsiderando actualmente las opciones de diseño de cruce de Johnson Parkway para el proyecto de la Purple Line en el Corredor de la avenida White Bear.

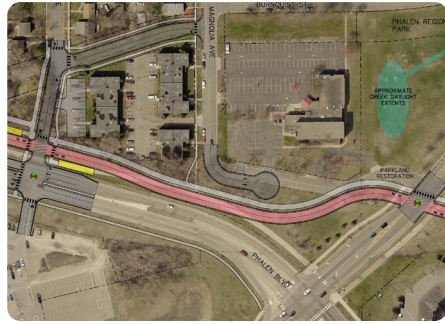
Los planes de diseño anteriores de 2017 (ver imagen abajo) incluían un puente sobre Johnson Parkway para conectar con el Sendero Bruce Vento. Sin embargo, el personal ahora está considerando opciones alternativas debido a la reducción en el ahorro de tiempo de viaje cuando la Purple Line opera a lo largo de la Avenida Maryland en el Corredor de la Avenida White Bear.



Estamos buscando comentarios de la comunidad sobre 3 nuevas opciones para ayudar a determinar cómo la Purple Line cruzará Johnson Pkwy.

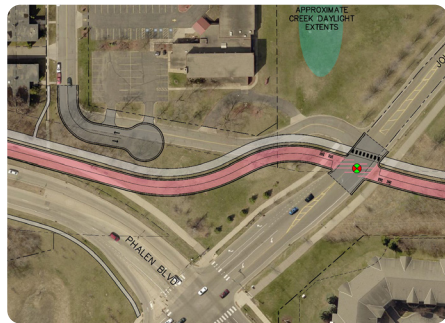






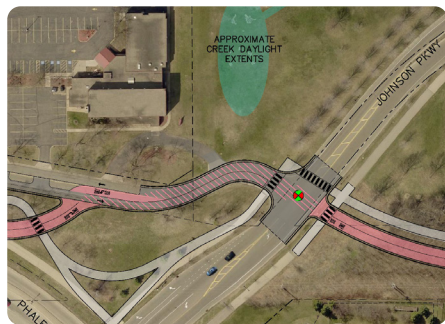
**Opción de Extensión de Cook Avenue**

- Provee una conexión directa a través de Johnson Parkway para los usuarios del sendero.
- Provee tiempos de viaje en autobús confiables.
- Provee movimientos de tráfico más seguros hacia Hmong Village y el área de Magnolia con una nueva señalización de luz de tráfico.
- Cambia el acceso al vecindario extendiendo Cook Avenue.
- Cambia el estacionamiento de los apartamentos en 1267 Cook Avenue.
- Agrega 2 nuevas señales de tráfico en el área.
- La estación de Cook Avenue se cambiaría hacia el norte desde su ubicación planificada hasta la nueva intersección en Cook Avenue.



**Opción de Cierre de Acceso de Magnolia:**

- Elimina el acceso existente entre Magnolia Avenue y Johnson Parkway.
- Desvía el tráfico a Burnquist Street y Duluth Street para el acceso al vecindario.
- Provee la más rápida y fiable ruta para autobús.
- Provee solo una nueva señal de tráfico en el área, solo para cruces de autobús y sendero.



**Opción de Cierre de Acceso de Magnolia**

- Aumenta el número de conflictos entre el tráfico general, peatones y autobuses.
- Se mantiene el acceso existente entre Magnolia Avenue y Johnson Parkway. No hay cambios en el acceso ni en el tráfico del vecindario.
- Provee la más lenta, meno fiable ruta para autobús.
- Añade una nueva señal de tráfico.



**INFORME SU OPINIÓN**

- Díganos qué opción de diseño para cruzar Johnson Parkway le gustaría ver avanzar antes del **28 de junio**:
- Complete una breve encuesta en línea: [surveymonkey.com/r/ZVSJGLB](https://surveymonkey.com/r/ZVSJGLB)
- Únase a nosotros en un evento comunitario de helados el jueves 27 de junio de 6 a 8 p.m. en el Estacionamiento Superior de la Iglesia Elim (1275 Magnolia Ln, St Paul, MN 55106)
- Llámenos o envíenos un correo electrónico al **612-618-0495** o [colin.owens@metrotransit.org](mailto:colin.owens@metrotransit.org)

Si está interesado en que el personal de Purple Line venga a su grupo vecinal, organización comunitaria, negocio o evento, comuníquese con nosotros.

**MANTÉNGASE CONECTADO**

 **Regístrese para recibir actualizaciones por correo electrónico:** [metrotransit.org/purple-line](https://metrotransit.org/purple-line)

 **Llámenos:** 612-618-0495

 **Email us:** [purpleline@metrotransit.org](mailto:purpleline@metrotransit.org)

 **Síguenos:** @PurpleLineBRT  


**If you need this information in an alternative format or language, contact:**

Si necesita esta información en un formato o idioma alternativo, póngase en contacto con:  
Yog koj xav tau cov lus no txhais uas lus hmoob lossis xav tau ib tus neeg pab txhais cov lus no rau koj, tiv tauj:

Haddii aad dooneyso in aad macluumaadkan ku hesho siyaabo kale ama afaf kale, la xiriir:  
နမ့်သးအိၣ်းန့ၣ်ဘၣ်တၢ်စ့ၢ်တၢ်ကျိတဖၣ်အံၤလၢတၢ်ခံၣ်အကျိလၢတၢ်ကယုထၢတံၢ်အံၤအဂီၢ်မ့တမ့ၢ်ကျိၣ်.ဆဲးကျဲ

**Colin Owens**  
Coordinador de Alcance Comunitario  
612-618-0495  
[colin.owens@metrotransit.org](mailto:colin.owens@metrotransit.org)



Purple Line

# JOIN US FOR A COMMUNITY ICE CREAM SOCIAL! JOHNSON PARKWAY OPTIONS — JUNE 2024

Project staff are currently reconsidering the Johnson Parkway crossing design options for the METRO Purple Line Bus Rapid Transit (BRT) project in the White Bear Ave Corridor.

The previous design plans from 2017 included a bridge over Johnson Parkway to connect to the Bruce Vento Trail. However, the staff are now considering 3 alternative options due to the reduced travel time savings when the Purple Line runs along Maryland Avenue in the White Bear Avenue Corridor.

Join us at a community ice cream social to learn more and share your feedback on these 3 options.

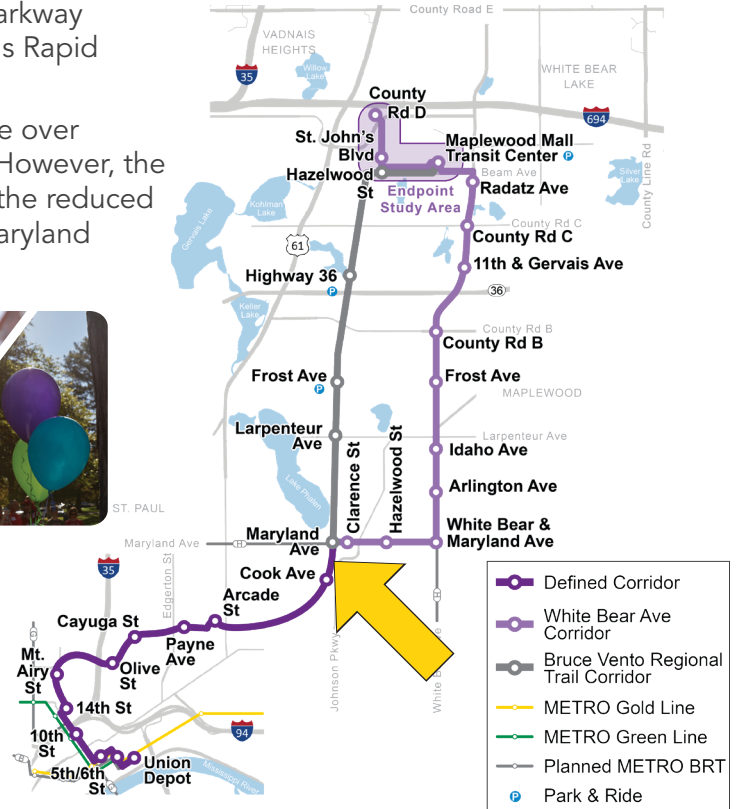


Thursday, June 27 from 6-8 p.m.  
at Elim Church's Upper Parking Lot  
1275 Magnolia Ln, St Paul, MN 55106

Can't make the event?  
Take our online survey here:



Sign up for email updates:  
[metrotransit.org/purple-line](https://metrotransit.org/purple-line)



Purple Line

# JOIN US FOR A COMMUNITY ICE CREAM SOCIAL! JOHNSON PARKWAY OPTIONS — JUNE 2024

Project staff are currently reconsidering the Johnson Parkway crossing design options for the METRO Purple Line Bus Rapid Transit (BRT) project in the White Bear Ave Corridor.

The previous design plans from 2017 included a bridge over Johnson Parkway to connect to the Bruce Vento Trail. However, the staff are now considering 3 alternative options due to the reduced travel time savings when the Purple Line runs along Maryland Avenue in the White Bear Avenue Corridor.

Join us at a community ice cream social to learn more and share your feedback on these 3 options.



Thursday, June 27 from 6-8 p.m.  
at Elim Church's Upper Parking Lot  
1275 Magnolia Ln, St Paul, MN 55106

Can't make the event?  
Take our online survey here:



Sign up for email updates:  
[metrotransit.org/purple-line](https://metrotransit.org/purple-line)



**¡ÚNASE A NOSOTROS PARA UN EVENTO COMUNITARIO CON HELADOS!**  
OPCIONES DE JOHNSON PARKWAY — JUNIO 2024

El personal del proyecto está reconsiderando actualmente las opciones de diseño para el cruce de Johnson Parkway en el proyecto de Bus Rapid Transit (BRT) de Purple Line de METRO en el Corredor de la avenida White Bear. Los planes de diseño previos de 2017 incluían un posible puente sobre Johnson Parkway para conectar con el Bruce Vento Trail. Sin embargo, el personal está considerando ahora 3 opciones alternativas debido al ahorro de tiempo de viaje si la Purple Line circula por las avenida Maryland y White Bear.

**Únase a nosotros en un evento comunitario con helados** para conocer más y compartir sus comentarios sobre estas 3 opciones.

*Jueves, 27 de junio de 6 a 8 p.m. en el estacionamiento superior de la Iglesia Elim 1275 Magnolia Ln, St Paul, MN 55106*



¿No puede asistir al evento?

Complete nuestra encuesta en línea aquí:



Regístrese para recibir actualizaciones por correo electrónico: [metrotransit.org/purple-line](https://metrotransit.org/purple-line)



**¡ÚNASE A NOSOTROS PARA UN EVENTO COMUNITARIO CON HELADOS!**  
OPCIONES DE JOHNSON PARKWAY — JUNIO 2024

El personal del proyecto está reconsiderando actualmente las opciones de diseño para el cruce de Johnson Parkway en el proyecto de Bus Rapid Transit (BRT) de Purple Line de METRO en el Corredor de la avenida White Bear. Los planes de diseño previos de 2017 incluían un posible puente sobre Johnson Parkway para conectar con el Bruce Vento Trail. Sin embargo, el personal está considerando ahora 3 opciones alternativas debido al ahorro de tiempo de viaje si la Purple Line circula por las avenida Maryland y White Bear.

**Únase a nosotros en un evento comunitario con helados** para conocer más y compartir sus comentarios sobre estas 3 opciones.

*Jueves, 27 de junio de 6 a 8 p.m. en el estacionamiento superior de la Iglesia Elim 1275 Magnolia Ln, St Paul, MN 55106*



¿No puede asistir al evento?

Complete nuestra encuesta en línea aquí:



Regístrese para recibir actualizaciones por correo electrónico: [metrotransit.org/purple-line](https://metrotransit.org/purple-line)





Purple Line

# နာ်လီပာ်သကီးပှၤတၢ်ကိာ်ထံ့ခၢ်ဖီလၢတၢ်ရူလိာ်မုာ်လိာ်

## JOHNSON PARKWAY တၢ်ဃုထၢ – လါယူၤ 2024

ပှၤဘၢ်မူဘၢ်ဒါတဖၣ် လၢအခဲအံၤကွၢ်ထံဆိကမိာ် ကျဲခိက် Johnson Parkway အကွၢ်ဂီၤအတၢ်ဃုထၢတဖၣ်လၢ METRO တၢ်ကျိၤအလွၢ်လါလုးသိလုာ်အချ့ (BRT) တၢ်တီၢ်ကျဲၤလၢ White Bear Ave Corridor ပှၤန့ၣ်လီၤ

တၢ်ကွၢ်ဂီၤလၢအပူၤကွၢ် ရဲၣ်ကျဲၤဟံၤလီၤသးလၢန့ၣ် 2017 ပာ်ဃုာ်ဒီး တီၤတဘိလၢခိက် Johnson Parkway လဲၤဆူ Bruce Vento လုာ်မ့ၣ်အူကျဲ န့ၣ်လီၤ ဒ်လဲၣ်ဂ့ၢ် ပှၤဘၢ်မူဘၢ်ဒါတဖၣ် လၢအခဲအံၤကွၢ်ထံဆိကမိာ် ကျဲလၢအဂၤ တဖၣ် 3 ဘိ ဝီဖျိလၢ တၢ်မၤစ့ၤ လီၤတၢ်လဲၤတၢ်ကွၢ်အဆၢကတီၢ် ဖဲ တၢ်ကျိၤအလွၢ်လါလုး လဲၤသးပဲၤကျဲ Maryland Avenue ဒီဘိ လၢ White Bear Avenue Corridor ပှၤအသိန့ၣ်လီၤ

နာ်လီပာ်ဃုာ်သကီးတၢ်ဒီးပှၤဖဲ ပှၤတၢ်ကိာ်ထံ့ခၢ်ဖီလၢ တၢ်ရူလိာ်မုာ်လိာ် လၢကသ့ၣ်ညါအါထီၣ်တၢ်ဂ့ၢ်ဒီး ဟံၤဖျါနု န တၢ်ထံၣ်ဟံၤဖျါဘၢ်ဃး တၢ်ဃုထၢ 3 ထံၣ်အံၤတက့ၢ်

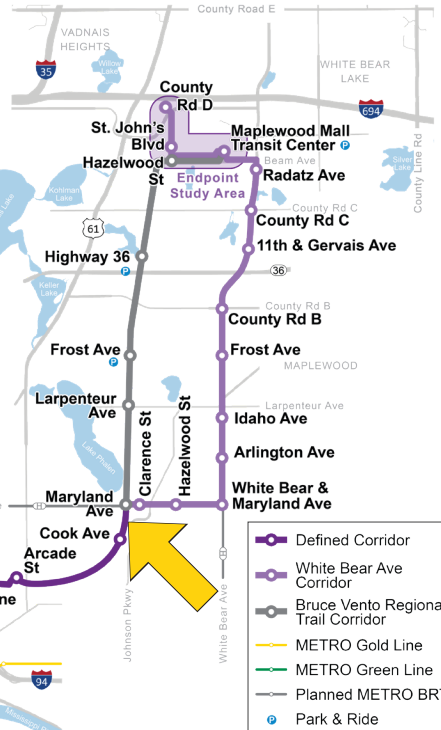


မုာ်လုၤဇီၤ, လါယူၤ 27 စးထီၣ် ဟါ 6-8 န့ၣ်ရံၣ် ဖဲ *Elim Church* အတၢ်ဟံၤသိလုာ်လီၤလၢတၢ်ဖီခိာ် 1275 *Magnolia Ln, St Paul, MN 55106*

လဲၤဘၢ်သကီးတၢ်မူးတသ့ဘၢ်ဒါၤ ကွၢ်သကီးပှၤ တၢ်ဃုသ့ၣ်ညါတၢ်ဂ့ၢ်လၢဟံၤဖဲဖီခိာ်ဖဲအံၤ



ဆဲးလီၤမံၤလၢကန့ၢ်တၢ်ကစီၣ်အသိခိဖျိလိပရၢၤ [metrotransit.org/purple-line](https://metrotransit.org/purple-line)



- Defined Corridor
- White Bear Ave Corridor
- Bruce Vento Regional Trail Corridor
- METRO Gold Line
- METRO Green Line
- Planned METRO BRT
- Park & Ride

**KOOM NROG PEB RAU TES DEJ NUM HAUV ZEJ TSOOM ICE CREAM!  
COV KEV XAIV NTAWM JOHNSON PARKWAY — LUB RAU HLI NTUJ 2024**

Tam sim no cv neeg ua hauj lwm hauv lub khoos kas tab tom rov xav txog cov kev xaiv rau kev tsim qauv cov kev sib tshuam ntawm Johnson Parkway rau lub khoos kas Lub Tsheb Npav Thauj Khoom Ceev Ntawm Txoj Kev Xim Av (Bus Rapid Transit, BRT) Ntawm METRO hauv Txoj Kev Taug Ntawm Txoj Kev White Bear.

Cov phiaj xwm tsim qauv yav dhau los thaum xyoo 2017 suav nrog tus choj hla Johnson Parkway txuas mus rau Bruce Vento Trail. Txawm li cas los xij, uas tam sim no cov neeg ua hauj lwm tab tom txiav txim siab 3 txoj kev xaiv ntawm lwm txoj hauv kev vim tias tau txo qis kev txuag lub sij hawm mus ncig thaum Txoj Kev Xim Ntshav khiav ntawm Txoj Kev Maryland hauv Txoj Kev Taug Ntawm Txoj Kev White Bear.

Koom nrog peb ntawm lub koom txoos ice cream hauv zej zog kom paub ntau ntxiv thiab qhia koj cov tswv yim ntawm 3 txoj kev xaiv no.

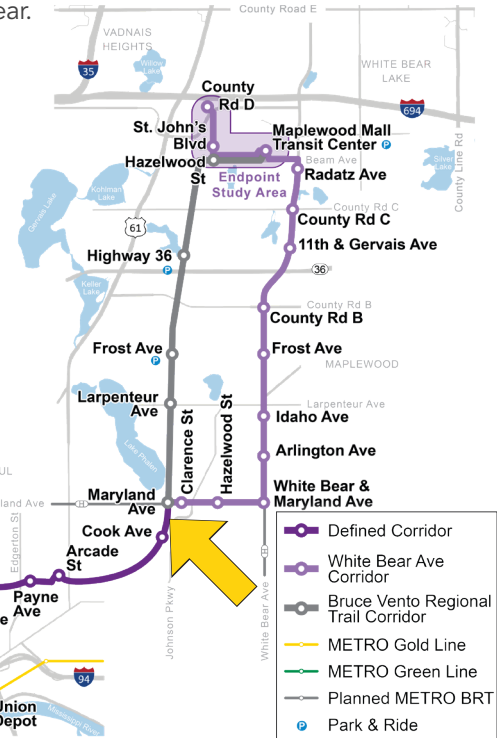
*Hnub Thursday, Lub Rau Hli Ntuj 27 thaum 6-8 teev tsaus ntuj ntawm Qhov Chaw Nres Tsheb Sab Saum Toj Ntawm Elim Church 1275 Magnolia Ln, St Paul, MN 55106*



Puas yog tsis tuaj yeem ua qhov koom txoos? Ua peb qhov kev soj ntsuam hauv oos lais ntawm no:



Sau npe txhawm rau kom tau txais kev hloov kho dua tshiab hauv email: [metrotransit.org/purple-line](https://metrotransit.org/purple-line)





## APPENDIX B. PROJECT NOTICES

## Johnson Parkway Crossing Options

METRO Purple Line BRT project staff are taking additional time to review feedback from the community before making a recommendation to policymakers on how to proceed with the Johnson Parkway Crossing options. This includes maintaining the current bridge design option. No decisions are expected to be made in the coming months.

Additional information, community engagement, and technical evaluation will be conducted after the selection of the best route for Purple Line BRT, which will take place in early October.

Project staff will provide an update on next steps later this fall.



Visit [metrotransit.org/Purple-Line](https://metrotransit.org/Purple-Line)



## Purple Line

121 7th Place E, Suite 102  
St. Paul, MN 55101

### STAY CONNECTED!

If you are interested in having Purple Line staff come to your neighborhood groups, community organization, business, or event, please reach out.

#### SIGN UP FOR EMAIL UPDATES:

[metrotransit.org/Purple-Line](https://metrotransit.org/Purple-Line)

Email us: [purpleline@metrotransit.org](mailto:purpleline@metrotransit.org)

Follow us: [@PurpleLineBRT](https://twitter.com/PurpleLineBRT)

#### QUESTIONS? CONTACT:

**Colin Owens**

Community Outreach Coordinator

612.618.0495

[colin.owens@metrotransit.org](mailto:colin.owens@metrotransit.org)



[metrotransit.org/Purple-Line](https://metrotransit.org/Purple-Line)





## APPENDIX C. PROJECT SURVEY



Take the comment form  
online here:

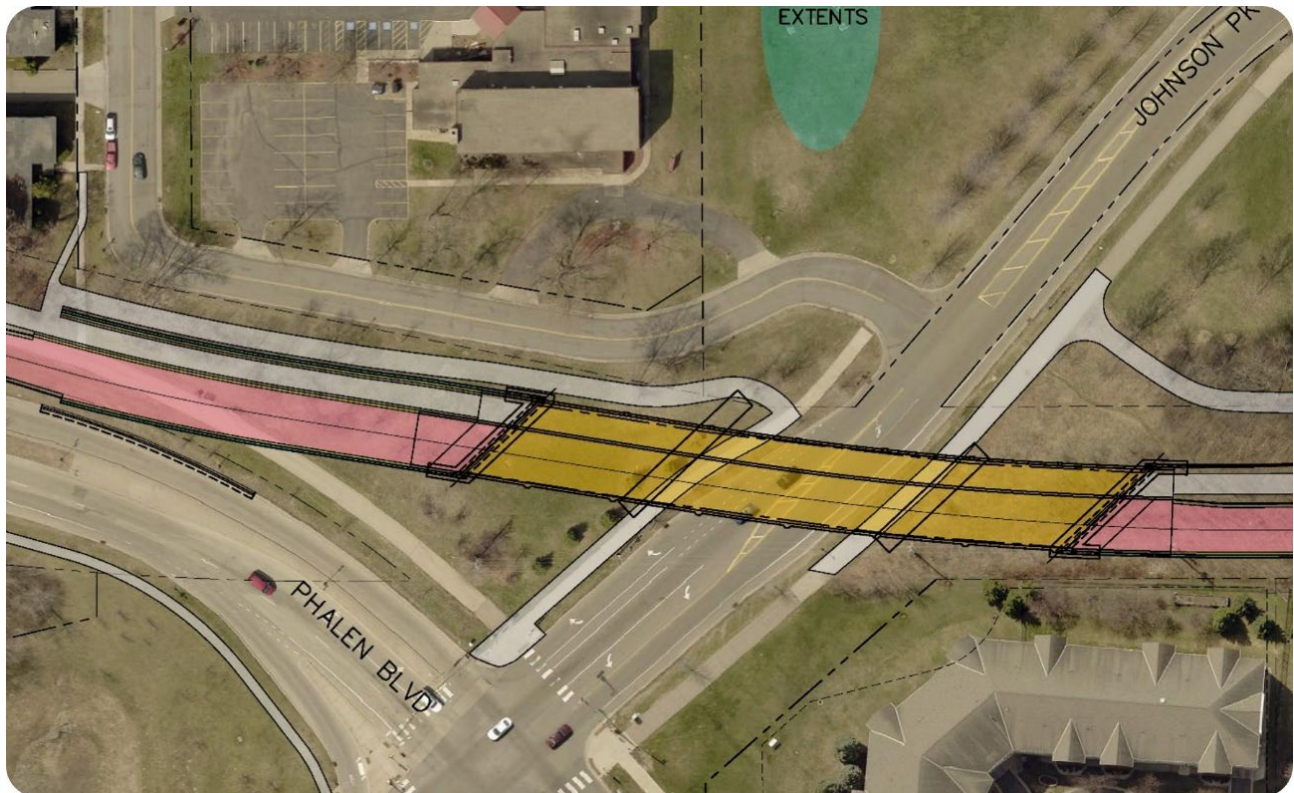


<https://www.surveymonkey.com/r/ZVSJGLB>

## METRO Purple Line – Johnson Parkway Crossing Options

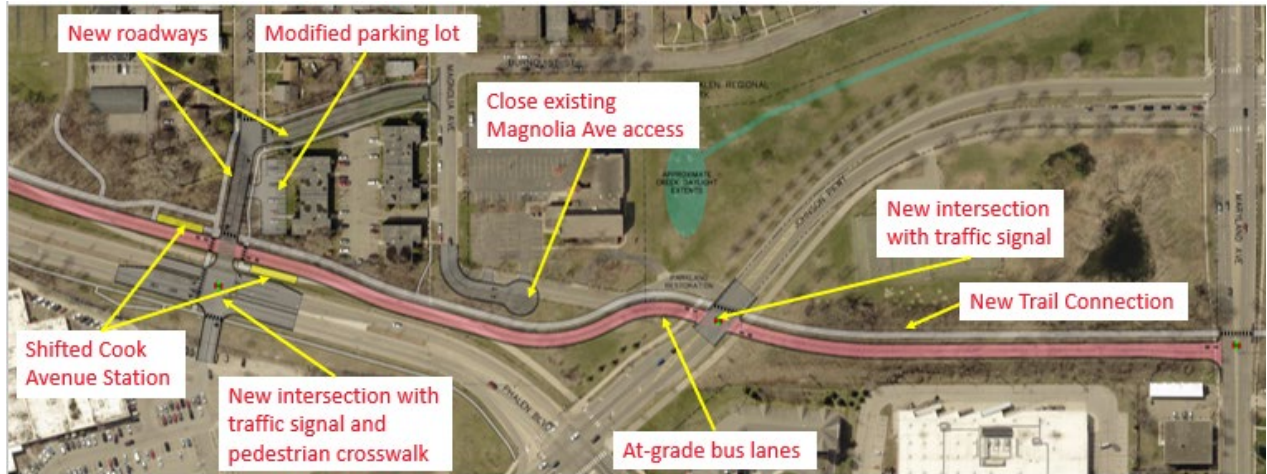
Project staff are currently reconsidering the Johnson Parkway crossing design options for the Purple Line project in the White Bear Ave Corridor. The previous design plans from 2017 included a bridge over Johnson Parkway to connect to the Bruce Vento Trail. However, staff are now considering alternative options due to the reduced travel time savings when the Purple Line runs along Maryland Avenue in the White Bear Avenue Corridor.

Staff are looking for community feedback on 3 new options to help determine how Purple Line will cross Johnson Parkway.



**1. Please review the community considerations on the 3 new options and select your preferred option to help determine how Purple Line cross Johnson Parkway.**

**Cook Avenue Extension Option:**



- Provides direct connection across Johnson Parkway for trail users.
- Provides reliable bus travel times.
- Provides safer traffic movements to Hmong Village and the Magnolia area with the new traffic signal.
- Changes access to the neighborhood by extending Cook Avenue.
- Changes the parking lot of 1267 Cook Avenue Apartments.
- Adds 2 new traffic signals in the area.
- Cook Avenue Station would shift north from its planned location to the new intersection at Cook Avenue.

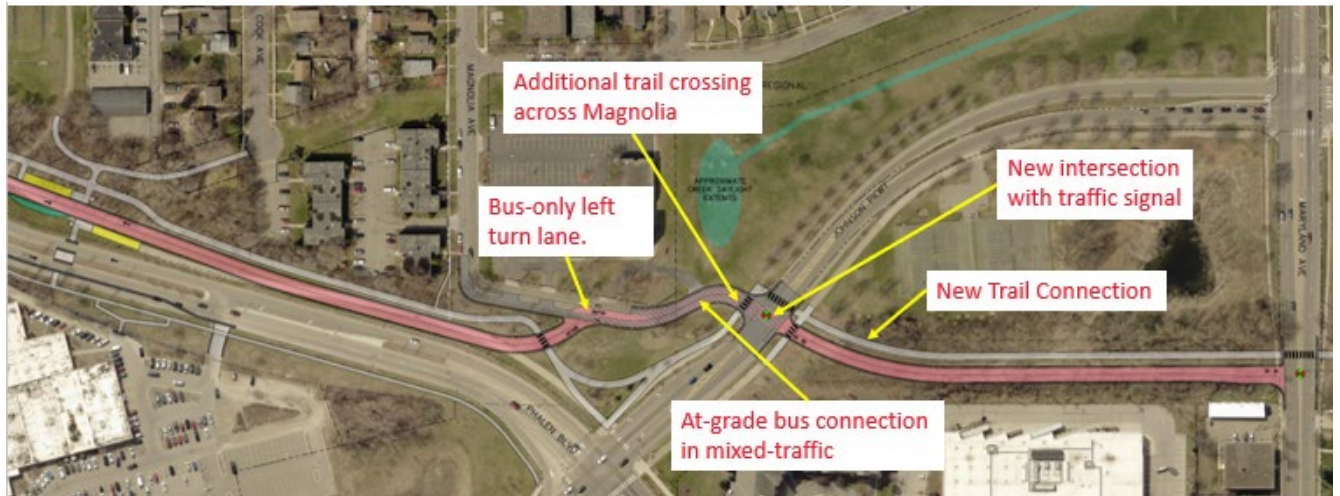
**Close Magnolia Access Option**



- Removes existing access between Magnolia Avenue and Johnson Parkway.
- Shifts traffic to Burnquist Street and Duluth Street for neighborhood access.
- Provides the fastest, most reliable route for buses.

- Provides just one new traffic signal in the area, only for bus and trail crossings.

**Modified Magnolia Access Option**



- Increases number of conflicts between general traffic, pedestrians, and buses.
- Existing access between Magnolia Avenue and Johnson Parkway is maintained. No neighborhood access or traffic changes.
- Provides the slowest, least reliable route for buses.
- Adds one new traffic signal.

**Why did you select this as your preferred crossing option?**

**2. Name (optional)**

First name \_\_\_\_\_

Last name \_\_\_\_\_

**3. Email (optional)**

\_\_\_\_\_



Complete de formulario de comentarios en línea aquí

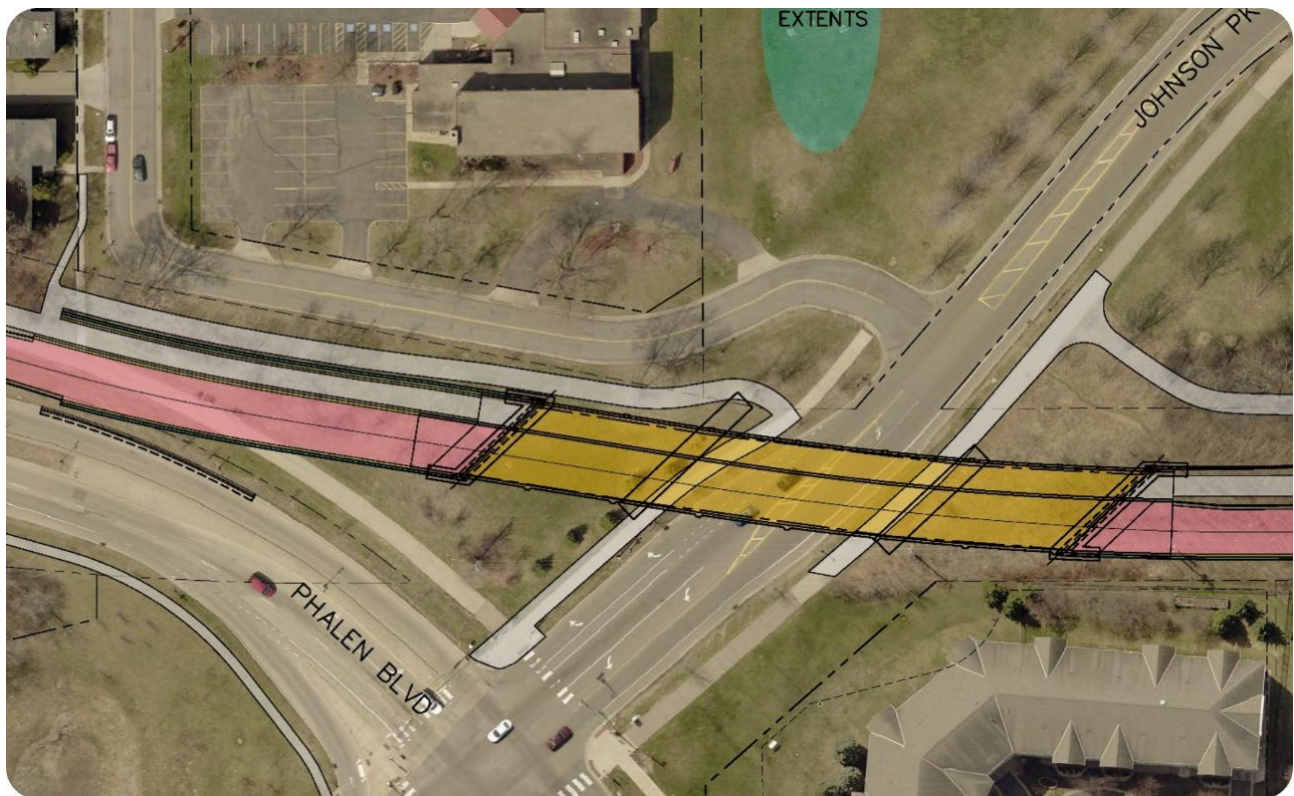


<https://www.surveymonkey.com/r/ZVSJGLB>

## METRO Purple Line – Johnson Parkway Crossing Options

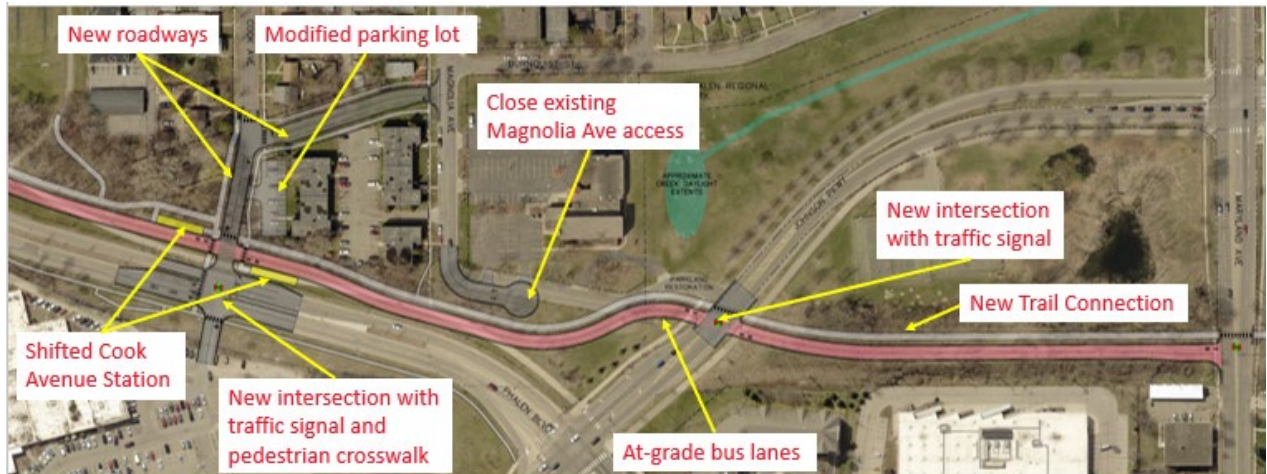
El personal del proyecto está reconsiderando actualmente el diseño del cruce de Johnson Parkway para el proyecto de la Purple Line en el Corredor de White Bear Ave. Los planes de diseño previos de 2017 incluían un puente sobre Johnson Parkway para conectar con el Bruce Vento Trail. Sin embargo, el personal está considerando ahora 3 nuevas opciones debido a la reducción del ahorro de tiempo de viaje si la Purple Line circula por Maryland Avenue en el Corredor de White Bear Avenue.

El personal está buscando comentarios de la comunidad sobre 3 nuevas opciones para ayudar a determinar cómo la Línea Púrpura cruzará Johnson Parkway.



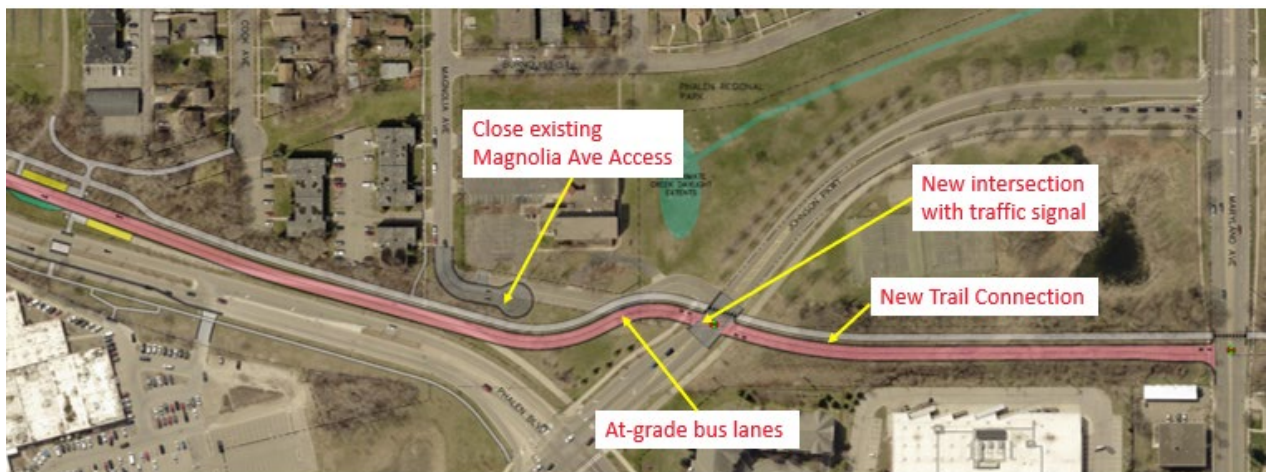
**1. Por favor, revise las consideraciones de la comunidad sobre las 3 nuevas opciones y seleccione su opción preferida para ayudar a determinar cómo la Purple Line cruzará Johnson Parkway.**

**Opción de Extensión Cook Avenue:**



- Provee una conexión directa a través de Johnson Parkway para los usuarios del sendero.
- Provee tiempos de viaje en autobús confiables.
- Provee movimientos de tráfico más seguros hacia Hmong Village y el área de Magnolia con una nueva señalización de luz de tráfico.
- Cambia el acceso al vecindario extendiendo Cook Avenue.
- Cambia el estacionamiento de los apartamentos en 1267 Cook Avenue.
- Agrega 2 nuevas señales de tráfico en el área.
- La estación de Cook Avenue se cambiaría hacia el norte desde su ubicación planificada hasta la nueva intersección en Cook Avenue.

**Opción de Cierre de Acceso de Magnolia:**

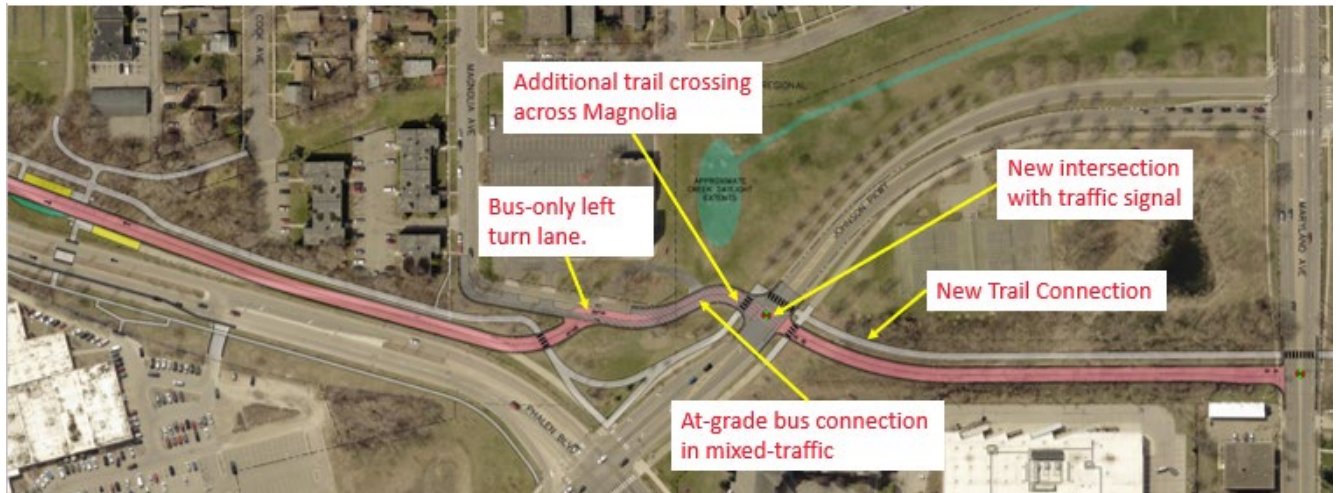


- Elimina el acceso existente entre Magnolia Avenue y Johnson Parkway.
- Desvía el tráfico a Burnquist Street y Duluth Street para el acceso al vecindario.

June 2024

- Provee la más rápida y fiable ruta para autobús.
- Provee solo una nueva señal de tráfico en el área, solo para cruces de autobús y sendero.

**Opción de Acceso de Magnolia:**



- Aumenta el número de conflictos entre el tráfico general, peatones y autobuses.
- Se mantiene el acceso existente entre Magnolia Avenue y Johnson Parkway. No hay cambios en el acceso ni en el tráfico del vecindario.
- Provee la más lenta, menos fiable ruta para autobús.
- Añade una nueva señal de tráfico.

**¿Por qué seleccionó esta opción como su preferida?**

**2. Nombre (opcional)**

Premier nombre \_\_\_\_\_

Apellido \_\_\_\_\_

**3. Correo electrónico (opcional)**

\_\_\_\_\_